

Bowl



Photogrammetry Report.



Component

Image Data

Orientation Report

1. Number of input data	217
2. Registered images count	201/217
3. Points count	116491
4. Total projections	430972
5. Average images per tie point	3.7
6. Maximum reprojection error [pixels]	2.00
7. Median reprojection error [pixels]	0.55
8. Mean reprojection error [pixels]	0.66



Fig. 1 – Composite 4 Views

Model Data

Poly Report

1. High Poly Triangle count	24071754
2. Low Poly Triangle count	75000

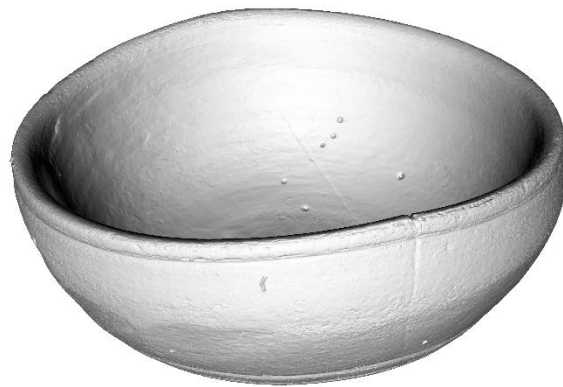


Fig. 2 – High Poly



Fig. 3 – Low Poly



Texturing Report.

Roughness

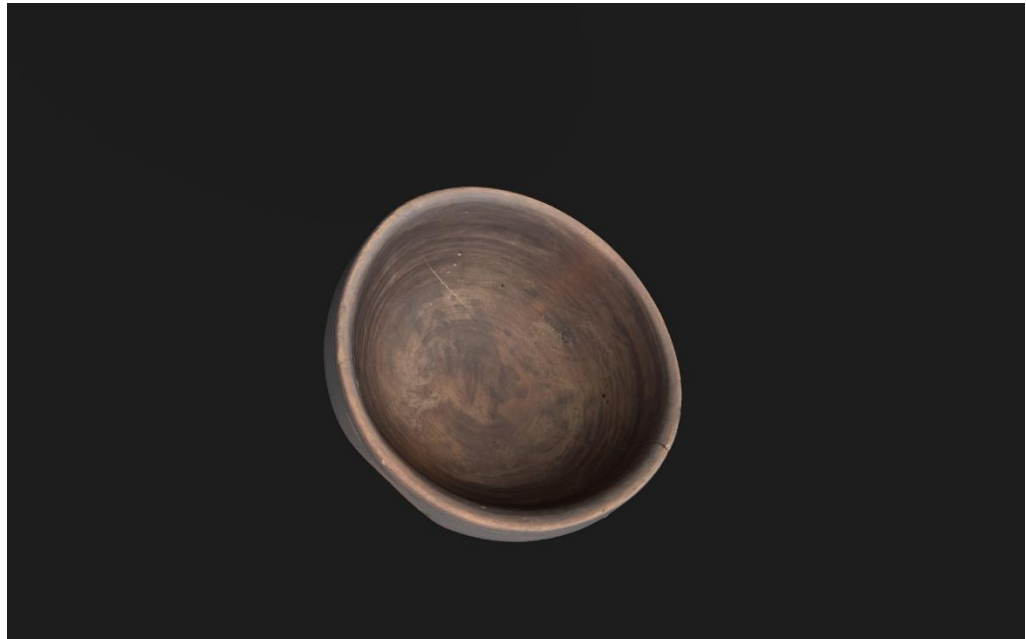


Fig. 4 – Before texturing with SP

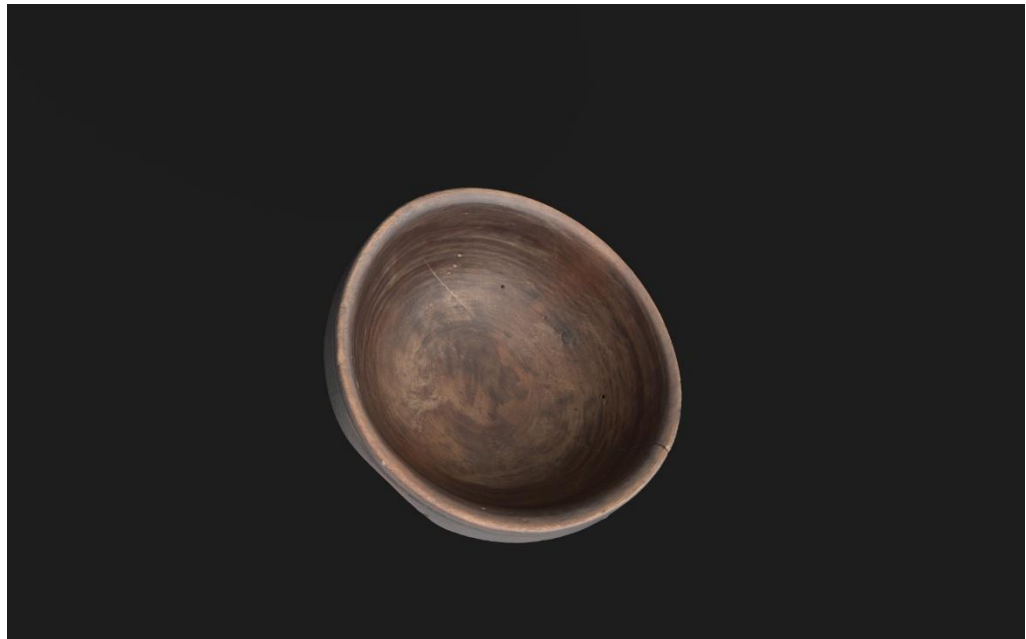


Fig. 5 – After texturing with SP

PBR Textures

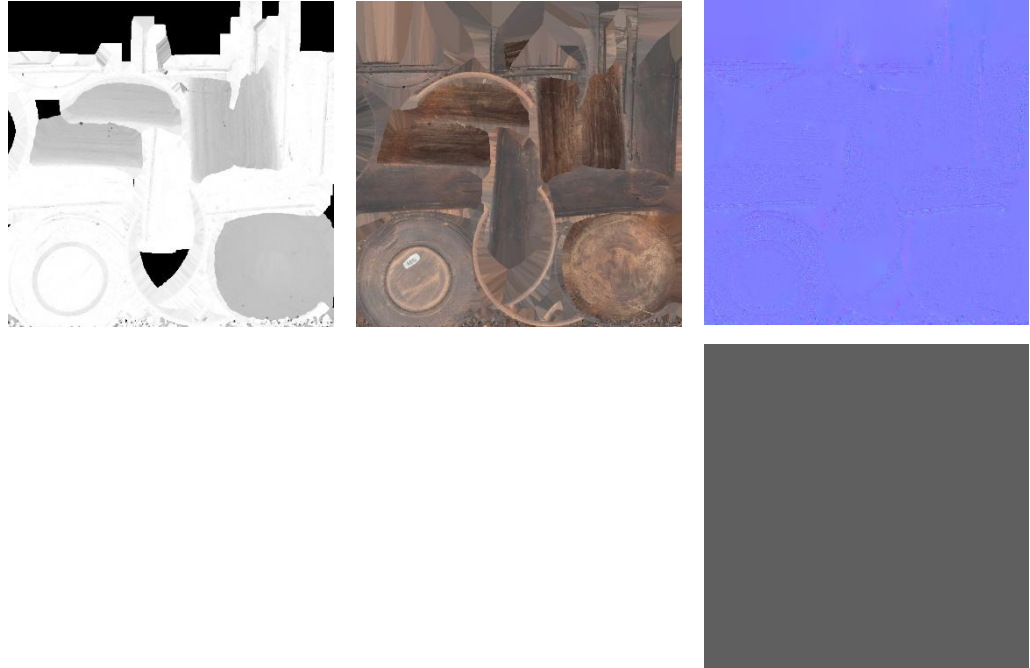


Fig. 6 – AO, Diffuse, Normal (top), and Roughness (bottom)



Blender Report.

Rendering



Fig. 7 – Rendered image of the final model



Fig. 8– Final model rendered in context

Scaling



Fig.9 – Different views of the 3D model showing front, back, sides, bottom, and top perspectives

Data Sheet.

Data

Bowl

Site Muséu del Pueblu d´Asturies / 971

Origin -

Creator -

Technique -

Material Wood

Date s. XIX-XX

Purpose of Production Household ware

Size 7x14x14cm

Description

A traditional wooden bowl designed for multiple uses in an Asturian kitchen-