

Jar



Photogrammetry Report.

Component

Image Data	
Orientation Report	
1. Number of input data	214
2. Registered images count	214/214
3. Points count	429040
4. Total projections	1925323
5. Average images per tie point	4.5
6. Maximum reprojection error [pixels]	2.00
7. Median reprojection error [pixels]	0.39
8. Mean reprojection error [pixels]	0.48



Fig. 1 – Composite 4 Views

Model Data	
Poly Report	
1. High Poly Triangle count	32247546
2. Low Poly Triangle count	74992

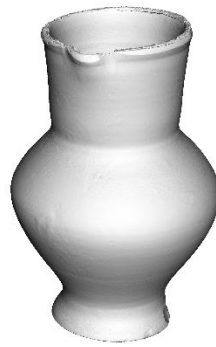


Fig. 2 – High Poly

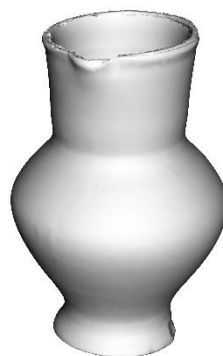


Fig. 3 – Low Poly



Texturing Report.

Roughness and Metallic

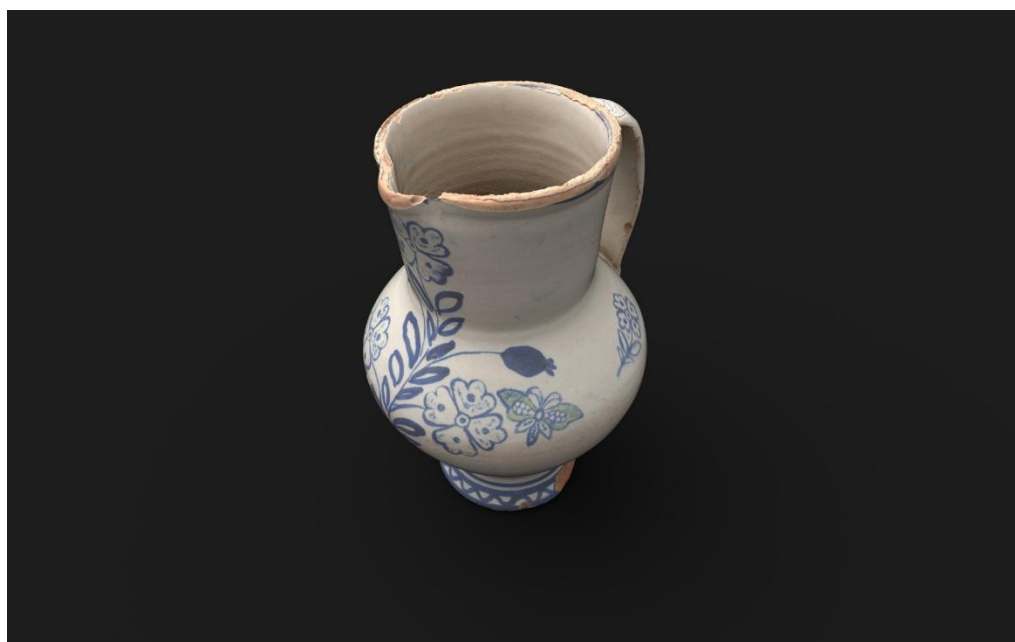


Fig. 4 – Before texturing with SP

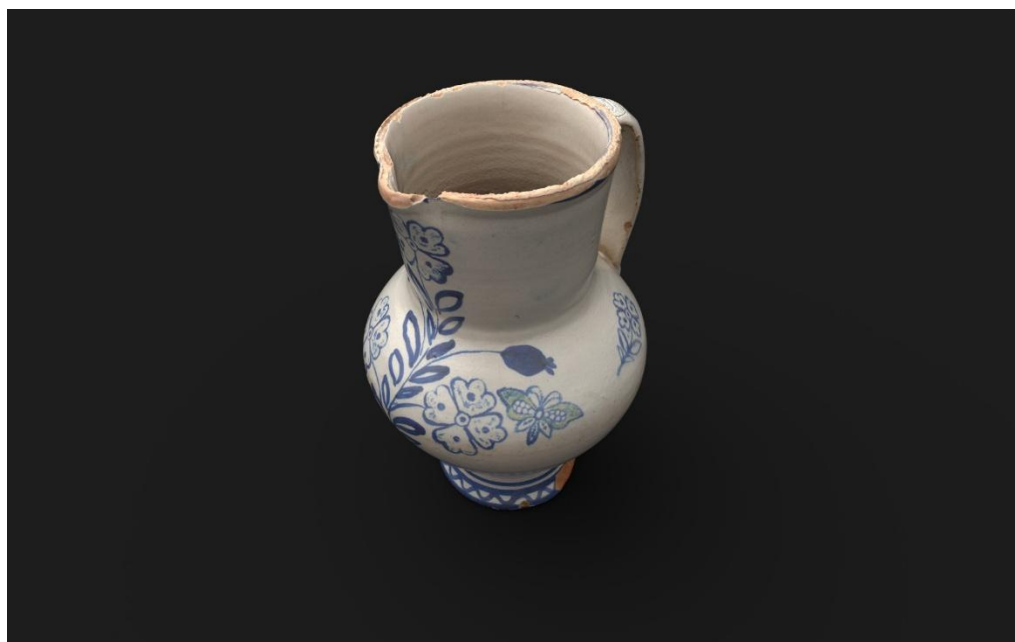


Fig. 5 – After texturing with SP

Texture Correction

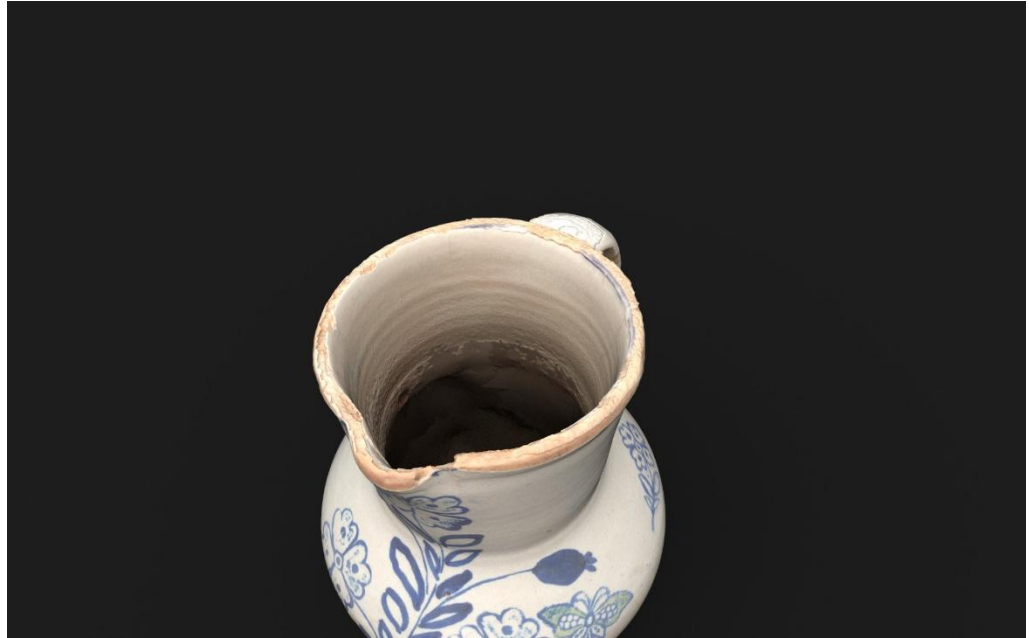


Fig. 6 – Before texturing with SP

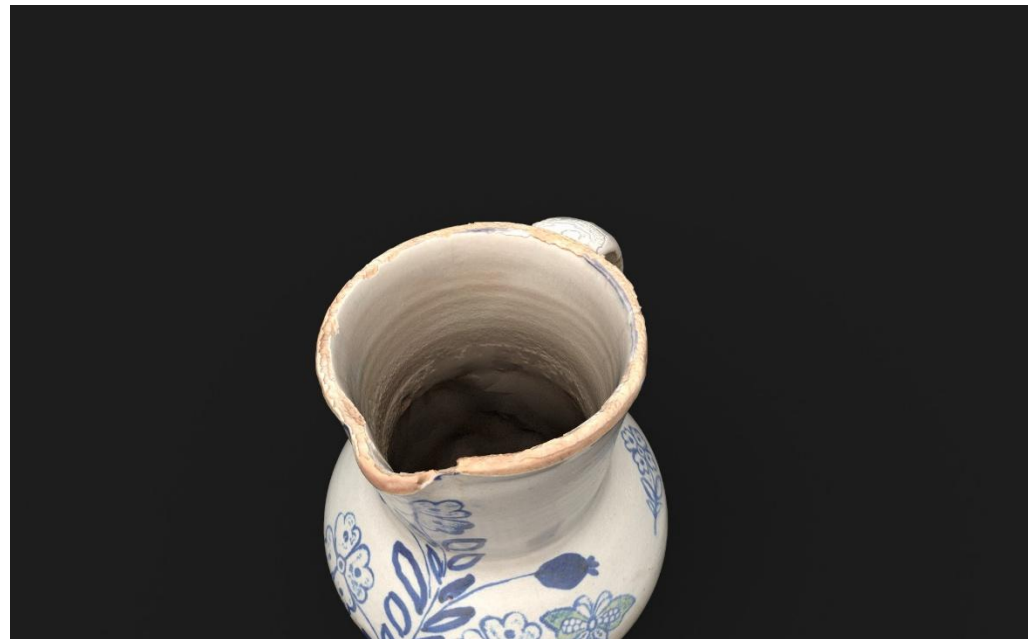


Fig. 7 – After texturing with SP

PBR Textures

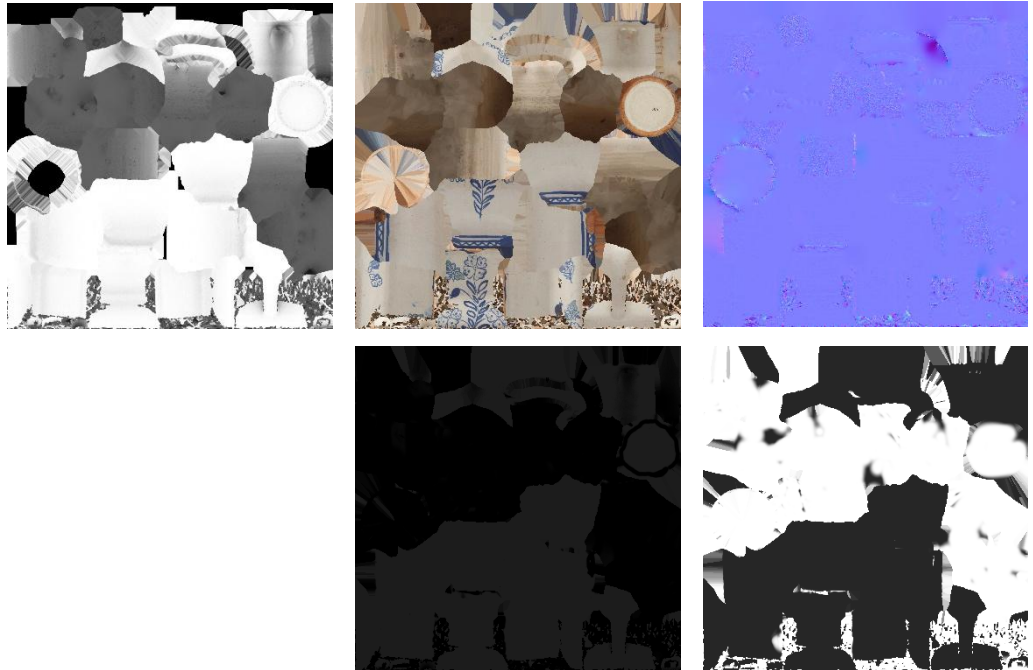


Fig. 8 – AO, Diffuse, Normal (top), Metalness and Roughness (bottom)



Blender Report.

Mesh Restoration

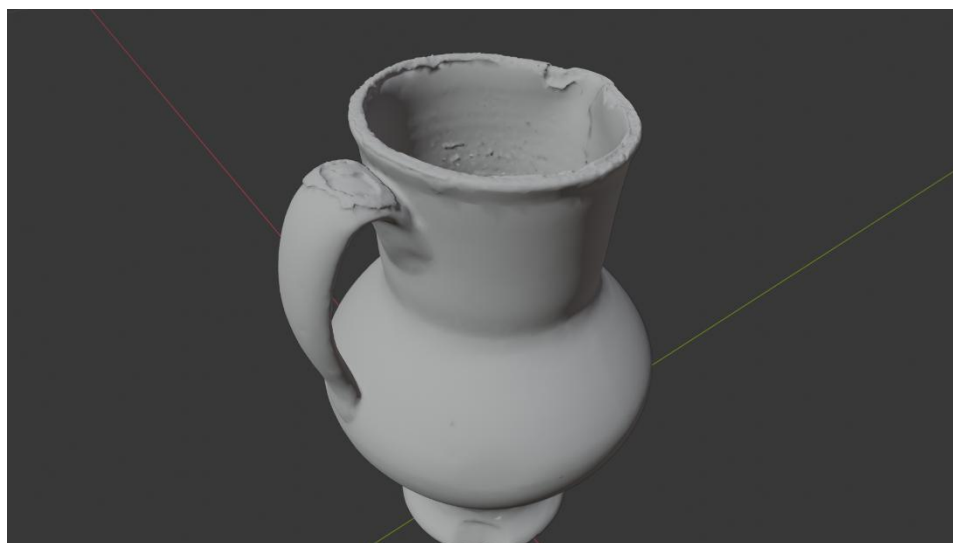


Fig. 9 – Mesh before restoration

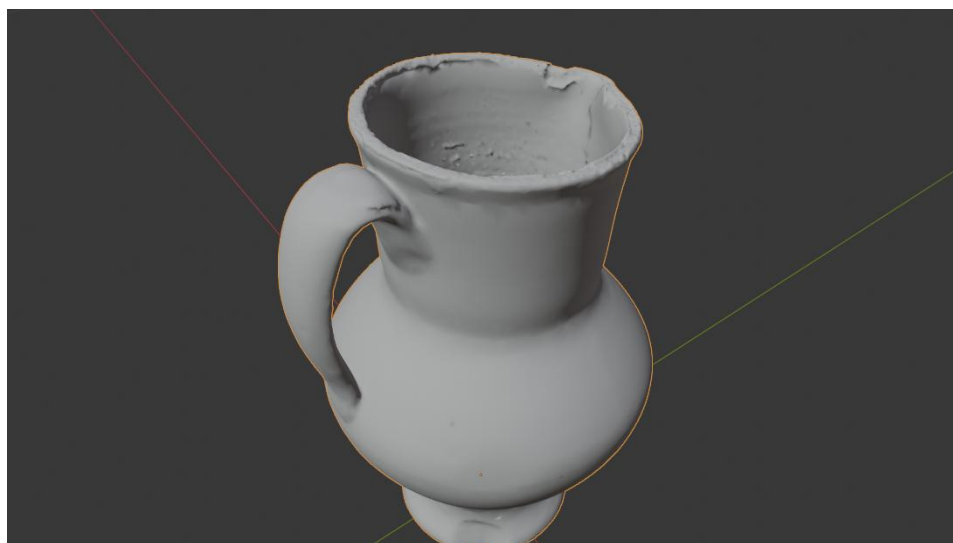


Fig. 10 – Mesh after restoration

Rendering



Fig. 11 – Rendered image of the final model



Fig. 12 – Final model rendered in context

Scaling

This process has been carried out following the size established in the Cer.es, so it may vary slightly.



Fig.13 – Different views of the 3D model showing, front, back, sides, bottom and top perspectives



Data Sheet.

Data

Jar	
Site	Muséu del Pueblu d´Asturies / FM000591
Origin	La Cuesta, Samartino, Siero
Creator	Benjamín Puente Moro “Jamín de la Perucha”
Technique	Wheel-thrown ceramics,
Material	Glazed pottery
Date	1920-30
Purpose of Production	Household ware
Size	22x15x14cm

Description

Glazed pottery painted with vegetal motifs, especially on the front area. This is combined with two butterflies in a blend of green and blue. The decoration also extends to the top, around the mouth of the piece, and around the base, with blue lines that contrast against the white color of the rest of the object. This type of pottery, which originated in the 18th century, was highly successful in the region of Asturias, playing a significant role in the development of a competitive pottery industry in the area.