

Jar



Photogrammetry Report.

Component 1: Body

Image Data		
Orientation Report		
1.	Number of input data	148
2.	Registered images count	144/148
3.	Points count	111744
4.	Total projections	325157
5.	Average images per tie point	2.9
6.	Maximum reprojection error [pixels]	2.00
7.	Median reprojection error [pixels]	0.4
8.	Mean reprojection error [pixels]	0.54

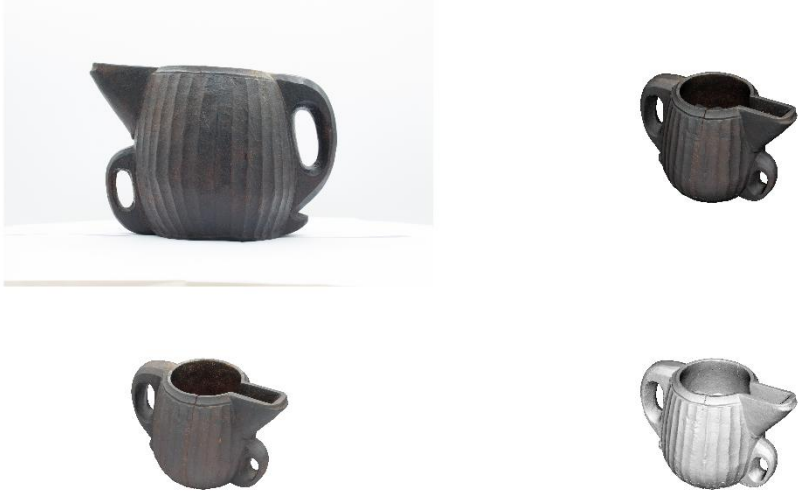


Fig. 1 – Composite 4 Views

Model Data	
Poly Report	
1. High Poly Triangle count	24387948
2. Low Poly Triangle count	74996



Fig. 2 – High Poly



Fig. 3 – Low Poly

Component 2: Lid

Image Data	
Orientation Report	
9. Number of input data	185
10. Registered images count	185/185
11. Points count	300675
12. Total projections	1035249
13. Average images per tie point	3.4
14. Maximum reprojection error [pixels]	2.00
15. Median reprojection error [pixels]	0.37
16. Mean reprojection error [pixels]	0.49



Fig. 4 – Composite 4 Views

Model Data

Poly Report

3.	High Poly Triangle count	14444214
4.	Low Poly Triangle count	74994

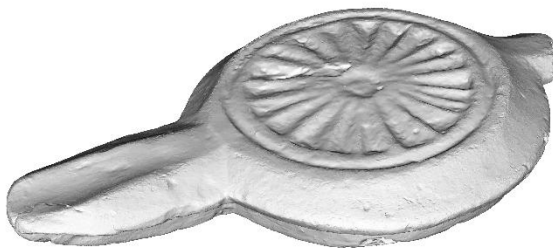


Fig. 5 – High Poly



Fig. 6 – Low Poly





## Texturing Report.

### Roughness and Levels



Fig. 7 – Before texturing with SP



Fig. 8 – After texturing with SP



Fig. 9 – Before texturing with SP



Fig. 10 – After texturing with SP

## Texture Correction



Fig. 11 – Before texturing with SP



Fig. 12 – After texturing with SP



## PBR Textures

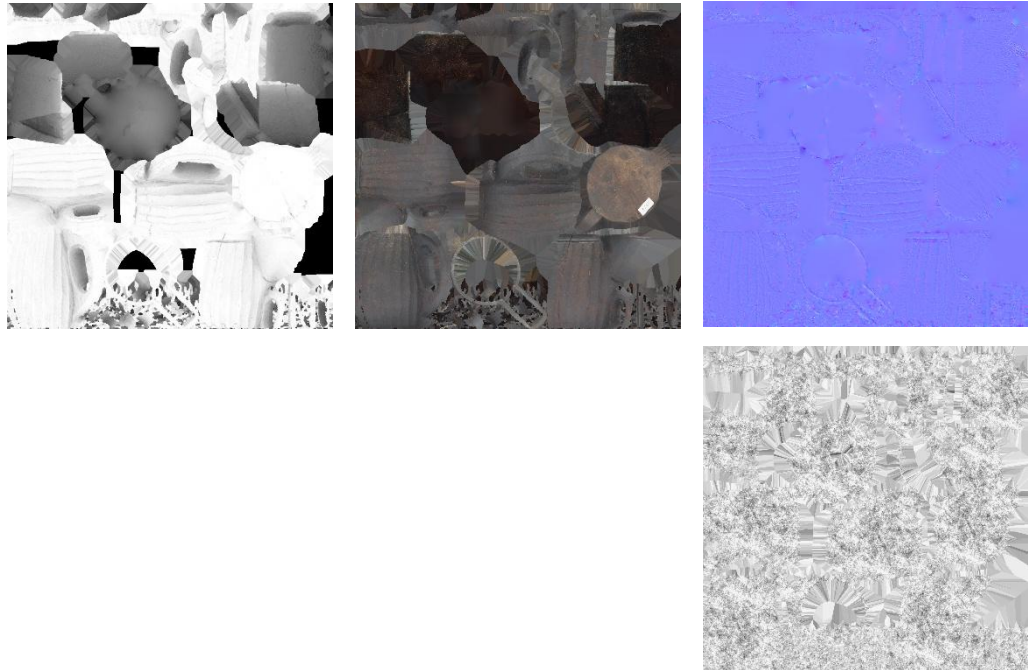


Fig. 3– AO, Diffuse, Normal (top), and Roughness (bottom) from jar

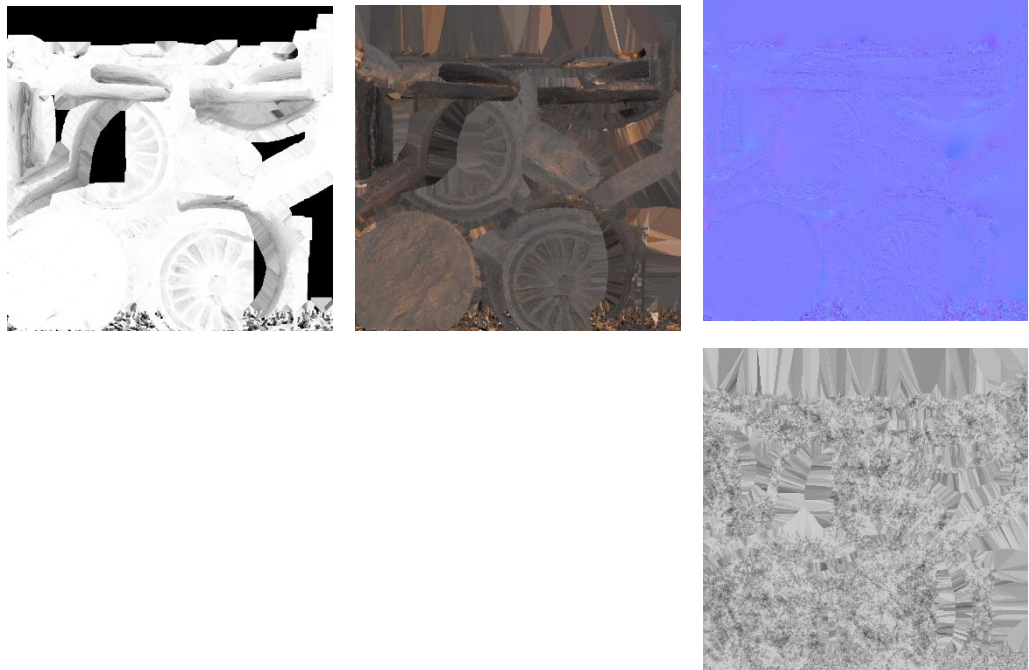


Fig. 3– AO, Diffuse, Normal (top), and Roughness (bottom) from lid



## Blender Report.

### Rendering



Fig. 11 – Rendered image of the final model



Fig. 12 – Final model rendered in context

## Scaling

This process has been carried out following the size established in the Cer.es, so it may vary slightly.



Fig.13 – Different views of the 3D model showing, front, back, sides, bottom and top perspectives





Data Sheet.

Data

Jar	
Site	Muséu del Pueblu d´Asturies / RDM1339
Origin	-
Creator	-
Technique	Wood carving
Material	Wood
Date	Ca. 1850-1900
Purpose of Production	Household ware; Dairy industry
Size	12x17x11cm

Description

Called a Zapica, this jar was used to collect milk in mountainous areas. It is made of carved wood, with most of the decoration concentrated on the lid, where a geometric sun composed of angular shapes can be seen