

Jar



Photogrammetry Report.

Component

Image Data	
Orientation Report	
1. Number of input data	106
2. Registered images count	106/106
3. Points count	153152
4. Total projections	566785
5. Average images per tie point	3.7
6. Maximum reprojection error [pixels]	2.00
7. Median reprojection error [pixels]	0.42
8. Mean reprojection error [pixels]	0.53



Fig. 1 – Composite 4 Views

Model Data	
Poly Report	
1. High Poly Triangle count	35783912
2. Low Poly Triangle count	74988

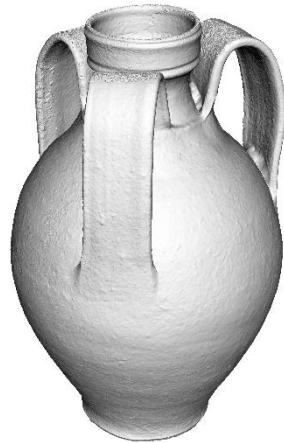


Fig. 2 – High Poly

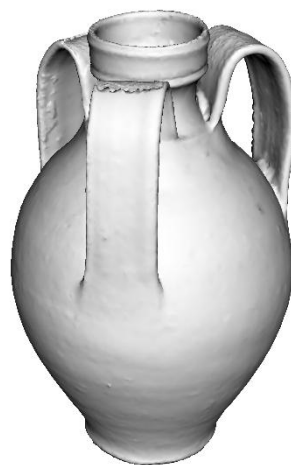


Fig. 3 – Low Poly



Texturing Report.

Roughness and Texture Correction



Fig. 4 – Before texturing with SP



Fig. 5 – After texturing with SP

Normal Correction

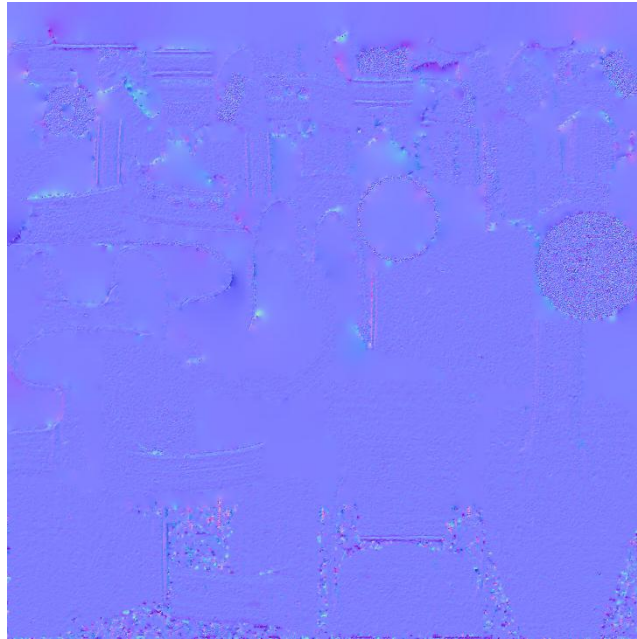


Fig. 6 – Before correcting

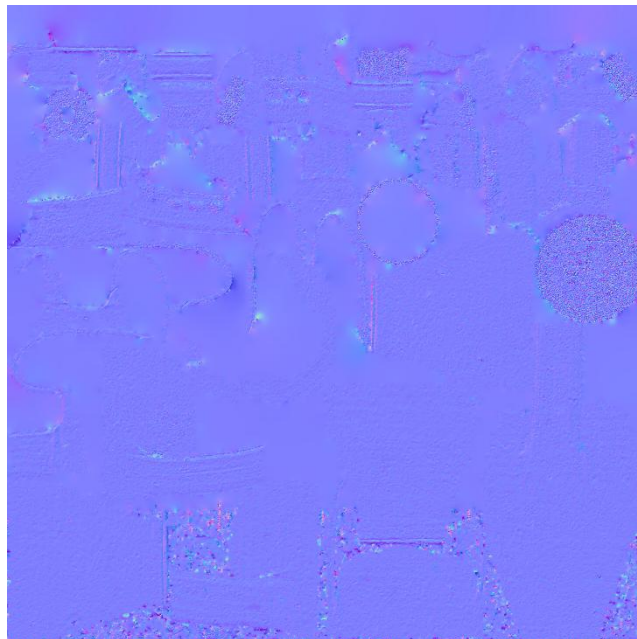


Fig. 7 – After correcting



PBR Textures

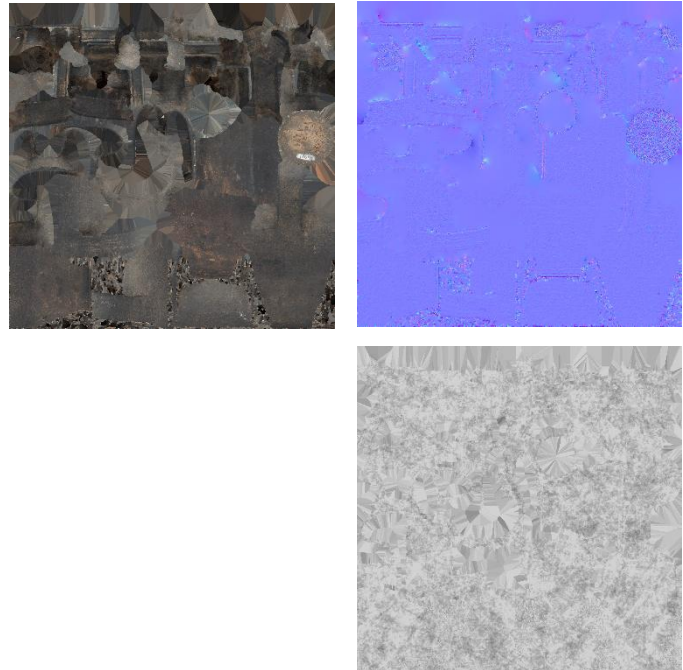


Fig. 8 – Diffuse, Normal (top), and Roughness (bottom)



Blender Report.

Mesh Restoration

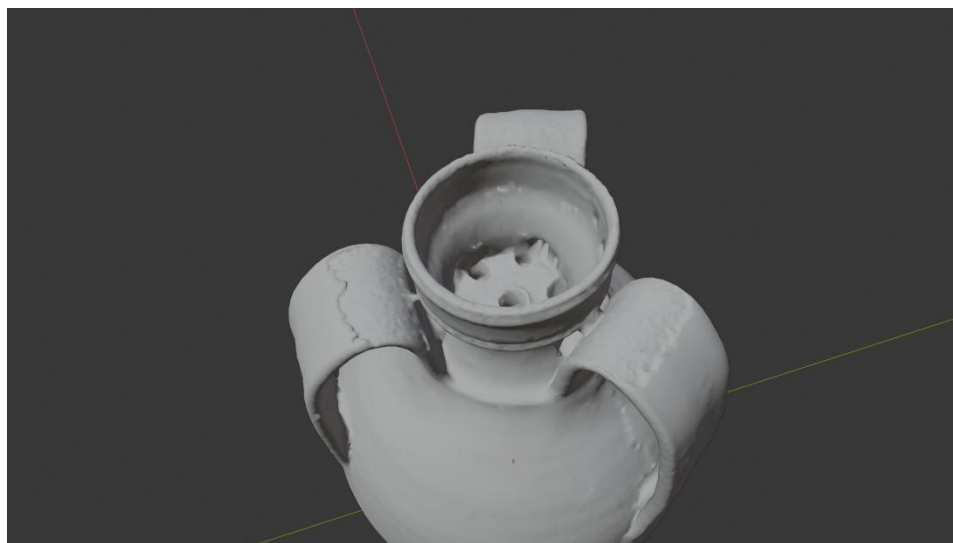


Fig. 9 – Mesh before restoration

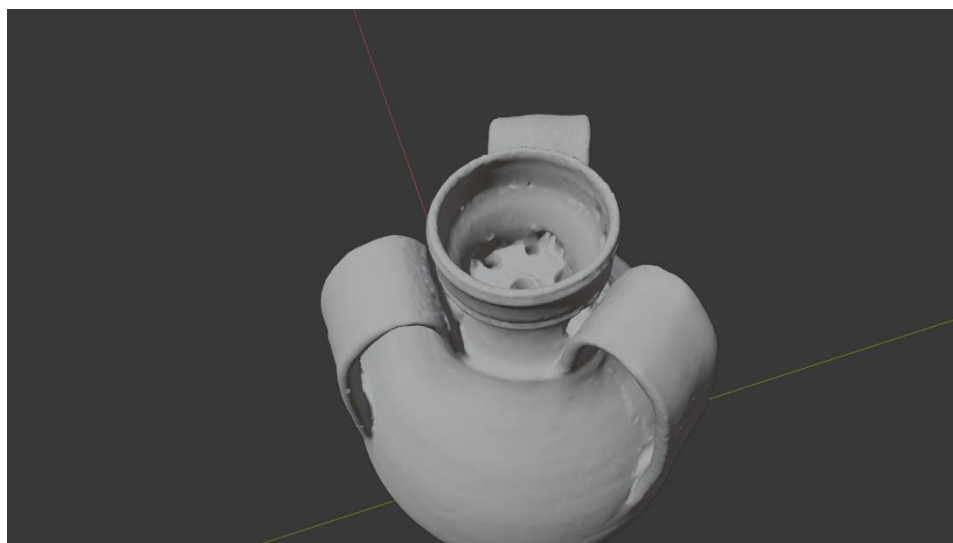


Fig. 10 – Mesh after restoration

Rendering



Fig. 11 – Rendered image of the final model



Fig. 12 – Final model rendered in context

Scaling



Fig.13 – Different views of the 3D model showing front, back, sides, bottom and top perspectives



Data Sheet.

Data

Jar	
Site	Muséu del Pueblu d´Asturies / 12641
Origin	
Creator	
Technique	
Material	Clay
Date	19th-20th
Purpose of Production	Household ware
Size	26x16x16cm

Description

A pottery jar with three handles and perforations in the mouth, functioning as a filter for its contents.