

Bowl



Photogrammetry Report.

Component

Image Data

Orientation Report

1.	Number of input data	117
2.	Registered images count	117 / 117
3.	Points count	170069
4.	Total projections	760916
5.	Average images per tie point	4.5
6.	Maximum reprojection error [pixels]	2.00
7.	Median reprojection error [pixels]	0.49
8.	Mean reprojection error [pixels]	0.61

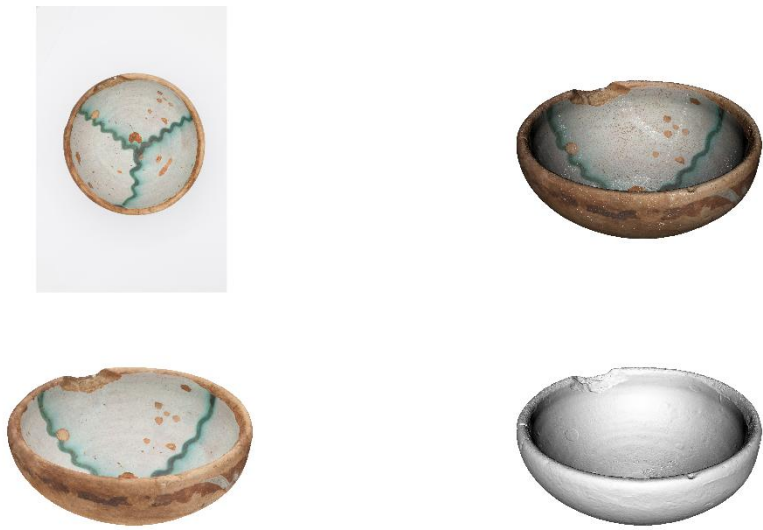


Fig. 1 – Composite 4 Views

Model Data		
Poly Report		
1.	High Poly Triangle count	24003100
2.	Low Poly Triangle count	74980

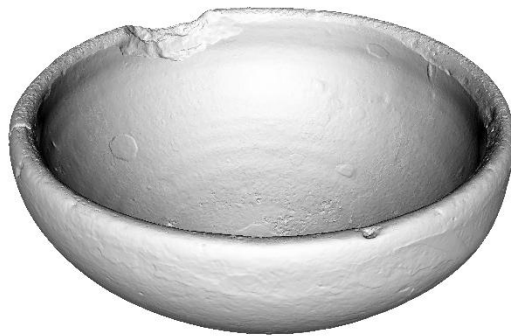


Fig. 2 – High Poly

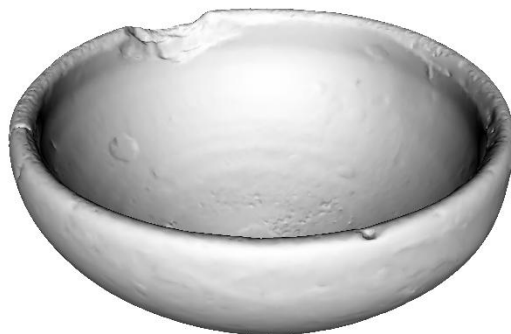


Fig. 3 – Low Poly



## Texturing Report.

### Roughness and Metalness



Fig. 4 – Before texturing with SP



Fig. 5 – After texturing with SPPBR Textures

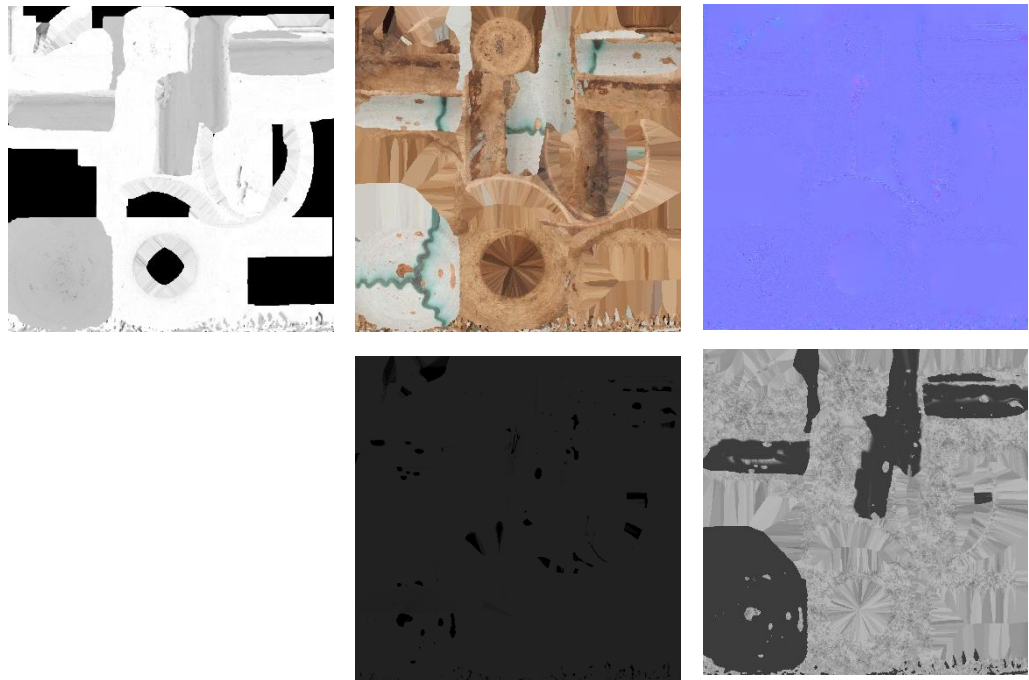


Fig. 6 – AO, Diffuse, Normal (top), Metalness and Roughness (bottom)





## Blender Report.

### Rendering



Fig. 7 – Rendered image of the final model



Fig. 8 – Final model rendered in context

## Scaling

This process has been carried out following the size established in the Cer.es, so it may vary slightly.



Fig. 9 – Different views of the 3D model showing front, back, sides, bottom and top perspectives



Data Sheet.

Data

Bowl / Escudiella	
Site	Muséu del Pueblu d’Asturies / FM007393
Origin	Faro de Arriba
Creator	Alfar de Faro
Technique	Reduction Firing; Glazed Pottery
Material	Glazed pottery
Date	Ca. 1890/1910
Purpose of Production	Household ware
Size	6x14x14cm

Description

Glazed pottery used as part of household ware. Made of pink clay, the interior is coated with a white glaze and decorated with a triskelion motif.