

## Needle



## Photogrammetry Report.

### Component

#### Image Data

#### Orientation Report

1. Number of input data	187
2. Registered images count	106/187
3. Points count	23459
4. Total projections	62530
5. Average images per tie point	2.66
6. Maximum reprojection error [pixels]	2.00
7. Median reprojection error [pixels]	0.33
8. Mean reprojection error [pixels]	0.47



Fig. 1 – Composite 4 Views

## Model Data

### Poly Report

1. High Poly Triangle count	4680682
2. Low Poly Triangle count	74992



Fig. 2 – High Poly



Fig. 3 – Low Poly



## Texturing Report.

### Roughness and Texture Correction



Fig. 4 – Before texturing with SP



Fig. 5 – After texturing with SP

## PBR Textures

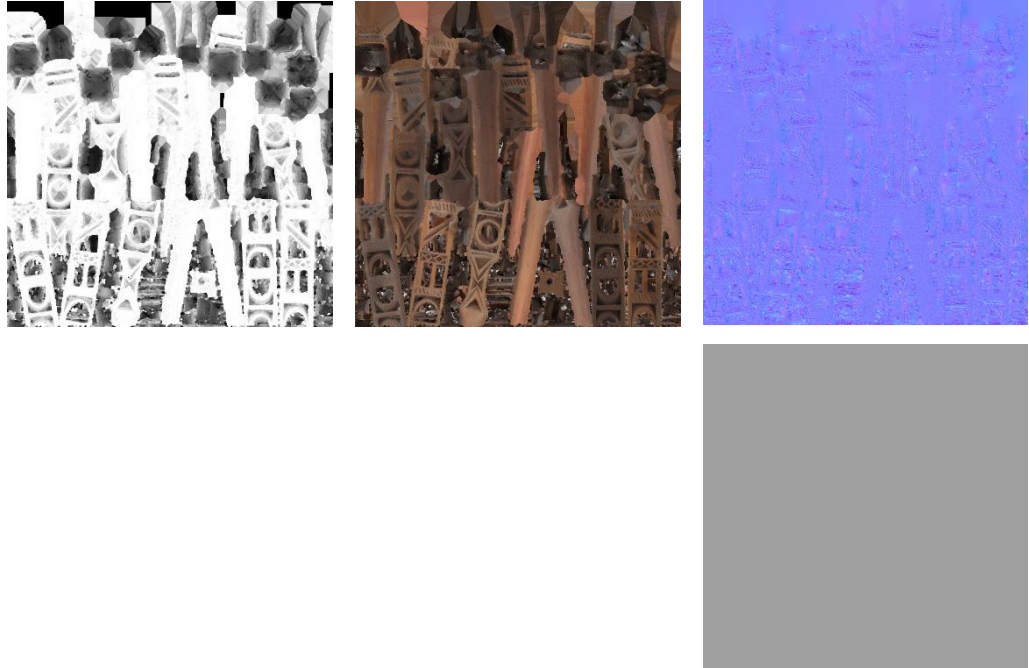


Fig. 6 – AO, Diffuse, Normal (top), and Roughness (bottom)





Blender Report.

## Rendering



Fig. 7 – Rendered image of the final model



Fig. 8– Final model rendered in context

## Scaling



Fig.9 – Different views of the 3D model showing front, back, sides, bottom, and top perspectives

## Data Sheet.

### Data

#### Needle

<b>Site</b>	Muséu del Pueblu d'Asturies / 14031
<b>Origin</b>	-
<b>Creator</b>	-
<b>Technique</b>	-
<b>Material</b>	Wood
<b>Date</b>	19th-20th
<b>Purpose of Production</b>	Textile Crafts
<b>Size</b>	25x2x2cm

### Description

A wooden needle featuring carved geometric motifs, with openings at the top that pierce through the wood, creating an intriguing play of light and shadow.