

Plate



Photogrammetry Report.

Component



Image Data

Orientation Report

1.	Number of input data	212
2.	Registered images count	212 / 212
3.	Points count	196765
4.	Total projections	947550
5.	Average images per tie point	4.8
6.	Maximum reprojection error [pixels]	2.00
7.	Median reprojection error [pixels]	0.63
8.	Mean reprojection error [pixels]	0.95



Fig. 1 – Composite 4 Views

Model Data	
Poly Report	
1. High Poly Triangle count	20768106
2. Low Poly Triangle count	74994



Fig. 2 – High Poly

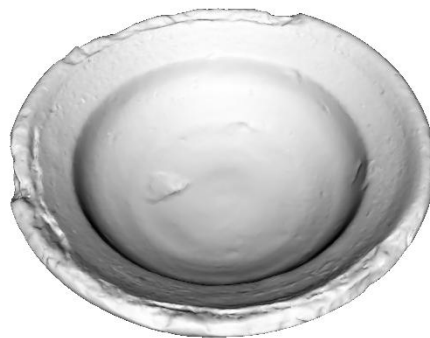


Fig. 3 – Low Poly



Texturing Report.

Roughness and Metalness

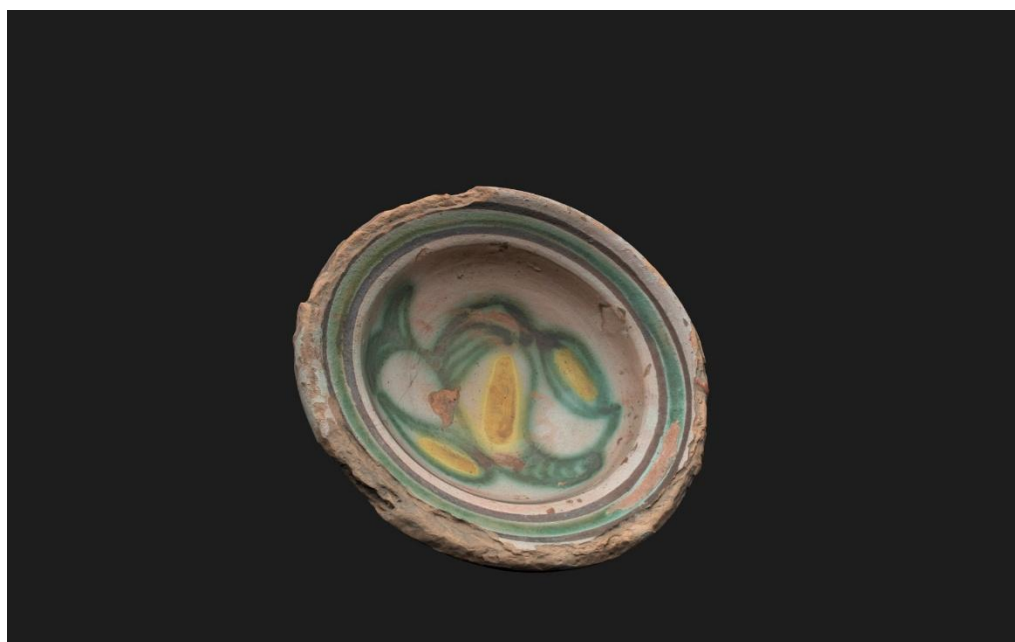


Fig. 4 – Before texturing with SP

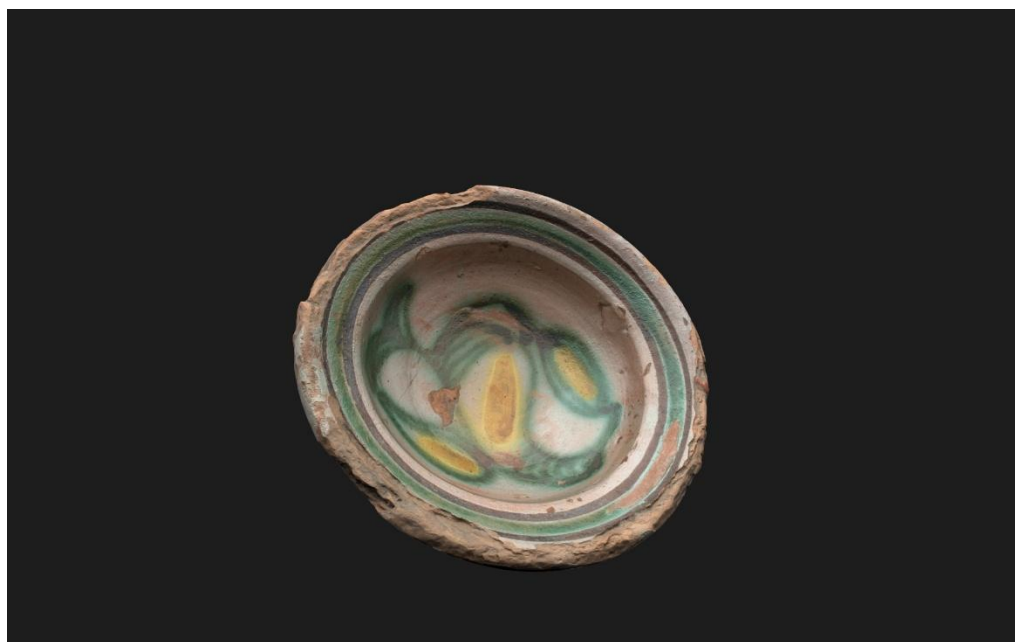


Fig. 5 – After texturing with SPPBR Textures

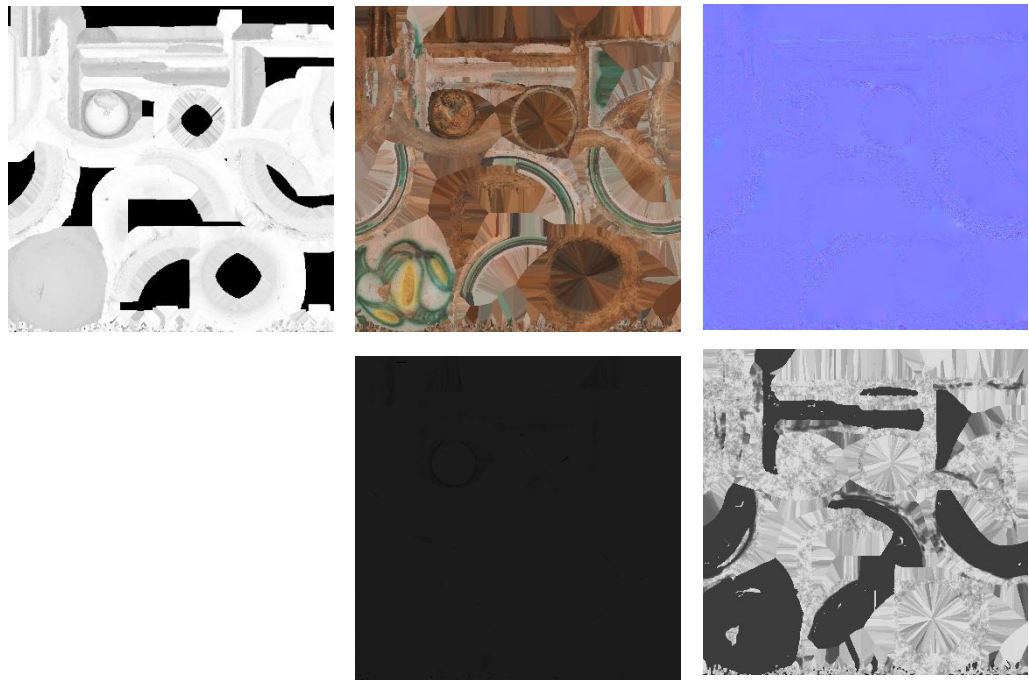


Fig. 6 – AO, Diffuse, Normal (top), Metalness and Roughness (bottom)



Blender Report.

Rendering



Fig. 7 – Rendered image of the final model



Fig. 8 – Final model rendered in context

Scaling



Fig. 9 – Different views of the 3D model showing front, back, sides, bottom and top perspectives



Data Sheet.

Data

Bowl / Escudiella	
Site	Muséu del Pueblu d’Asturies / 7390
Origin	
Creator	Alfar de Faro
Technique	Reduction Firing; Glazed Pottery
Material	Glazed pottery
Date	1875-1900
Purpose of Production	Household ware
Size	4x15x15cm

Description

A plate from the Faro Pottery Workshop. The glazed interior features a motif of the páxara, a hybrid creature combining bird and fish, painted in green lines that stand out against the white surface. Additional green and brown lines encircle the central image.