

Clog



Photogrammetry Report.

Component



Image Data

Orientation Report

| | | |
|----|-------------------------------------|---------|
| 1. | Number of input data | 329 |
| 2. | Registered images count | 329/329 |
| 3. | Points count | 878102 |
| 4. | Total projections | 3863641 |
| 5. | Average images per tie point | 4.4 |
| 6. | Maximum reprojection error [pixels] | 2.00 |
| 7. | Median reprojection error [pixels] | 0.35 |
| 8. | Mean reprojection error [pixels] | 0.46 |



Fig. 1 – Composite 4 Views

| Model Data | |
|-----------------------------|----------|
| Poly Report | |
| 1. High Poly Triangle count | 24403350 |
| 2. Low Poly Triangle count | 74992 |



Fig. 2 – High Poly

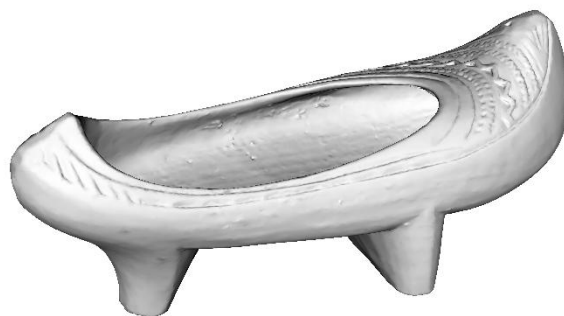


Fig. 3 – Low Poly



Texturing Report.

Roughness

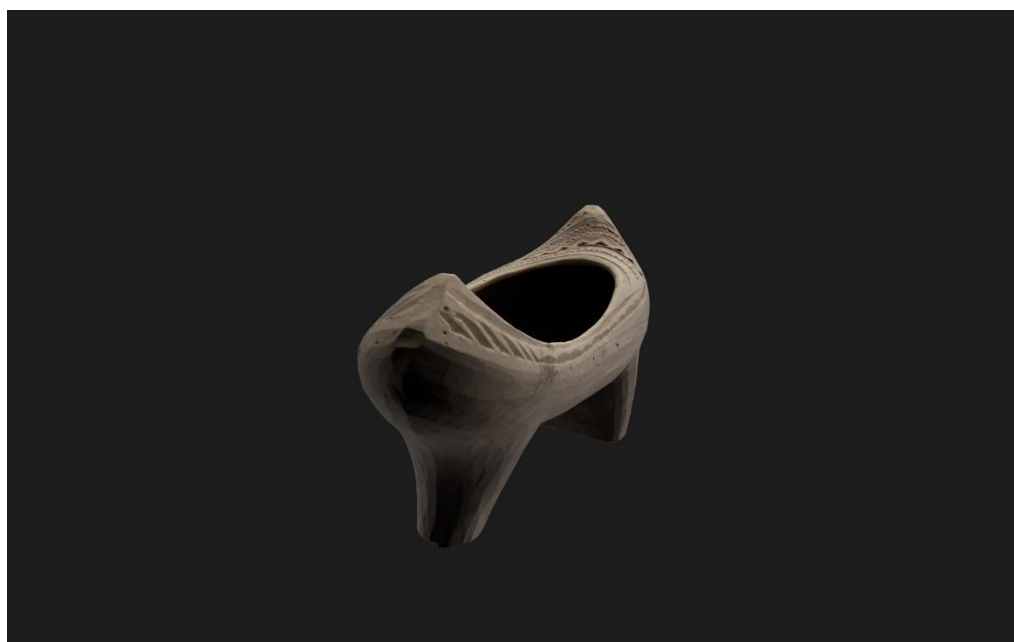


Fig. 4 – Before texturing with SP



Fig. 5 – After texturing with SP

PBR Textures

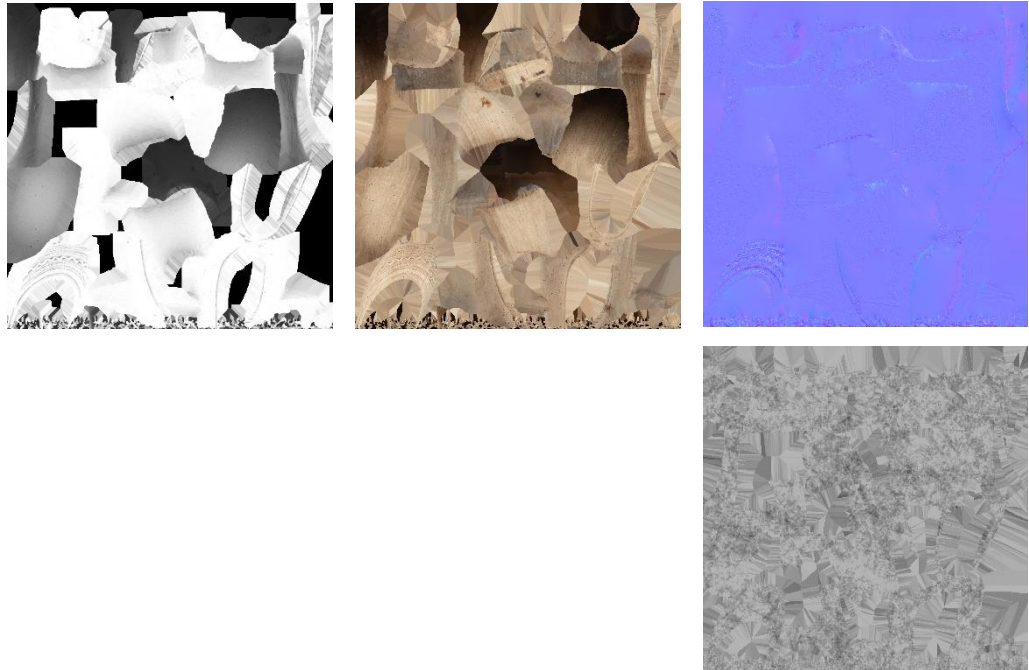


Fig. 6 – AO, Diffuse, Normal (top), and Roughness (bottom)



Blender Report.

Rendering



Fig. 7 – Rendered image of the final model



Fig. 8– Final model rendered in context

Scaling



Fig.9 – Different views of the 3D model showing front, side, back, side, bottom, and top perspectives



Data Sheet.

Data

| Madreña | |
|-----------------------|-------------------------------|
| Site | Muséu del Pueblu d’Asturies / |
| Origin | - |
| Creator | - |
| Technique | Wood carving |
| Material | Wood |
| Date | Ca. 1940 |
| Purpose of Production | Work footwear |
| Size | 13x31x11 |

Description

Wooden footwear called madreña, used in rural areas for fieldwork or in workshops to protect the feet. The body has a boat-like shape and rests on two supports. The surface is decorated with geometric motifs such as zigzags, waves, and lines.