

Jug



Photogrammetry Report.

Component

Image Data	
Orientation Report	
1. Number of input data	425
2. Registered images count	409 / 425
3. Points count	1121489
4. Total projections	4152221
5. Average images per tie point	3.7
6. Maximum reprojection error [pixels]	2.00
7. Median reprojection error [pixels]	0.4
8. Mean reprojection error [pixels]	0.52



Fig. 1 – Composite 4 Views

Model Data		
Poly Report		
1.	High Poly Triangle count	61203268
2.	Low Poly Triangle count	75010

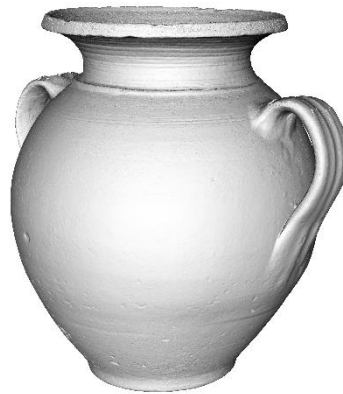


Fig. 2 – High Poly



Fig. 3 – Low Poly



## Texturing Report.

### Roughness, Levels and Texture Correction



Fig. 4 – Before texturing with SP



Fig. 5 – After texturing with SP



## Normal Correction

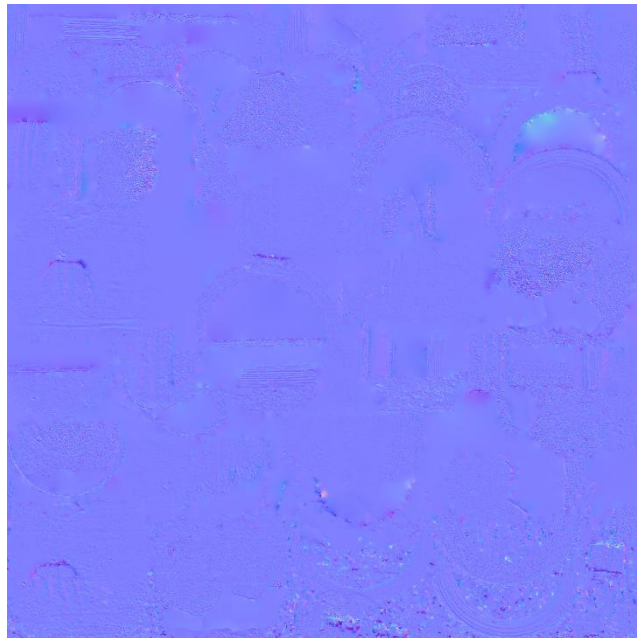


Fig. 6 – Before correcting

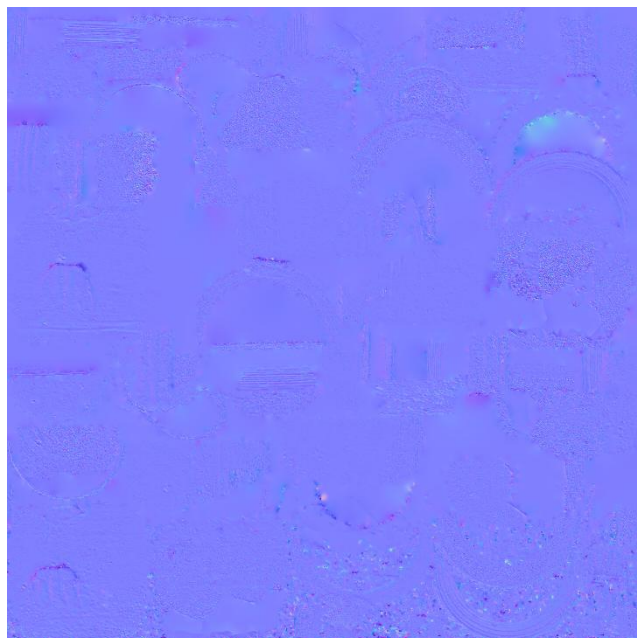


Fig. 7 – After correcting

## PBR Textures

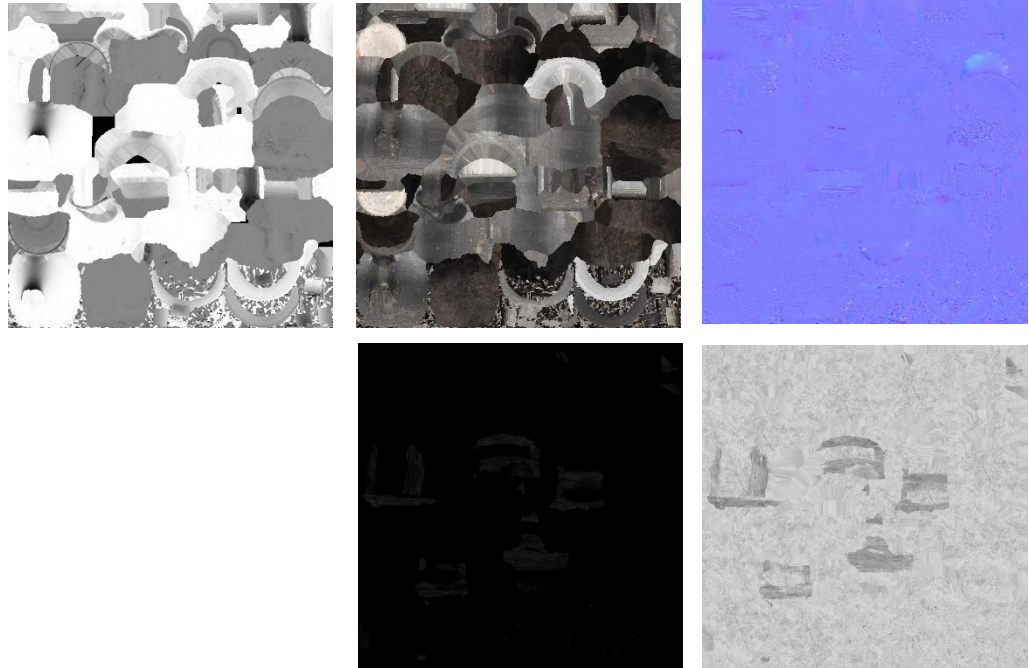


Fig. 8 – AO, Diffuse, Normal (top), Metallic and Roughness (bottom)



Blender Report.

## Mesh Restoration

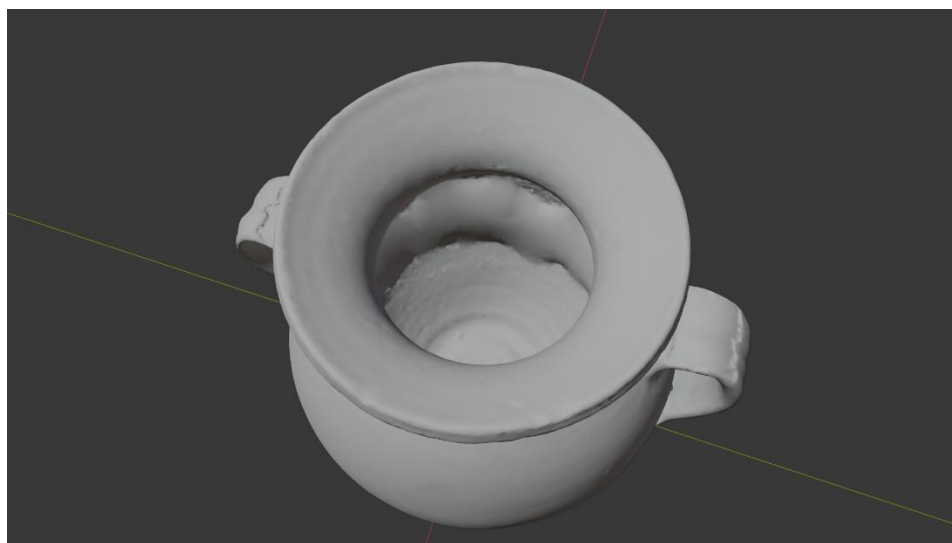


Fig. 9 – Mesh before restoration

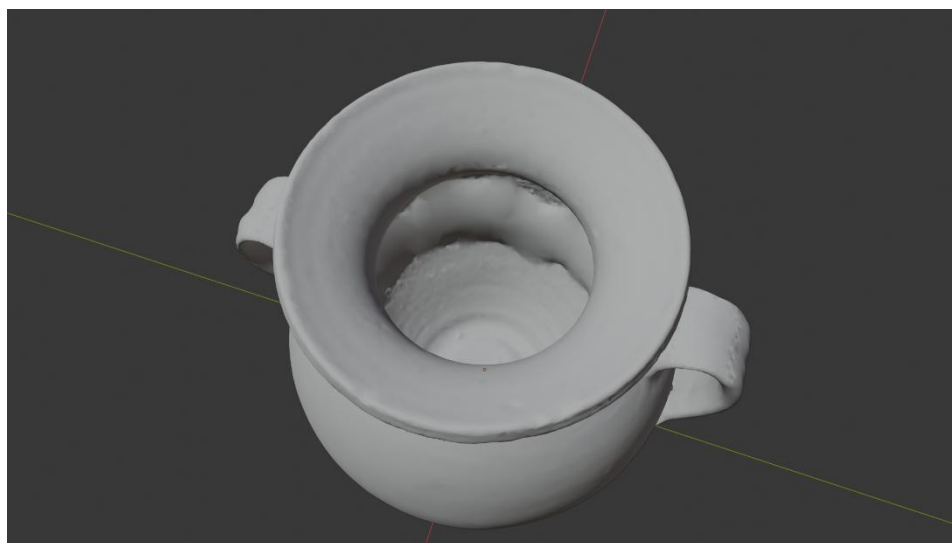


Fig. 10 – Mesh after restoration



## Rendering



Fig. 11 – Rendered image of the final model



Fig. 12 – Final model rendered in context



## Scaling



Fig.13 – Different views of the 3D model showing front, back, sides, bottom and top perspectives



## Data Sheet.

### Data

Jug / Cántara	
Site	Muséu del Pueblu d´Asturies / FM000679
Origin	Miranda, Avilés
Creator	Alfar de Miranda
Technique	Reduction Firing
Material	Clay
Date	Ca. 1880 / 1900
Purpose of Production	Carrying water
Size	34x36x29cm

### Description

A clay jug used to transport water with two handles and vertical decorative motifs on the body of the piece. These lines are carved, and this is the only part of the object that preserves the original burnishing. This type of pottery, produced in this workshop, had a strong influence in northern Spain.