

Mortar



Photogrammetry Report.

Component

Image Data

Orientation Report

| | | |
|----|-------------------------------------|-----------|
| 1. | Number of input data | 223 |
| 2. | Registered images count | 207 / 223 |
| 3. | Points count | 476838 |
| 4. | Total projections | 1821448 |
| 5. | Average images per tie point | 3.8 |
| 6. | Maximum reprojection error [pixels] | 2.00 |
| 7. | Median reprojection error [pixels] | 0.45 |
| 8. | Mean reprojection error [pixels] | 0.56 |



Fig. 1 – Composite 4 Views

| Model Data | | |
|-------------|--------------------------|----------|
| Poly Report | | |
| 1. | High Poly Triangle count | 23850560 |
| 2. | Low Poly Triangle count | 74996 |



Fig. 2 – High Poly



Fig. 3 – Low Poly



Texturing Report.

Roughness and Levels

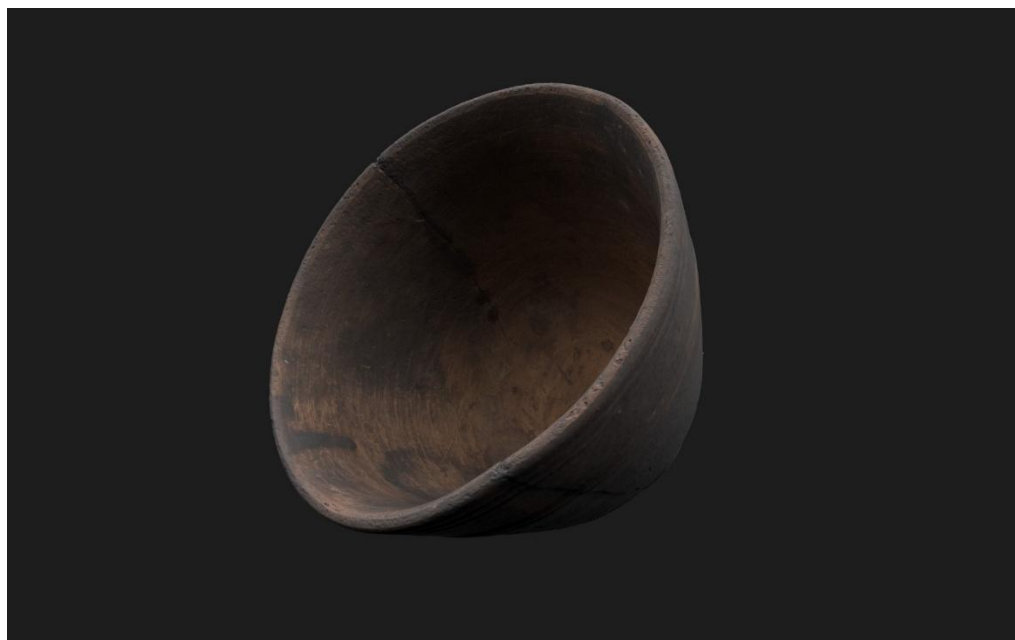


Fig. 4 – Before texturing with SP



Fig. 5 – After texturing with SP

PBR Textures

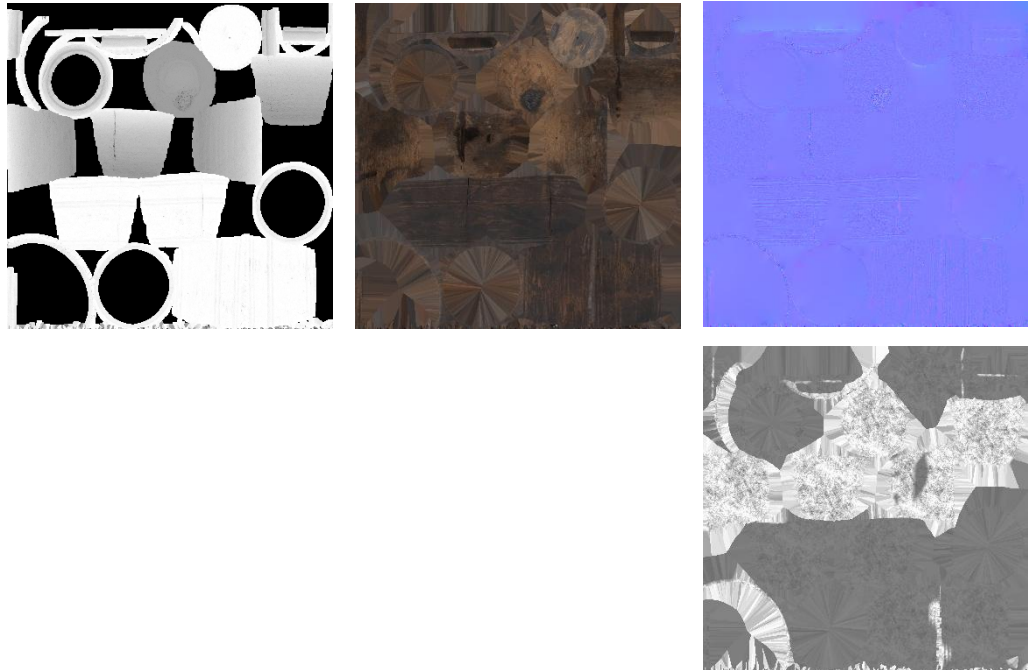


Fig. 6 – AO, Diffuse, Normal (top), and Roughness (bottom)



Blender Report.

Rendering



Fig. 7 – Rendered image of the final model



Fig. 8– Final model rendered in context

Scaling



Fig.9 – Different views of the 3D model showing front, back, sides, bottom, and top perspectives



Data Sheet.

Data

| Mortar | |
|-----------------------|-----------------------------|
| Site | Muséu del Pueblu d´Asturies |
| Origin | - |
| Creator | - |
| Technique | - |
| Material | Wood |
| Date | 19th-20th |
| Purpose of Production | Household ware |
| Size | 11x15x14cm |

Description

Wooden mortar used for crushing ingredients.