

Lunchbox



Photogrammetry Report.



Component

Image Data

Orientation Report

1.	Number of input data	165
2.	Registered images count	149 / 165
3.	Points count	355108
4.	Total projections	1198669
5.	Average images per tie point	3.4
6.	Maximum reprojection error [pixels]	2.00
7.	Median reprojection error [pixels]	0.37
8.	Mean reprojection error [pixels]	0.5



Fig. 1 – Composite 4 Views

Model Data	
Poly Report	
1. High Poly Triangle count	25840286
2. Low Poly Triangle count	74994



Fig. 2 – High Poly



Fig. 3 – Low Poly



Texturing Report.

Roughness

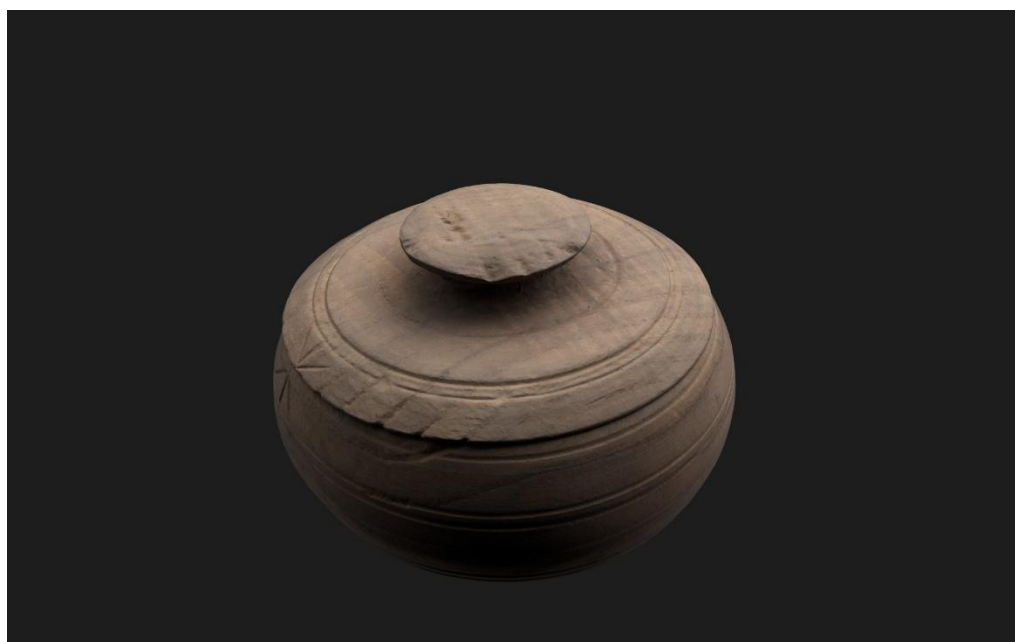


Fig. 4 – Before texturing with SP



Fig. 5 – After texturing with SP

PBR Textures

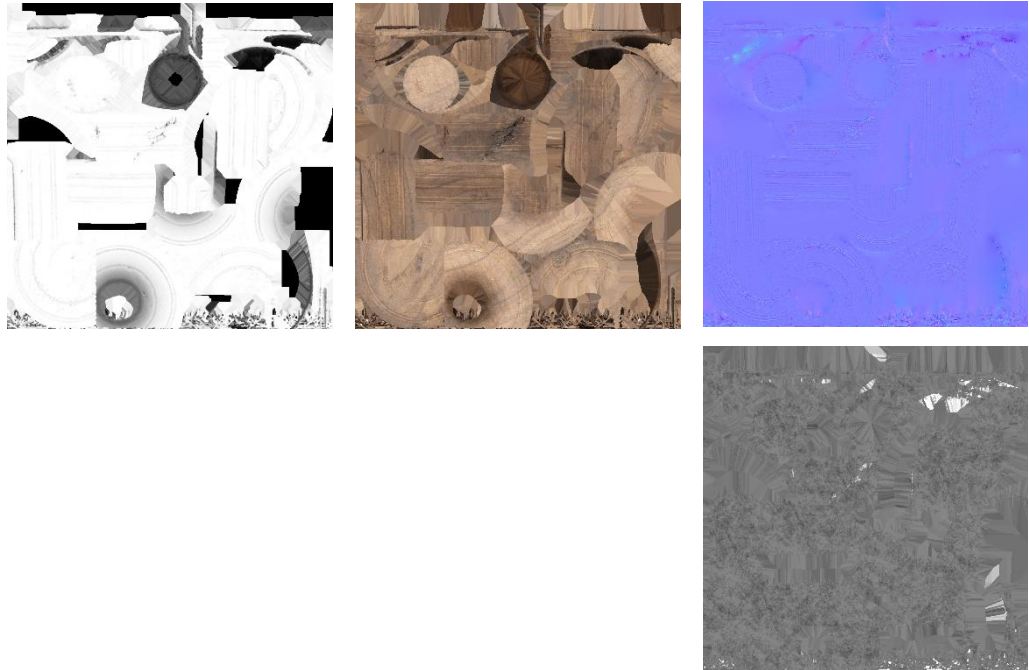


Fig. 6 – AO, Diffuse, Normal (top), and Roughness (bottom)



Blender Report.

Rendering



Fig. 7 – Rendered image of the final model



Fig. 8– Final model rendered in context

Scaling



Fig.9 – Different views of the 3D model showing front, back, sides, bottom, and top perspectives



Data Sheet.

Data

Lunchbox	
Site	Muséu del Pueblu d’Asturies / FM005275
Origin	Foyedo
Creator	-
Technique	Woodturning
Material	Wood
Date	Ca. 1900
Purpose of Production	Food carrier
Size	9x14x14cm

Description

Wooden lunchbox with a lid, used for transporting food. The lid fits perfectly onto the box and is decorated with carved lines. Two arrows, one on the lid and one on the body, indicate how to align them properly to close it and keep the contents secure.