

Stamp



Photogrammetry Report.

Component

Image Data		
Orientation Report		
1.	Number of input data	215
2.	Registered images count	215 / 215
3.	Points count	616174
4.	Total projections	2380939
5.	Average images per tie point	3.9
6.	Maximum reprojection error [pixels]	2.00
7.	Median reprojection error [pixels]	0.38
8.	Mean reprojection error [pixels]	0.51



Fig. 1 – Composite 4 Views

Model Data	
Poly Report	
1. High Poly Triangle count	30071910
2. Low Poly Triangle count	75000



Fig. 2 – High Poly



Fig. 3 – Low Poly



Texturing Report.

Roughness

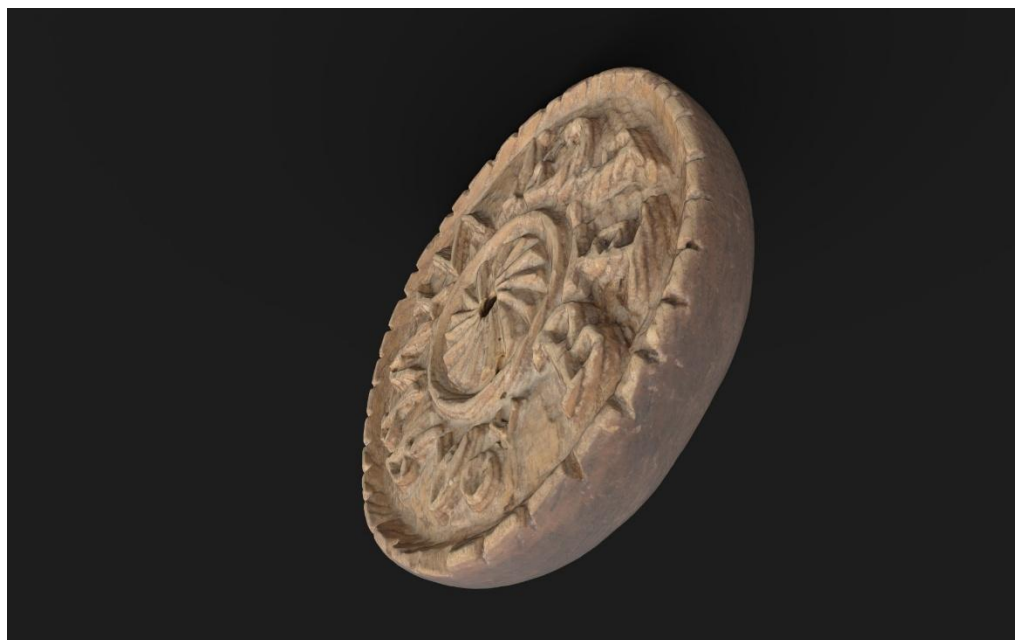


Fig. 4 – Before texturing with SP

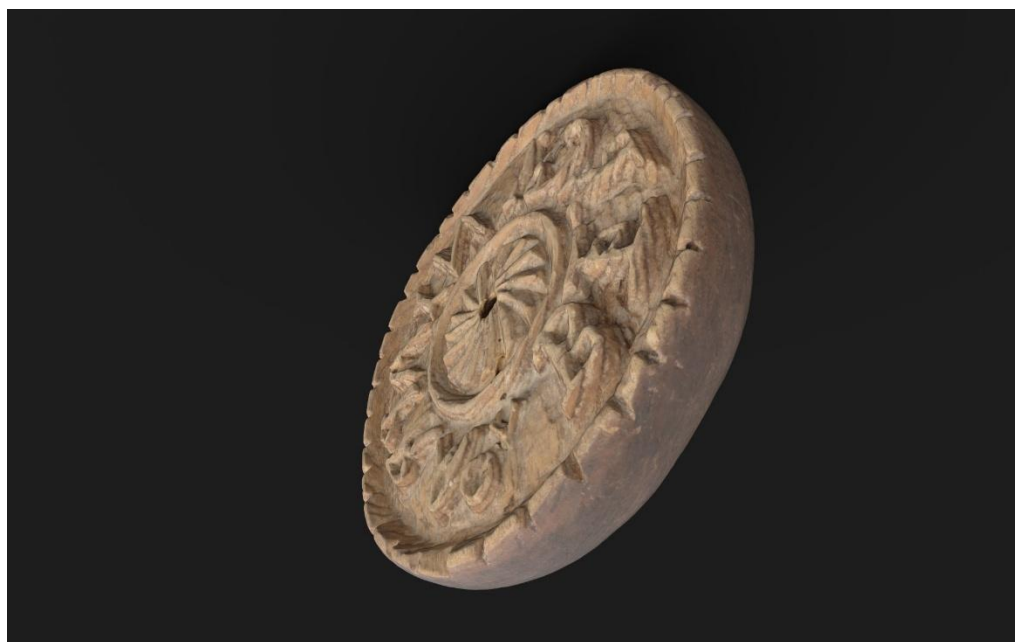


Fig. 5 – After texturing with SP

PBR Textures

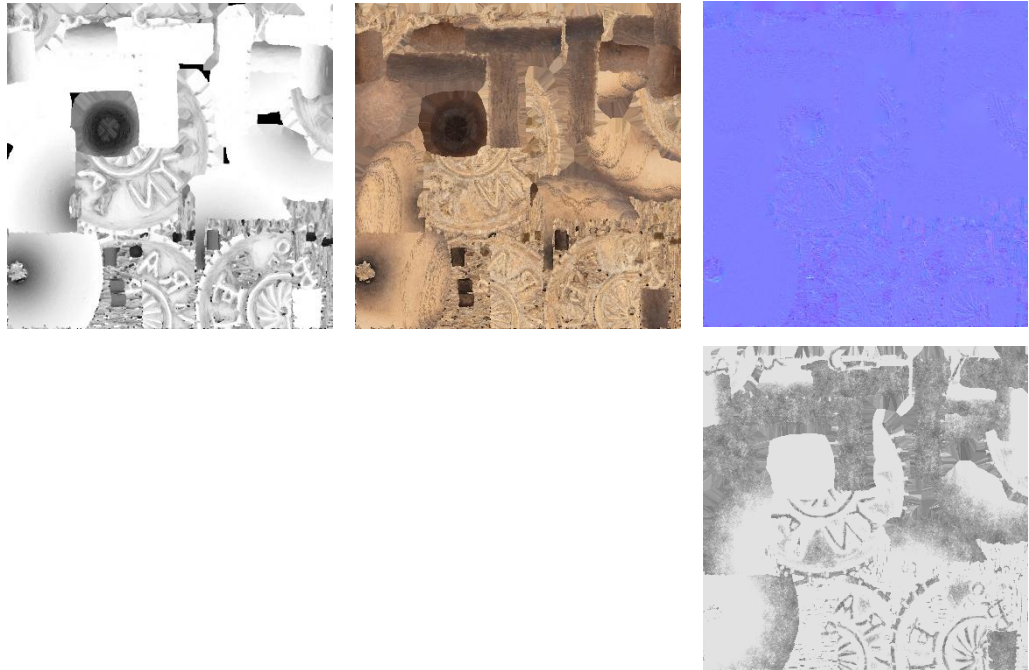


Fig. 6 – AO, Diffuse, Normal (top), and Roughness (bottom)



Blender Report.

Mesh Restoration

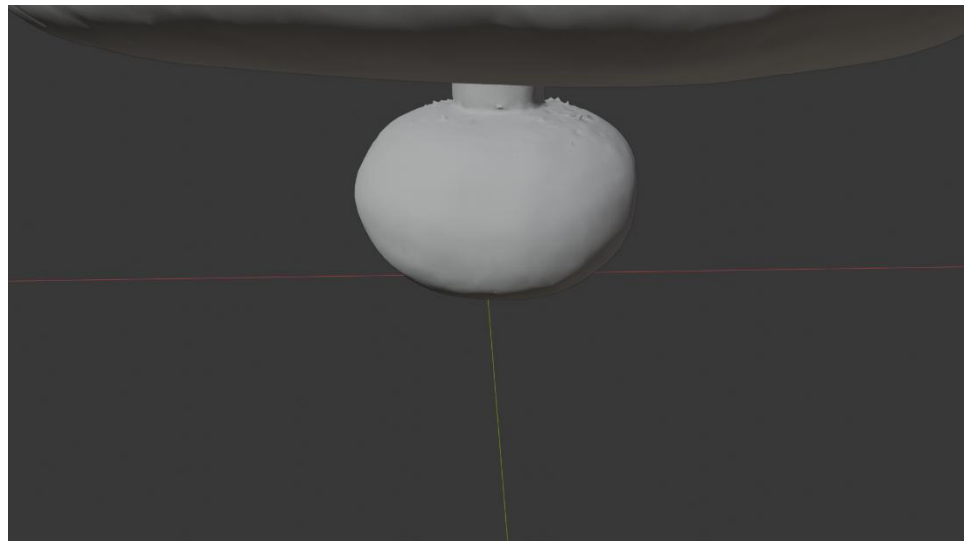


Fig. 7 – Mesh before restoration

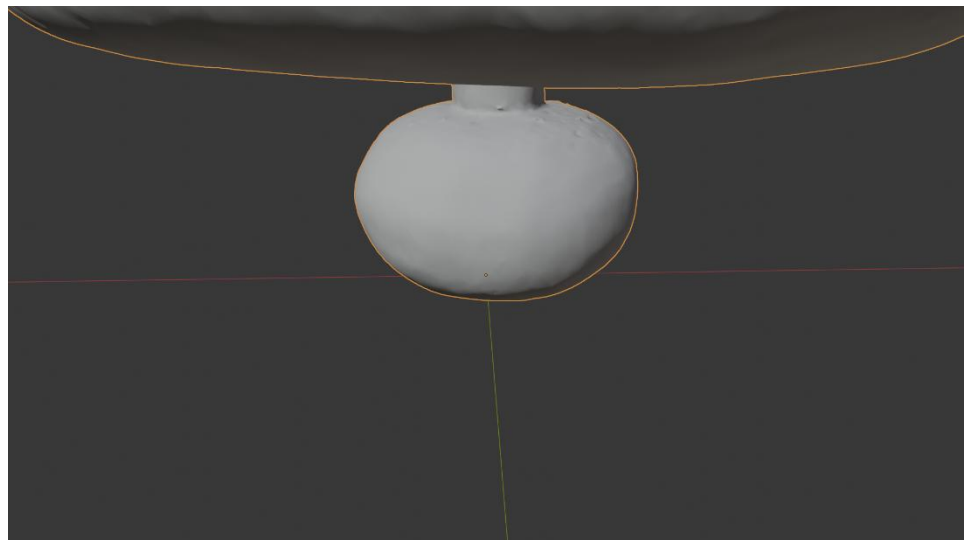


Fig. 8– Mesh after restoration

Rendering



Fig. 9 – Rendered image of the final model



Fig. 10 – Final model rendered in context

Scaling



Fig.11 – Different views of the 3D model showing front, back, sides, bottom, and top perspectives



Data Sheet.

Data

Marco / Stamp	
Site	Muséu del Pueblu d´Asturies / FM003417
Origin	Abantru
Creator	-
Technique	Carving
Material	Wood
Date	Ca. 1930 / 1940
Purpose of Production	Dairy industry
Size	6x12x11cm

Description

Carved circular wooden stamp for Casín cheese, featuring a handle. The inscription "Berginia Prao." surrounds a geometric sun positioned at the center of the composition. Additional geometric motifs encircle the inscription, completing the decoration of the stamp