

Stamp



Photogrammetry Report.

Component

Image Data	
Orientation Report	
1. Number of input data	216
2. Registered images count	214 / 216
3. Points count	517858
4. Total projections	2292154
5. Average images per tie point	4.4
6. Maximum reprojection error [pixels]	2.00
7. Median reprojection error [pixels]	0.32
8. Mean reprojection error [pixels]	0.42



Fig. 1 – Composite 4 Views

Model Data		
Poly Report		
1.	High Poly Triangle count	10889654
2.	Low Poly Triangle count	74998

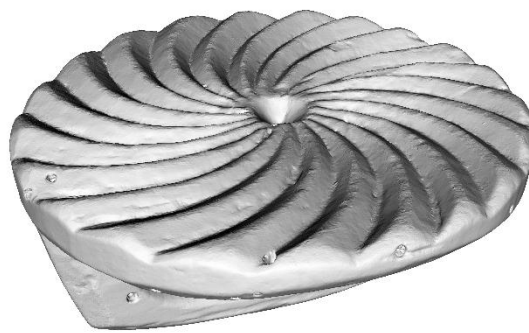


Fig. 2 – High Poly

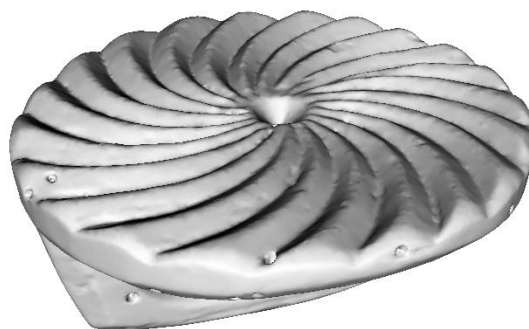


Fig. 3 – Low Poly



## Texturing Report.

### Roughness and Texture Correction



Fig. 4 – Before texturing with SP



Fig. 5 – After texturing with SP

## PBR Textures

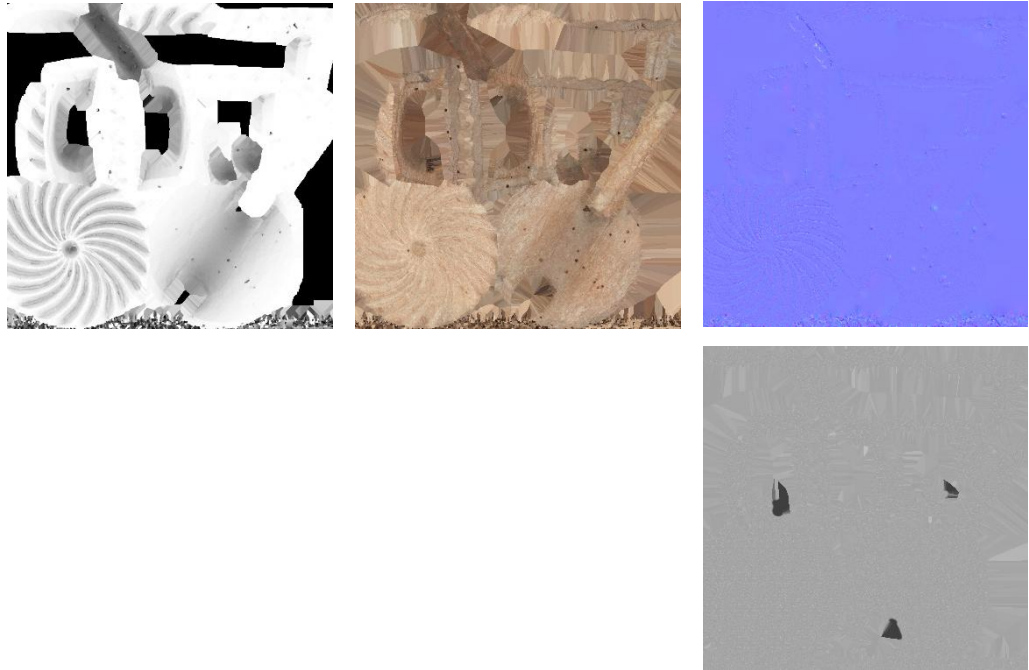


Fig. 6 – AO, Diffuse, Normal (top), and Roughness (bottom)





Blender Report.

## Mesh Restoration

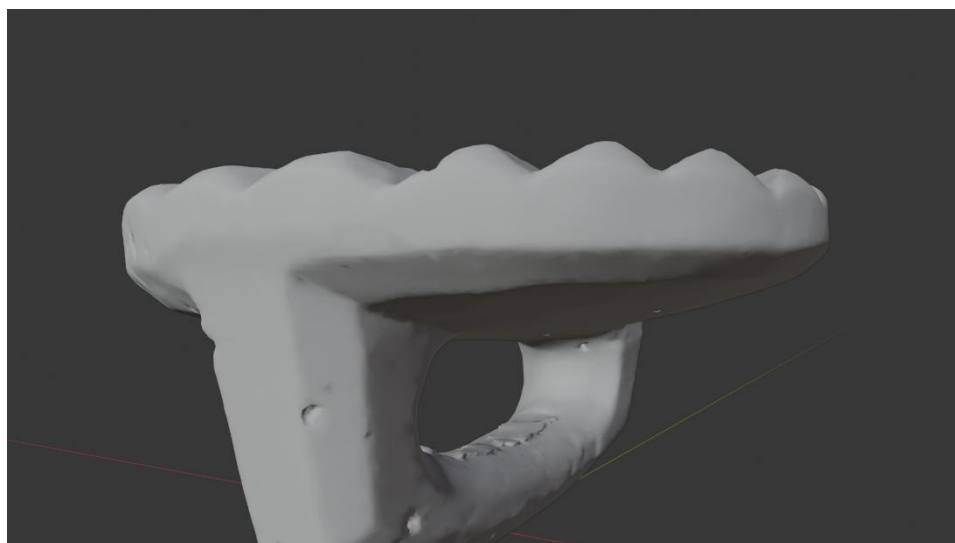


Fig. 7 – Mesh before restoration

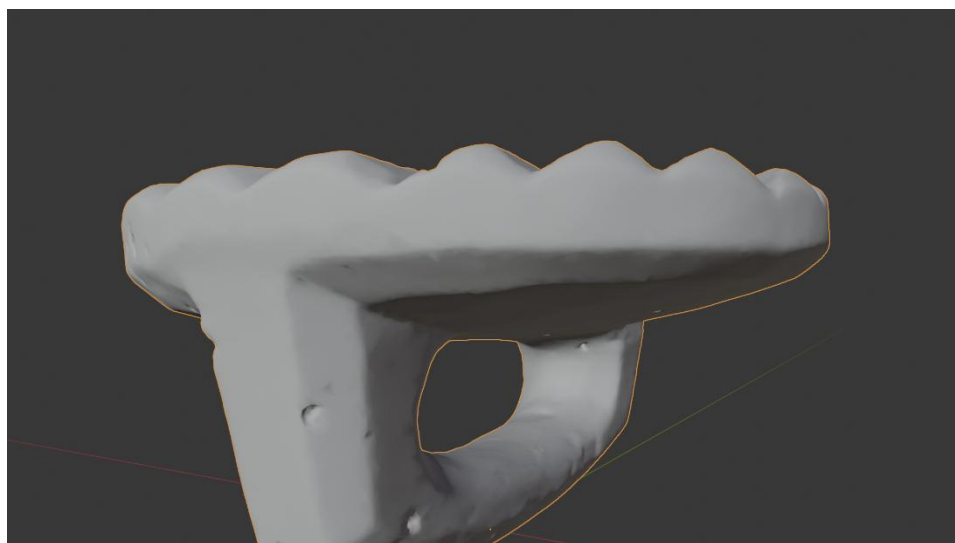


Fig. 8– Mesh after restoration

## Rendering



Fig. 10 – Final model rendered in context

## Scaling



Fig.11 – Different views of the 3D model showing front, back, sides, bottom, and top perspectives





Data Sheet.

Data

Marco / Stamp	
Site	Muséu del Pueblu d´Asturies / FM003418
Origin	Tanes
Creator	-
Technique	Carving
Material	Wood
Date	Ca. 1910 / 1920
Purpose of Production	Dairy industry
Size	4x8,5x8,1cm

Description

Small circular wooden stamp used to mark Casín cheese. A handle allows it to be held and used to stamp the carved geometric solar disc on its surface.