

Wooden container



Photogrammetry Report.

Component

Image Data

Orientation Report

1.	Number of input data	69
2.	Registered images count	67 / 69
3.	Points count	120767
4.	Total projections	317312
5.	Average images per tie point	2.6
6.	Maximum reprojection error [pixels]	2.00
7.	Median reprojection error [pixels]	0.28
8.	Mean reprojection error [pixels]	0.41



Fig. 1 – Composite 4 Views

Model Data	
Poly Report	
1. High Poly Triangle count	15696104
2. Low Poly Triangle count	74996

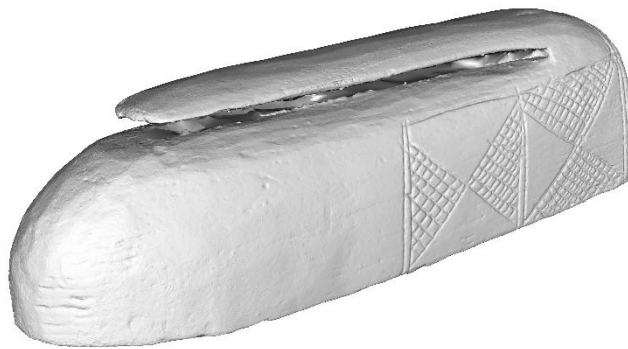


Fig. 2 – High Poly



Fig. 3 – Low Poly



Texturing Report.

Roughness and Texture Correction

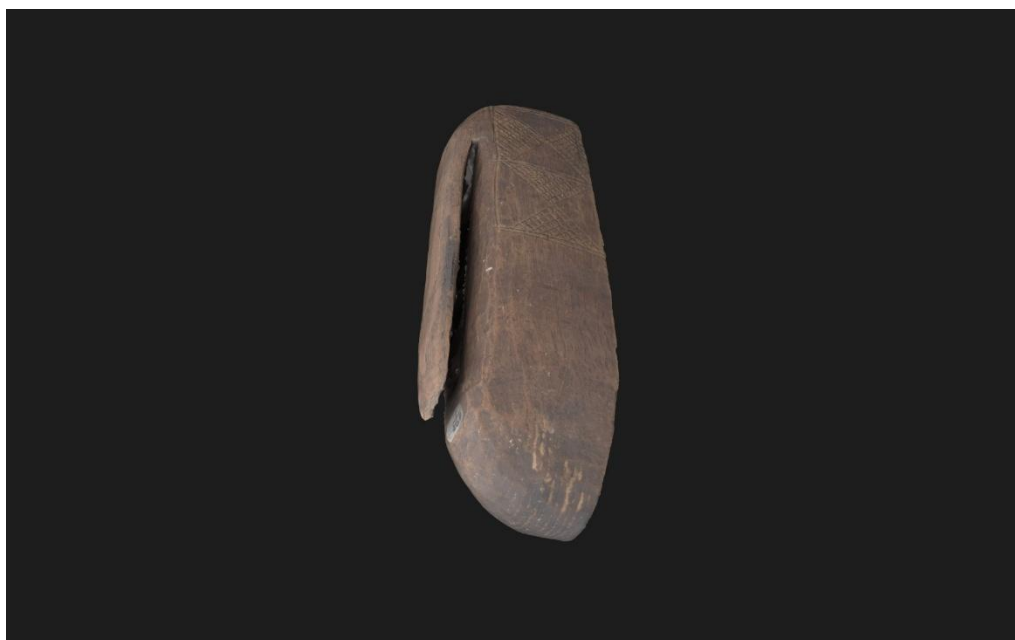


Fig. 4 – Before texturing with SP



Fig. 5 – After texturing with SP



PBR Textures

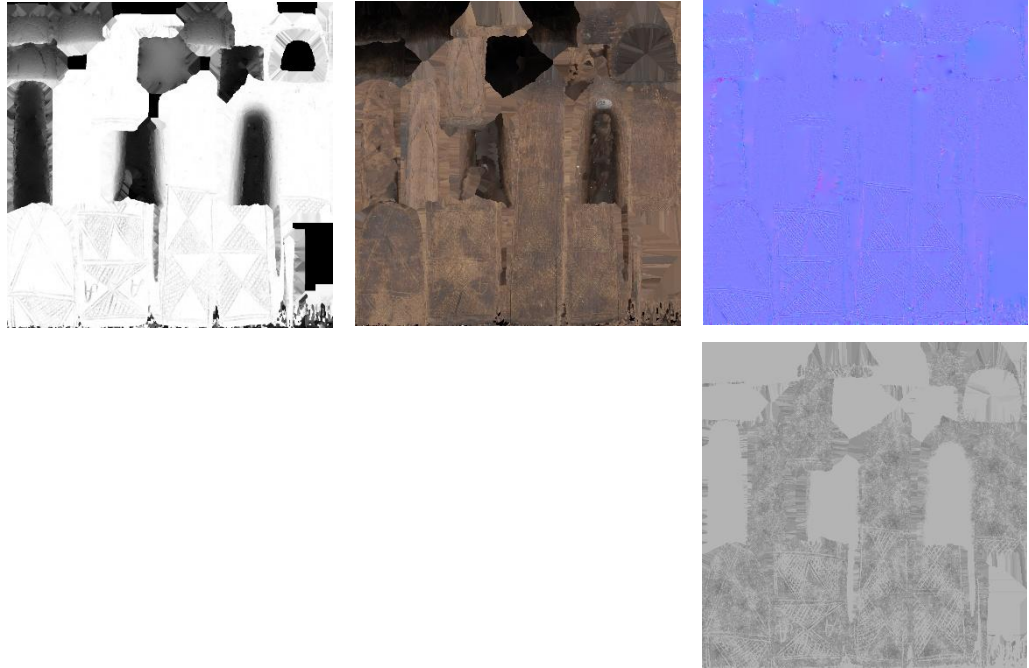


Fig. 6 – AO, Diffuse, Normal (top), and Roughness (bottom)



Blender Report.

Mesh Restoration

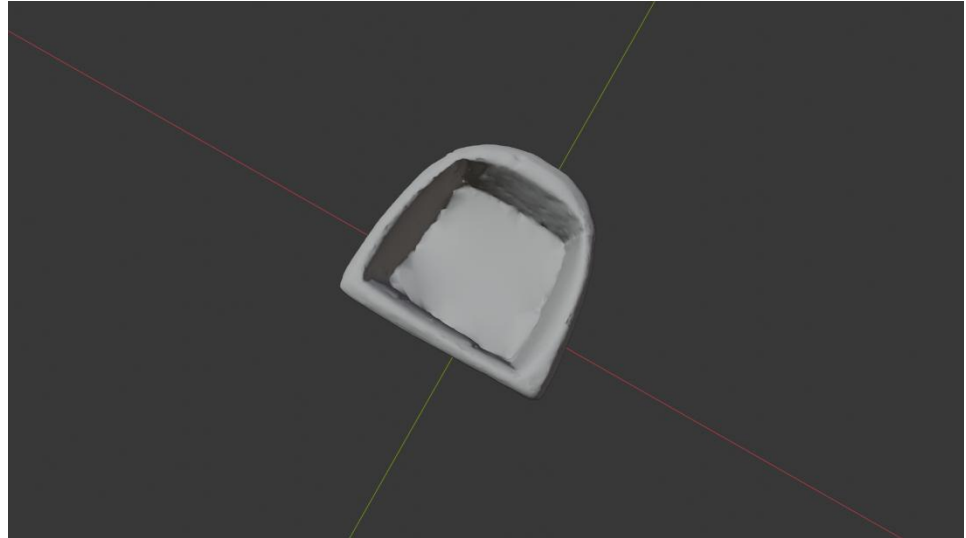


Fig. 7 – 3D Model before restoration

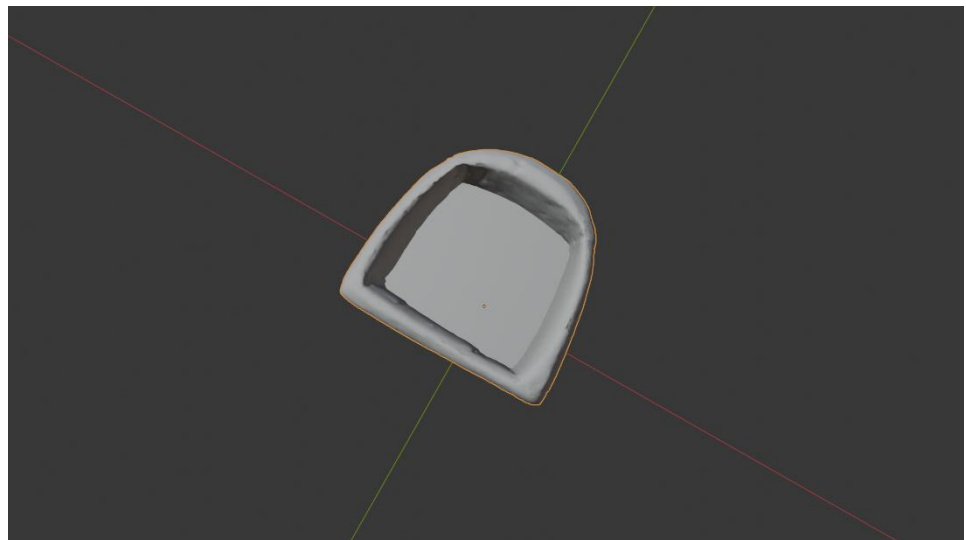


Fig. 7 – 3D Model after restoration

Rendering



Fig. 9 – Rendered image of the final model



Fig. 10– Final model rendered in context

Scaling



Fig.11 – Different views of the 3D model showing front, side, back, side, bottom, and top perspectives



Data Sheet.

Data

Wooden Container	
Site	Muséu del Pueblu d’Asturies / FM000193
Origin	-
Creator	-
Technique	Knife Carving
Material	Chestnut Wood
Date	Ca. 1901/1933
Purpose of Production	Agricultural tasks
Size	23x6,7x6.5

Description

Wooden container with a prismatic shape—semicircular at the base and square at the mouth—used to hold water in which the sharpening stone is kept. A handle on the back allows it to be attached to a belt. The front features geometric motifs with various patterns, highlighting the inscription “A. A.”