

# Wooden container



## Photogrammetry Report.

### Component



#### Image Data

#### Orientation Report

1.	Number of input data	103
2.	Registered images count	96 / 103
3.	Points count	137774
4.	Total projections	374737
5.	Average images per tie point	2.7
6.	Maximum reprojection error [pixels]	2.00
7.	Median reprojection error [pixels]	0.31
8.	Mean reprojection error [pixels]	0.43



Fig. 1 – Composite 4 Views

Model Data		
Poly Report		
1.	High Poly Triangle count	18422104
2.	Low Poly Triangle count	74990



Fig. 2 – High Poly



Fig. 3 – Low Poly



## Texturing Report.

### Roughness and Texture Corrections



Fig. 4 – Before texturing with SP



Fig. 5 – After texturing with SP



## PBR Textures

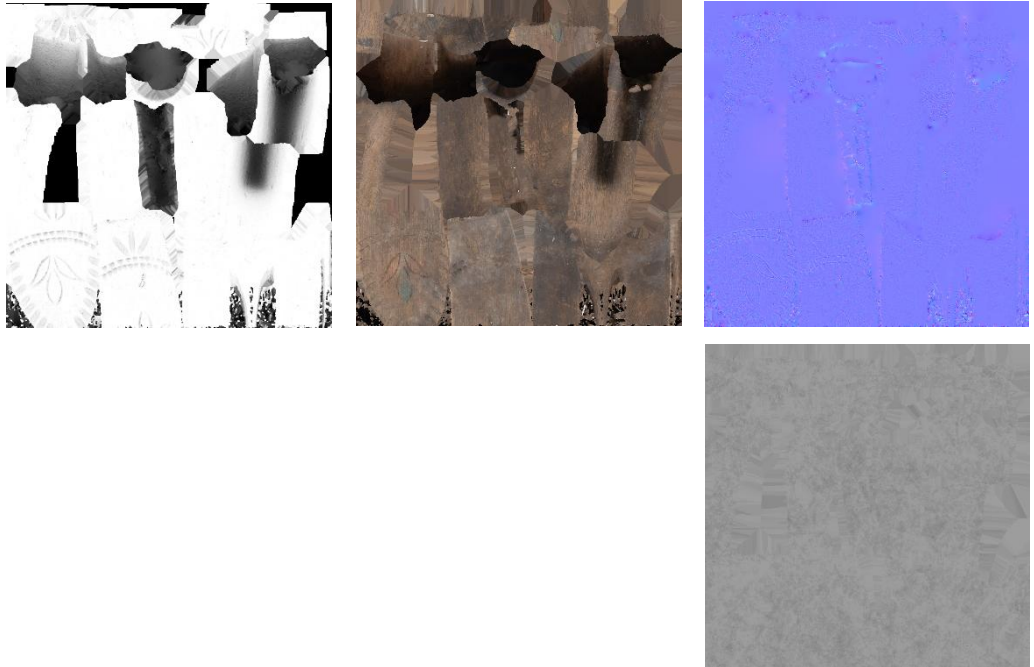


Fig. 6 – AO, Diffuse, Normal (top), and Roughness (bottom)





Blender Report.

## Mesh Restoration

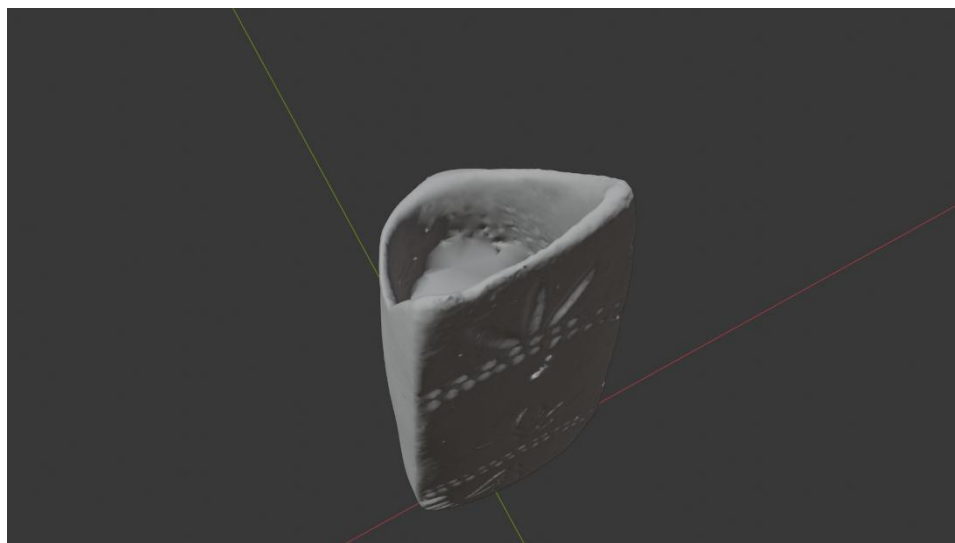


Fig. 7 – 3D Model before restoration

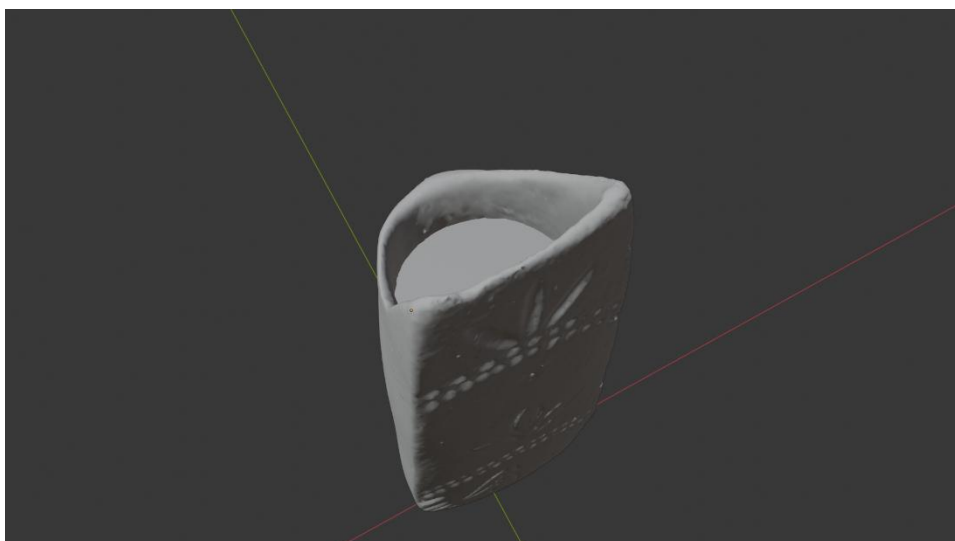


Fig. 7 – 3D Model after restoration

## Rendering



Fig. 9 – Rendered image of the final model



Fig. 10– Final model rendered in context

## Scaling



Fig.11 – Different views of the 3D model showing front, side, back, side, bottom, and top perspectives





Data Sheet.

Data

Wooden container	
Site	Muséu del Pueblu d’Asturies / FM009288
Origin	Siero
Creator	-
Technique	Carving: Polychromy
Material	Chestnut Wood
Date	Ca. 1925/1950
Purpose of Production	Agricultural tasks
Size	24x7x8.3cm

Description

Chestnut wood *gaxapu* with a body that has a semicircular base. The front side features floral and geometric motifs and retains traces of red and blue polychromy. On the back, a handle allows the object to be attached to a belt.