

## Horn container



### Photogrammetry Report.

#### Component

#### Image Data

#### Orientation Report

1.	Number of input data	163
2.	Registered images count	163 / 163
3.	Points count	425076
4.	Total projections	1916251
5.	Average images per tie point	4.5
6.	Maximum reprojection error [pixels]	2.00
7.	Median reprojection error [pixels]	0.41
8.	Mean reprojection error [pixels]	0.51



Fig. 1 – Composite 4 Views

Model Data	
Poly Report	
1. High Poly Triangle count	14961472
2. Low Poly Triangle count	75000

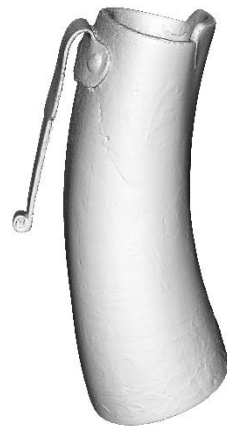


Fig. 2 – High Poly

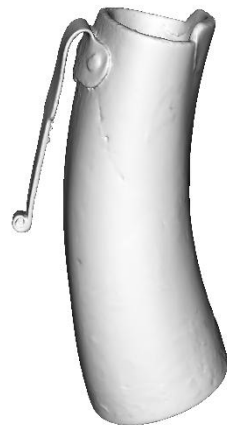


Fig. 3 – Low Poly



## Texturing Report.

### Roughness, Metalness, and Texture Correction



Fig. 4 – Before texturing with SP



Fig. 5 – After texturing with SP

## PBR Textures

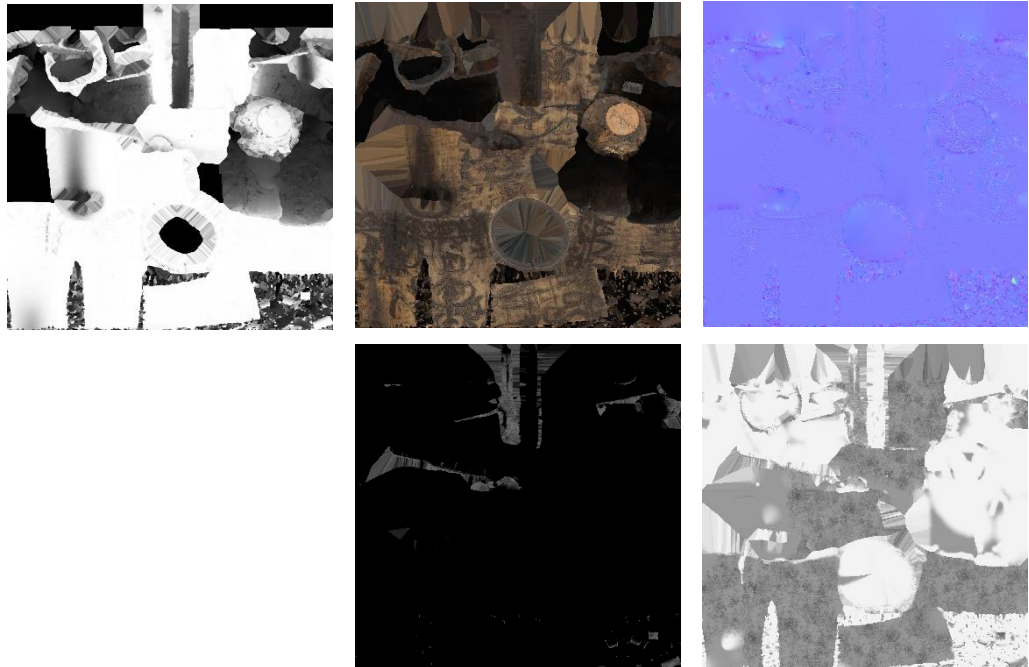


Fig. 6 – AO, Diffuse, Normal (top), Metalness and Roughness (bottom)





Blender Report.

## Mesh Restoration

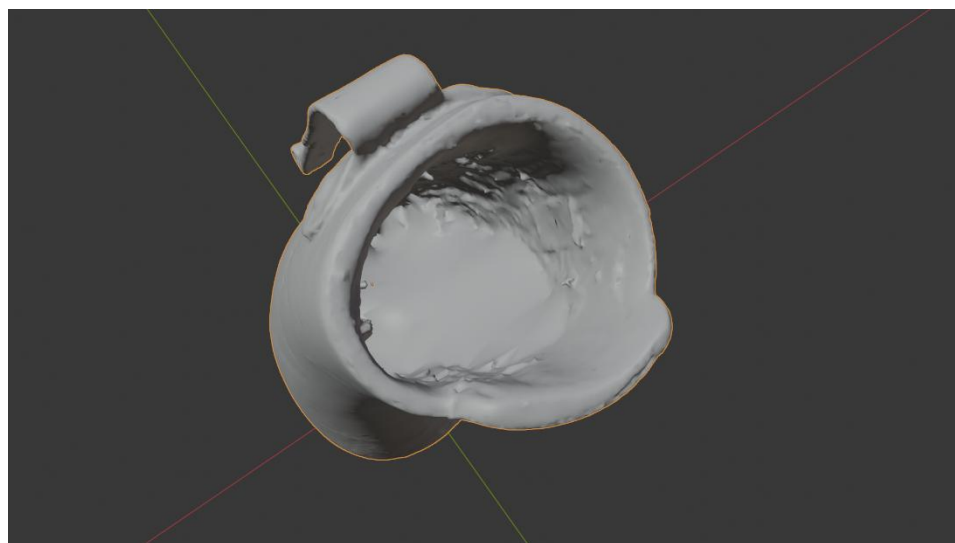


Fig. 7 – 3D Model before restoration

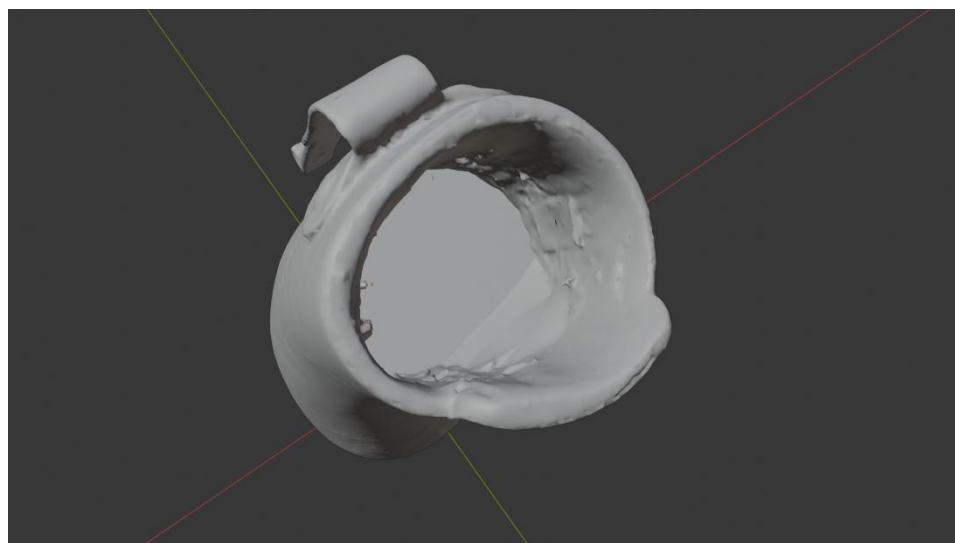


Fig. 7 – 3D Model after restoration

## Rendering



Fig. 9 – Rendered image of the final model



Fig. 10– Final model rendered in context

## Scaling

This process has been carried out following the size established in the Cer.es, so it may vary slightly.



Fig.11 – Different views of the 3D model showing front, side, back, side, bottom, and top perspectives





## Data Sheet.

### Data

Horn Container	
Site	Muséu del Pueblu d’Asturies / RDM1313
Origin	-
Creator	-
Technique	Carving; Forging
Material	Horn; Wood; Iron
Date	Ca. 1875/1910
Purpose of Production	Herding
Size	16,5x11x7,3

### Description

Horn container, used as a *gaxapu* due to its wooden base, featuring a handle for attaching it to a belt. Garlands and flowers decorate the piece, alongside a scene showing a woman with a rake and a man holding a scythe. The inscription, partially erased, indicates the ownership of the object: “I belong to Juan ¿Gil?” (“Soy de Juan ¿Gil?”).