

## Horn container



### Photogrammetry Report.

#### Component 1: Body

##### Image Data

##### Orientation Report

1.	Number of input data	134
2.	Registered images count	133/134
3.	Points count	358777
4.	Total projections	1646575
5.	Average images per tie point	4.6
6.	Maximum reprojection error [pixels]	2.00
7.	Median reprojection error [pixels]	0.4
8.	Mean reprojection error [pixels]	0.5



Fig. 1 – Composite 4 Views

Model Data		
Poly Report		
1.	High Poly Triangle count	17286992
2.	Low Poly Triangle count	74958



Fig. 2 – High Poly

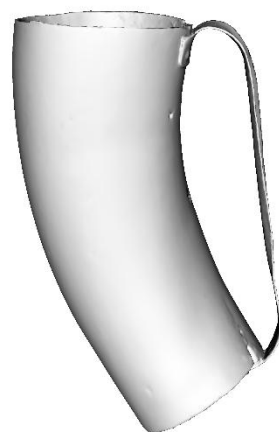


Fig. 3 – Low Poly

Component 2: Lid

Image Data	
Orientation Report	
9. Number of input data	176
10. Registered images count	176/176
11. Points count	413268
12. Total projections	1455705
13. Average images per tie point	3.5
14. Maximum reprojection error [pixels]	2.00
15. Median reprojection error [pixels]	0.32
16. Mean reprojection error [pixels]	0.43

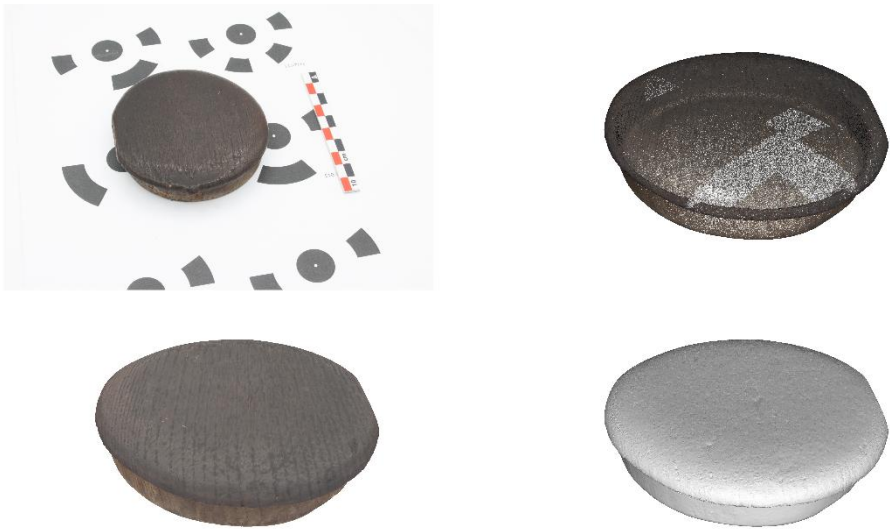


Fig. 4 – Composite 4 Views

Model Data	
Poly Report	
3.	High Poly Triangle count
<hr/>	
4.	Low Poly Triangle count
<hr/>	



Fig. 5 – High Poly



Fig. 6 – Low Poly





## Texturing Report.

### Roughness and Texture corrections



Fig. 7 – Before texturing with SP



Fig. 8 – After texturing with SP



Fig. 9 – Before texturing with SP



Fig. 10 – After texturing with SP

PBR Textures

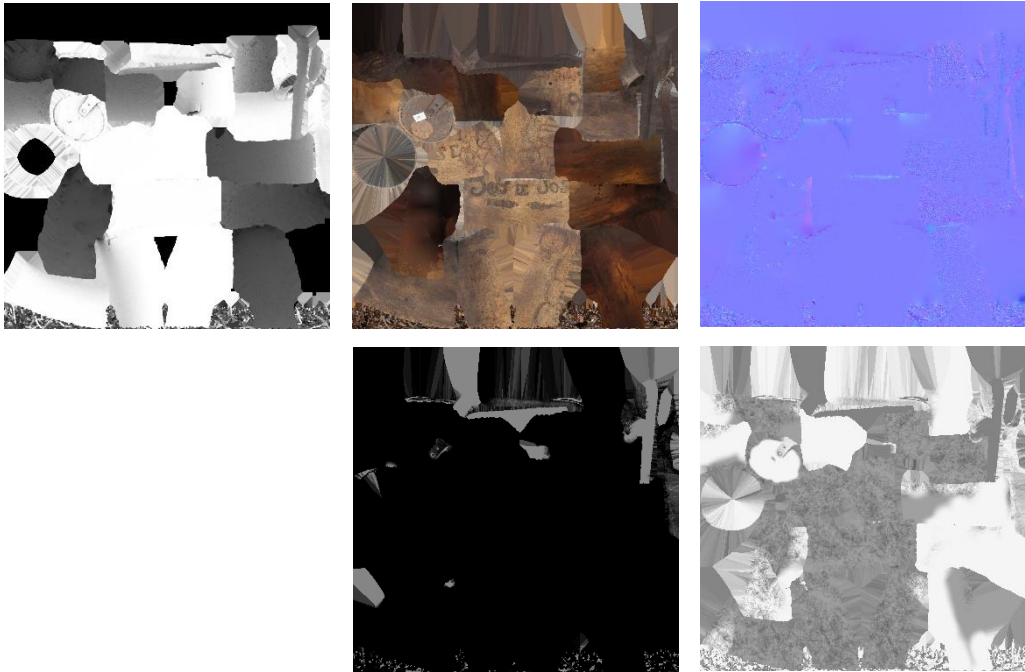


Fig. 11– AO, Diffuse, Normal (top), Metallic, and Roughness (bottom) from body

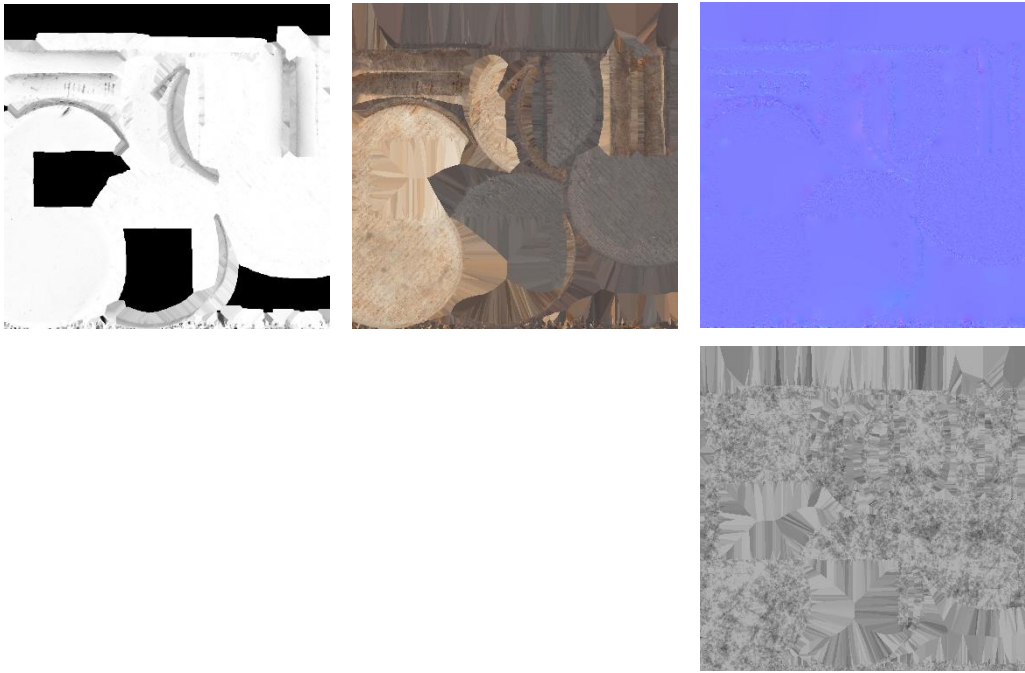


Fig. 12– AO, Diffuse, Normal (top), and Roughness (bottom) from lid





## Blender Report.

### Rendering



Fig. 13 – Rendered image of the final model



Fig. 14 – Final model rendered in context

## Scaling



Fig.15 – Different views of the 3D model showing, front, back, sides, bottom and top perspectives



## Data Sheet.

### Data

Horn container	
Site	Muséu del Pueblu d’Asturies / RDM1311
Origin	-
Creator	-
Technique	Wood carving; Forging; Horn carving
Material	Horn; Iron; Wood
Date	Ca. 1875-1900
Purpose of Production	Herding; Dairy industry
Size	23x16x10cm

### Description

Horn container with an iron handle and a wooden base, traditionally used for milking in mountainous areas. It features inscriptions on both sides: “I belong to Jose” (“Soy de Jose”) and “Enrique Mart.,” accompanied by garlands and vegetal motifs. Two fish appear below the first inscription, and a carved clock stopped at a quarter to twelve completes the decorative programme.