

## Wooden container



### Photogrammetry Report.

#### Component

#### Image Data

#### Orientation Report

1.	Number of input data	257
2.	Registered images count	254/257
3.	Points count	396638
4.	Total projections	1322073
5.	Average images per tie point	3.3
6.	Maximum reprojection error [pixels]	2.00
7.	Median reprojection error [pixels]	0.41
8.	Mean reprojection error [pixels]	0.54



Fig. 1 – Composite 4 Views

Model Data	
Poly Report	
1. High Poly Triangle count	23508128
2. Low Poly Triangle count	74998



Fig. 2 – High Poly



Fig. 3 – Low Poly



## Texturing Report.

### Roughness, Metalness, and Texture Correction



Fig. 4 – Before texturing with SP



Fig. 5 – After texturing with SP

## PBR Textures

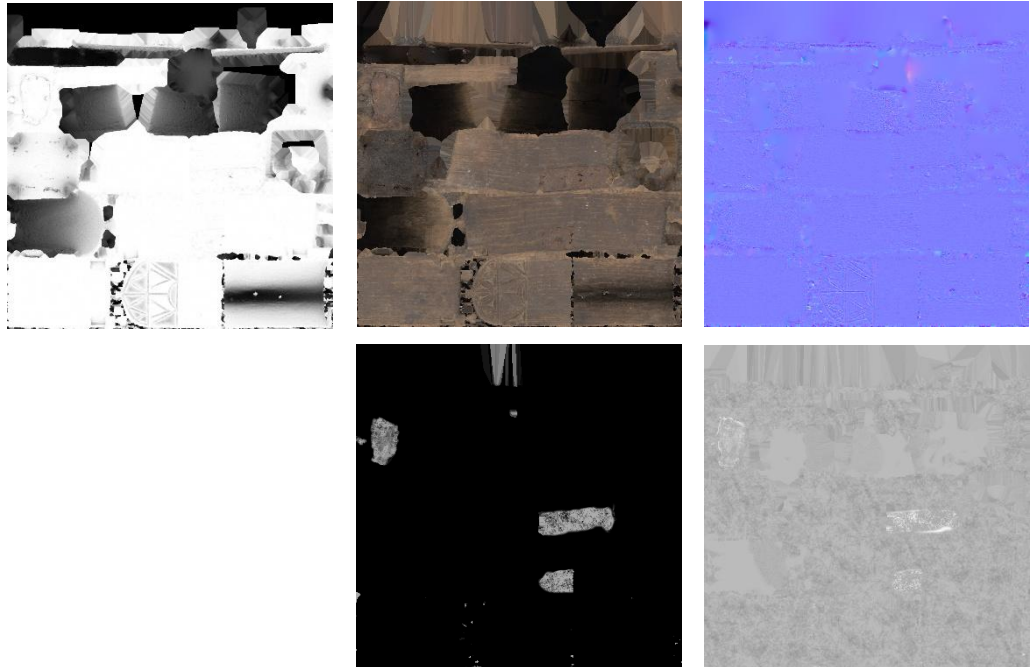


Fig. 6 – AO, Diffuse, Normal (top), Metalness and Roughness (bottom)





Blender Report.

## Mesh Restoration

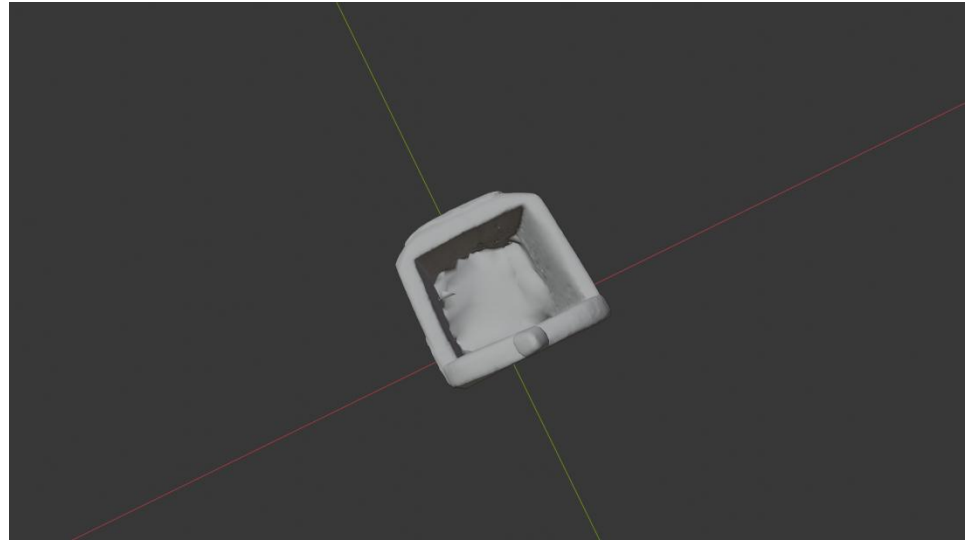


Fig. 7 – 3D Model before restoration

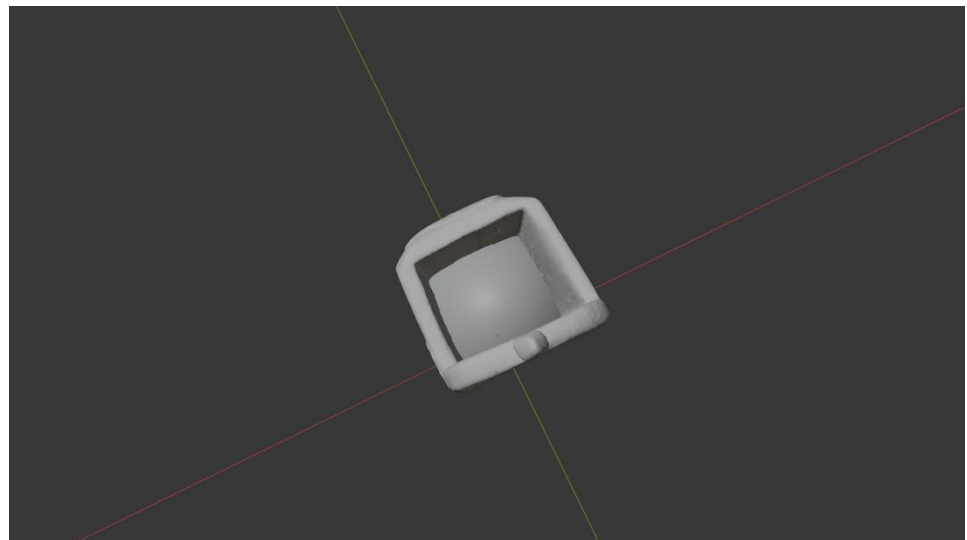


Fig. 7 – 3D Model after restoration

## Rendering



Fig. 9 – Rendered image of the final model



Fig. 10– Final model rendered in context

## Scaling



Fig.11 – Different views of the 3D model showing front, side, back, side, bottom, and top perspectives





Data Sheet.

Data

Wooden container	
Site	Muséu del Pueblu d’Asturies / FM001742
Origin	Quirós
Creator	-
Technique	Carving
Material	Wood; Iron
Date	Ca. 1940
Purpose of Production	Agricultural tasks
Size	23,5x7,7x7,2

Description

*Gaxapu* used to keep the sharpening stone in water for the scythe. This wooden container has a prismatic body supported by four small feet. A handle allows it to be attached to a belt, and geometric motifs surround the initials “V. V.” on the front of the object.