

Wooden container



Photogrammetry Report.

Component



Image Data

Orientation Report

1.	Number of input data	182
2.	Registered images count	178/182
3.	Points count	519303
4.	Total projections	1831695
5.	Average images per tie point	3.5
6.	Maximum reprojection error [pixels]	2.00
7.	Median reprojection error [pixels]	0.34
8.	Mean reprojection error [pixels]	0.46



Fig. 1 – Composite 4 Views

Model Data		
Poly Report		
1.	High Poly Triangle count	23972038
2.	Low Poly Triangle count	74998



Fig. 2 – High Poly



Fig. 3 – Low Poly



Texturing Report.

Roughness and Texture Correction



Fig. 4 – Before texturing with SP

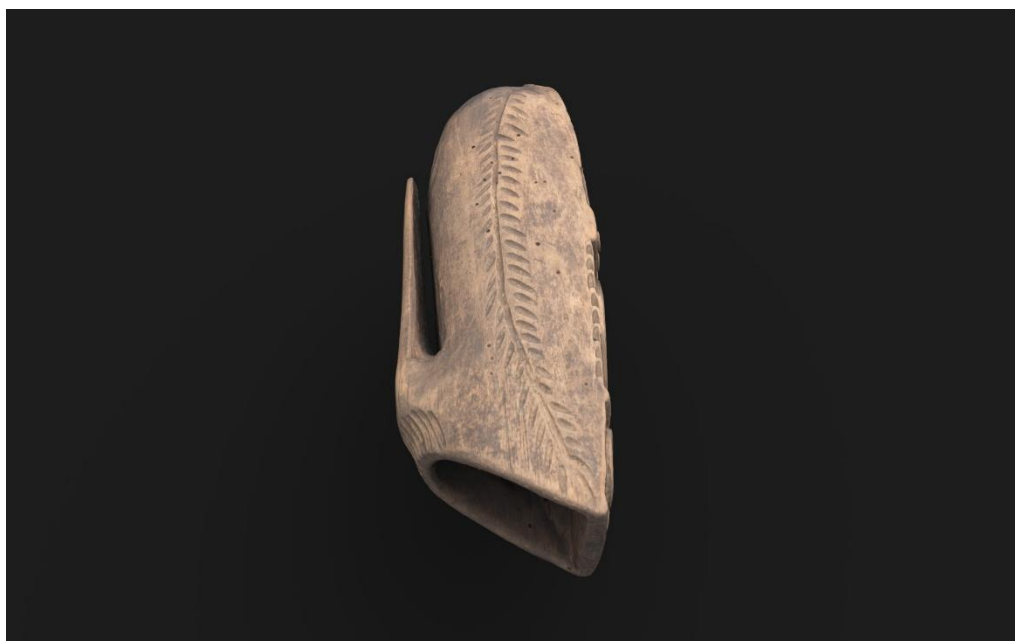


Fig. 5 – After texturing with SP

PBR Textures

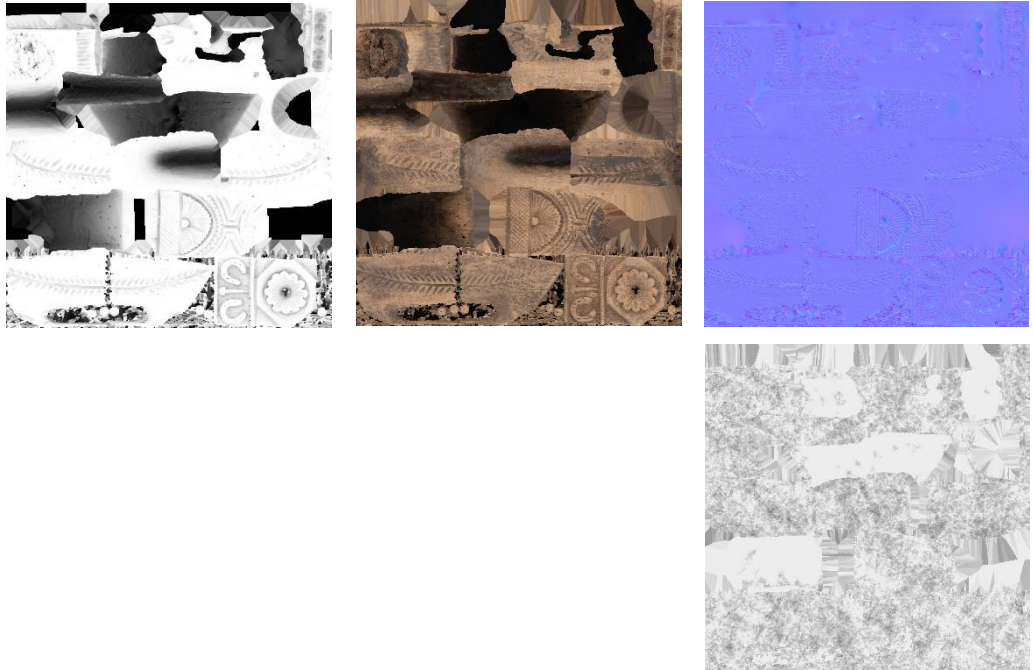


Fig. 6 – AO, Diffuse, Normal (top), and Roughness (bottom)



Blender Report.

Mesh Restoration

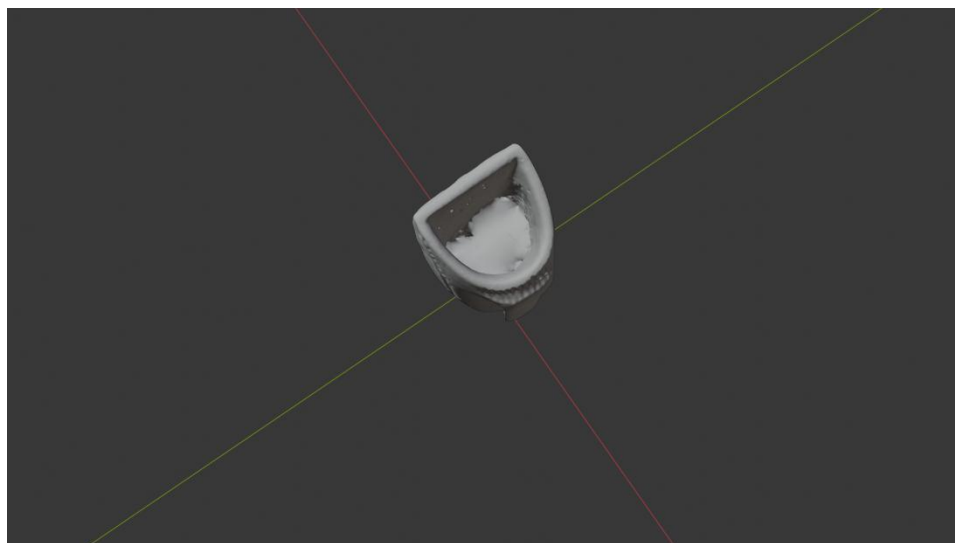


Fig. 7 – 3D Model before restoration

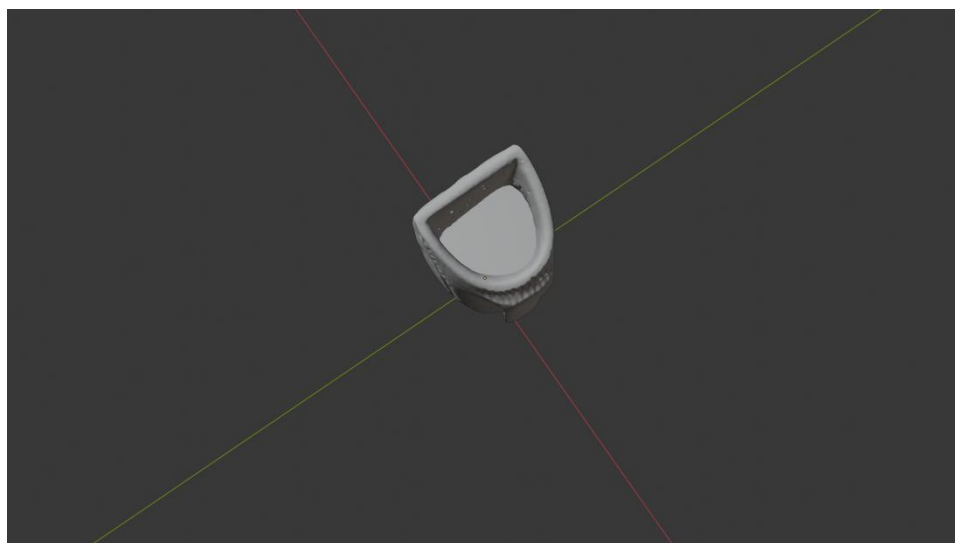


Fig. 7 – 3D Model after restoration

Rendering



Fig. 9 – Rendered image of the final model



Fig. 10– Final model rendered in context

Scaling



Fig.11 – Different views of the 3D model showing front, side, back, side, bottom, and top perspectives



Data Sheet.

Data

Wooden container

Site	Muséu del Pueblu d´Asturies / FM001741
Origin	Bimenes
Creator	-
Technique	Carving
Material	Wood
Date	Ca. 1940
Purpose of Production	Agricultural tasks
Size	23x8,5x7,8

Description

Wooden *gaxapu* with a prismatic body and a semicircular base. On the back, a handle allows it to be attached to a belt, holding the sharpening stone for the scythe. On the front, two horseshoes with a nail between them appear at the top, while a large rosette is carved in the center. The lower part features various carved geometric motifs and surface textures.