

Horn container



Photogrammetry Report.

Component

Image Data

Orientation Report

1.	Number of input data	927
2.	Registered images count	127 / 127
3.	Points count	346949
4.	Total projections	1781589
5.	Average images per tie point	5.1
6.	Maximum reprojection error [pixels]	2.00
7.	Median reprojection error [pixels]	0.39
8.	Mean reprojection error [pixels]	0.5



Fig. 1 – Composite 4 Views

Model Data	
Poly Report	
1. High Poly Triangle count	10666896
2. Low Poly Triangle count	74996



Fig. 2 – High Poly



Fig. 3 – Low Poly



Texturing Report.

Roughness, Metalness and Texture Correction



Fig. 4 – Before texturing with SP



Fig. 5 – After texturing with SP

PBR Textures

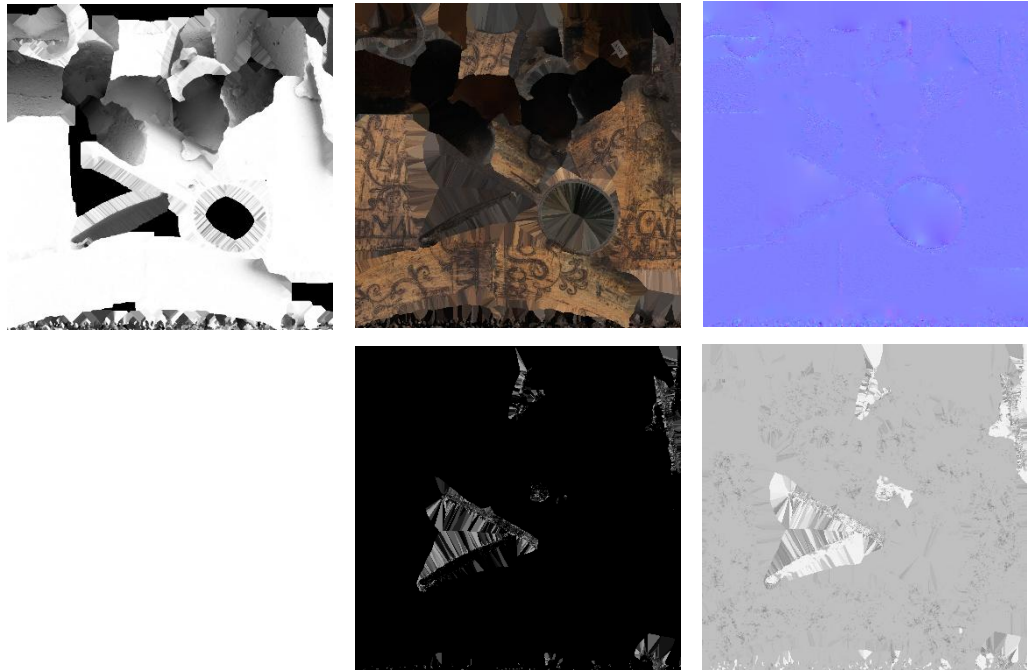


Fig. 6 – AO, Diffuse, Normal (top), Metallic and Roughness (bottom)



Blender Report.

Mesh Restoration



Fig. 7 – 3D Model before restoration

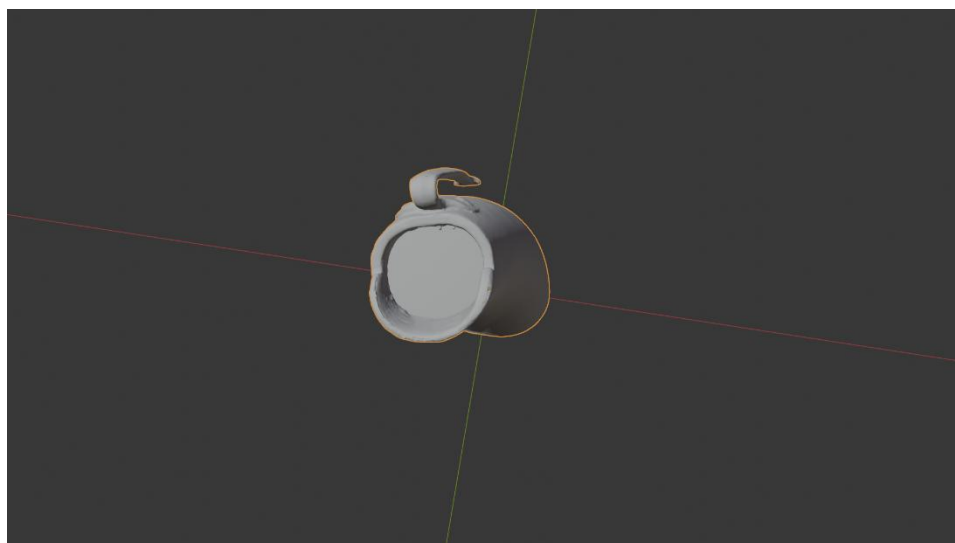


Fig. 7 – 3D Model after restoration

Rendering



Fig. 9 – Rendered image of the final model



Fig. 10– Final model rendered in context

Scaling



Fig.11 – Different views of the 3D model showing front, side, back, side, bottom, and top perspectives



Data Sheet.

Data

Horn Container	
Site	Muséu del Pueblu d’Asturies / RDM1317
Origin	-
Creator	-
Technique	Carving; Forging;
Material	Horn; Iron
Date	ca. 1875/1880
Purpose of Production	Agricultural task: Herding
Size	20x12x8cm

Description

Horn container with an iron handle. The front side features a scene of a man with a scythe, surrounded by garlands and vegetal motifs. The inscription “I belong to Manuel Jesús Calvo” (“Soy de Manuel Jesús Calvo”) indicates the ownership of the object.