

Horn container



Photogrammetry Report.

Component

Image Data

Orientation Report

1. Number of input data	174
2. Registered images count	173 / 174
3. Points count	400808
4. Total projections	1869468
5. Average images per tie point	4,7
6. Maximum reprojection error [pixels]	2.00
7. Median reprojection error [pixels]	0.42
8. Mean reprojection error [pixels]	0.53



Fig. 1 – Composite 4 Views

Model Data

Poly Report

1. High Poly Triangle count	15615982
2. Low Poly Triangle count	74996



Fig. 2 – High Poly



Fig. 3 – Low Poly



Texturing Report.

Roughness, Metalness and Texture Correction



Fig. 4 – Before texturing with SP



Fig. 5 – After texturing with SP

PBR Textures

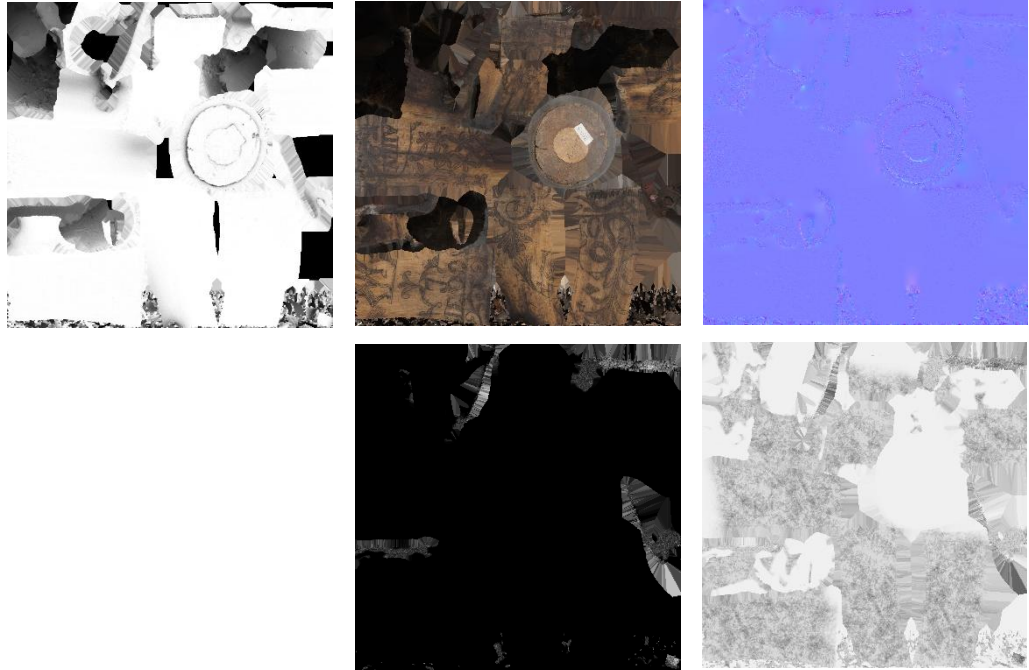


Fig. 6 – AO, Diffuse, Normal (top), Metallic and Roughness (bottom)



Blender Report.

Mesh Restoration

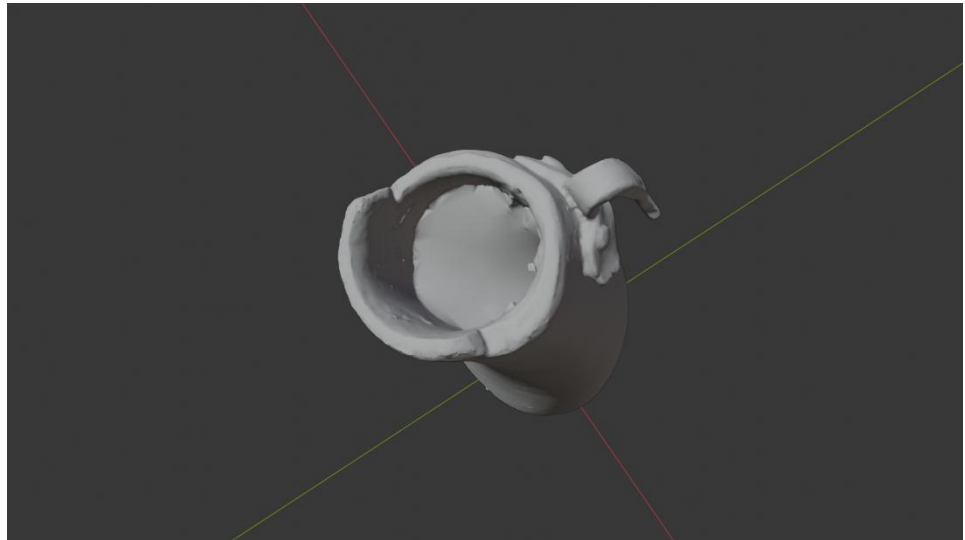


Fig. 7 – 3D Model before restoration

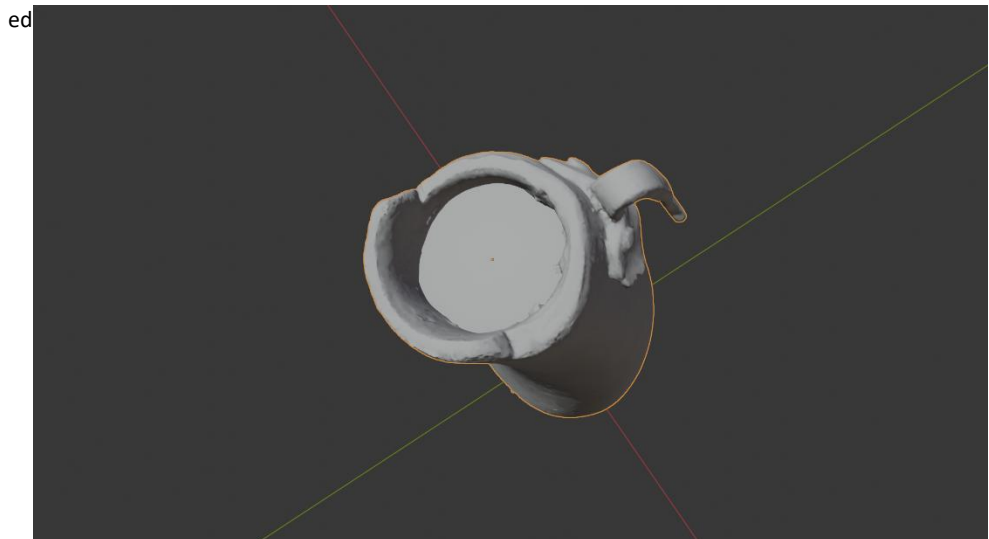


Fig. 7 – 3D Model after restoration

Rendering



Fig. 9 – Rendered image of the final model



Fig. 10– Final model rendered in context

Scaling

This process has been carried out following the size established in the Cer.es, so it may vary slightly.



Fig.11 – Different views of the 3D model showing front, side, back, side, bottom, and top perspectives

Data Sheet.

Data

Horn Container

Site	Muséu del Pueblu d'Asturies / RDM1312
Origin	-
Creator	-
Technique	Carving; Forging;
Material	Horn; Iron; Wood
Date	Ca. 1885/1900
Purpose of Production	Agricultural task
Size	17x10x7cm

Description

A carved horn with a wooden base. Used as a *gaxapu*, its surface is decorated with various motifs. A man riding a horse, vegetals, and flowers are part of the decorative programme, which concludes with two animals: a peacock and a snake. The latter takes the shape of an "S" to begin the inscription "Soy de Jose Cavallin" ("I belong to Jose Cavallin").