

Animal collar



Photogrammetry Report.

Component



| Image Data | |
|--|-----------|
| Orientation Report | |
| 1. Number of input data | 117 |
| 2. Registered images count | 117 / 117 |
| 3. Points count | 236795 |
| 4. Total projections | 837301 |
| 5. Average images per tie point | 3.5 |
| 6. Maximum reprojection error [pixels] | 2.00 |
| 7. Median reprojection error [pixels] | 0.39 |
| 8. Mean reprojection error [pixels] | 0.51 |



Fig. 1 – Composite 4 Views

| Model Data | |
|-----------------------------|----------|
| Poly Report | |
| 1. High Poly Triangle count | 17678142 |
| 2. Low Poly Triangle count | 74996 |

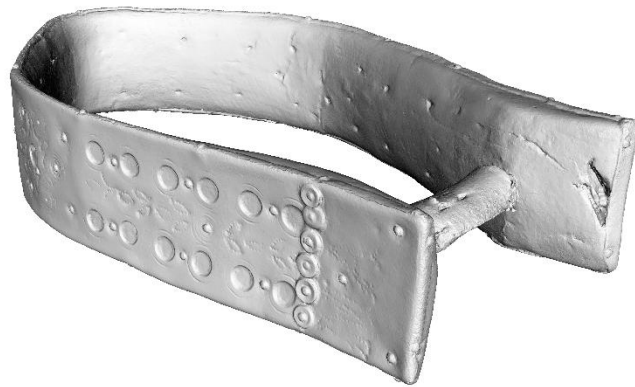


Fig. 2 – High Poly

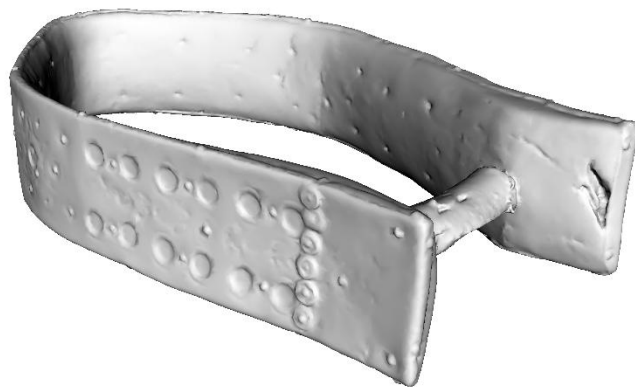


Fig. 3 – Low Poly



Texturing Report.

Roughness, Metalness and Texture Correction



Fig. 4 – Before texturing with SP



Fig. 5 – After texturing with SP



PBR Textures

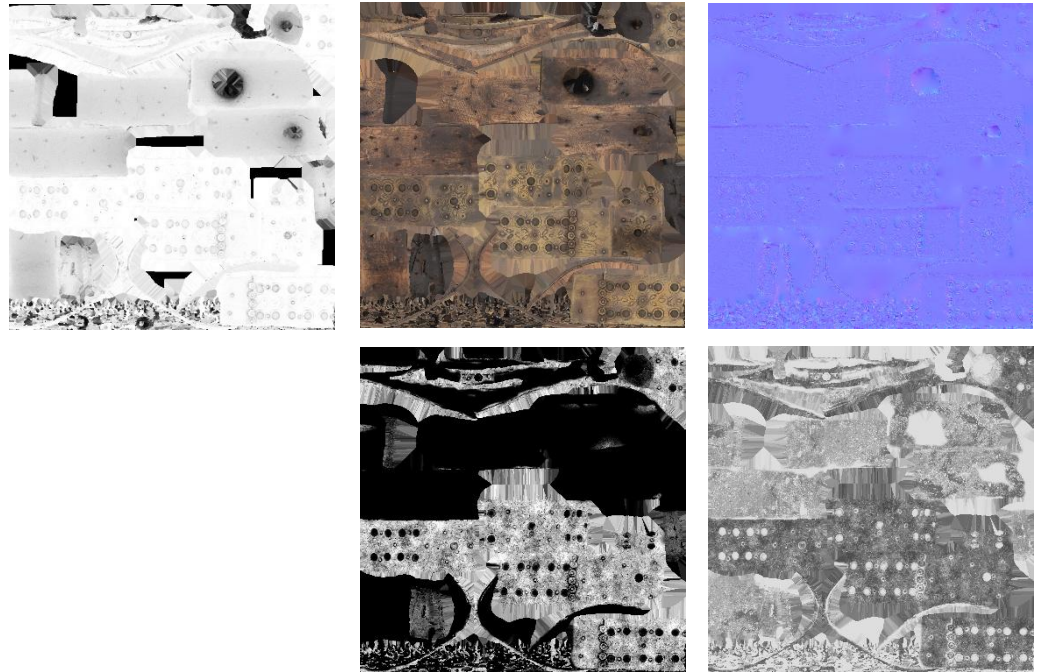


Fig. 6 – AO, Diffuse, Normal (top), Metallic, and Roughness (bottom)



Blender Report.

Rendering



Fig. 7 – Rendered image of the final model



Fig. 8 – Final model rendered in context

Scaling



Fig.9– Different views of the 3D model showing front, side, back, side, bottom, and top perspectives



Data Sheet.

Data

| Horse collar | |
|-----------------------|--|
| Site | Muséu del Pueblu d’Asturies / FM011313 |
| Origin | - |
| Creator | - |
| Technique | Carving; Forging |
| Material | Wood; Iron; Brass |
| Date | Ca. 1940/1950 |
| Purpose of Production | Herding; Livestock farming |
| Size | 34x19x7 |

Description

Wooden collar for livestock, featuring a brass plate nailed to the surface and decorated with stamped motifs. The initials “M. A.” likely indicate the owner of the animal, and the rest of the carved decorations include vegetal patterns and circles. An iron piece connects both ends of the collar, which originally held a bell.