

Animal collar



Photogrammetry Report

Component



Image Data		
Orientation Report		
1.	Number of input data	117
2.	Registered images count	67 / 71
3.	Points count	94605
4.	Total projections	281065
5.	Average images per tie point	3.00
6.	Maximum reprojection error [pixels]	2.00
7.	Median reprojection error [pixels]	0.33
8.	Mean reprojection error [pixels]	0.46



Fig. 1 – Composite 4 Views

Model Data	
Poly Report	
1. High Poly Triangle count	17678142
2. Low Poly Triangle count	74994

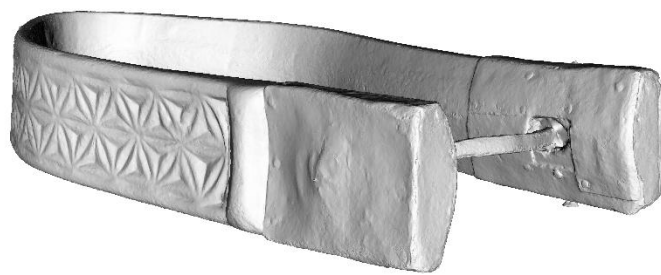


Fig. 2 – High Poly

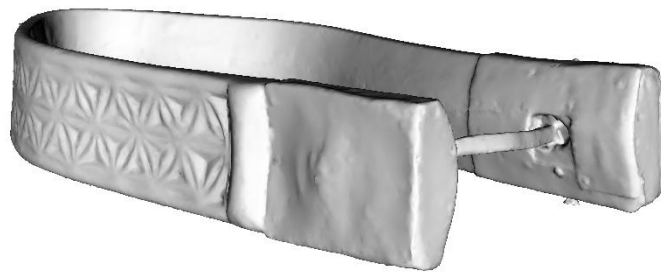


Fig. 3 – Low Poly



Texturing Report.

Roughness, Metalness and Texture Correction



Fig. 4 – Before texturing with SP



Fig. 5 – After texturing with SP



PBR Textures

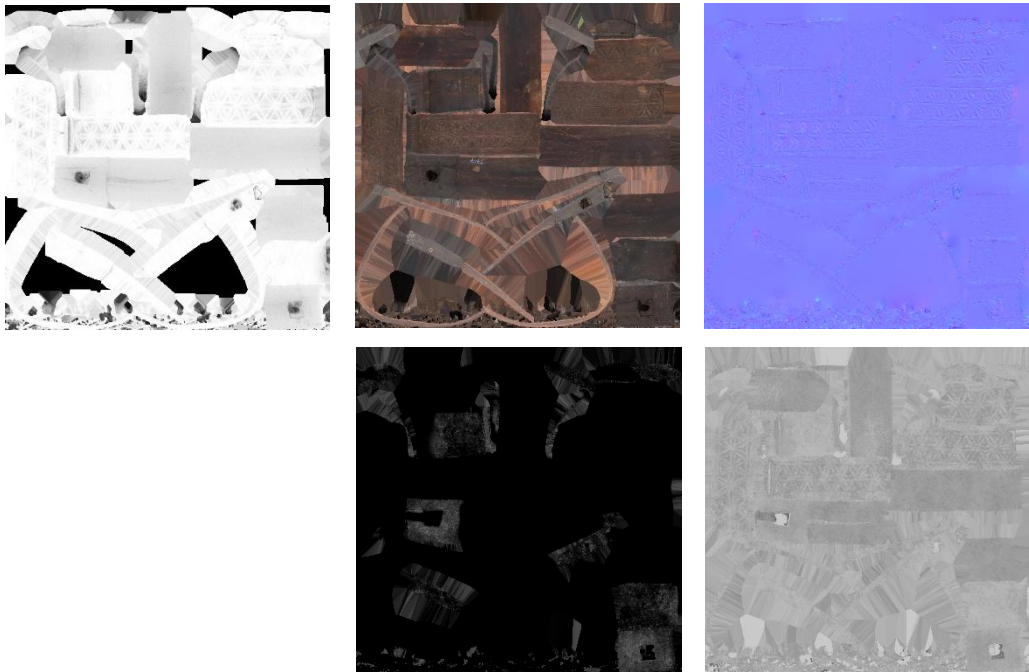


Fig. 6 – AO, Diffuse, Normal (top), Metallic, and Roughness (bottom)



Blender Report.

Rendering



Fig. 7 – Rendered image of the final model



Fig. 8 – Final model rendered in context

Scaling



Fig.9– Different views of the 3D model showing front, back, sides, bottom, and top perspectives



Data Sheet.

Data

Horse collar	
Site	Muséu del Pueblu d´Asturies / FM005767
Origin	-
Creator	-
Technique	Carving; Forging
Material	Wood; Iron;
Date	Ca. 1900/1920
Purpose of Production	Herding; Livestock farming
Size	30x15x5

Description

Wooden collar with riveted iron reinforcements at both ends, connected by an iron piece designed to hold a bell. The wood is decorated with carved six-petal flowers distributed around the entire piece.