

Basket bag



Photogrammetry Report



Component

Image Data

Orientation Report

1.	Number of input data	229
2.	Registered images count	229 / 229
3.	Points count	456460
4.	Total projections	1572647
5.	Average images per tie point	3.4
6.	Maximum reprojection error [pixels]	2.00
7.	Median reprojection error [pixels]	0.41
8.	Mean reprojection error [pixels]	0.53



Fig. 1 – Composite 4 Views

Model Data	
Poly Report	
1. High Poly Triangle count	35032082
2. Low Poly Triangle count	74942



Fig. 2 – High Poly



Fig. 3 – Low Poly



Texturing Report.

Roughness and Texture Correction



Fig. 4 – Before texturing with SP

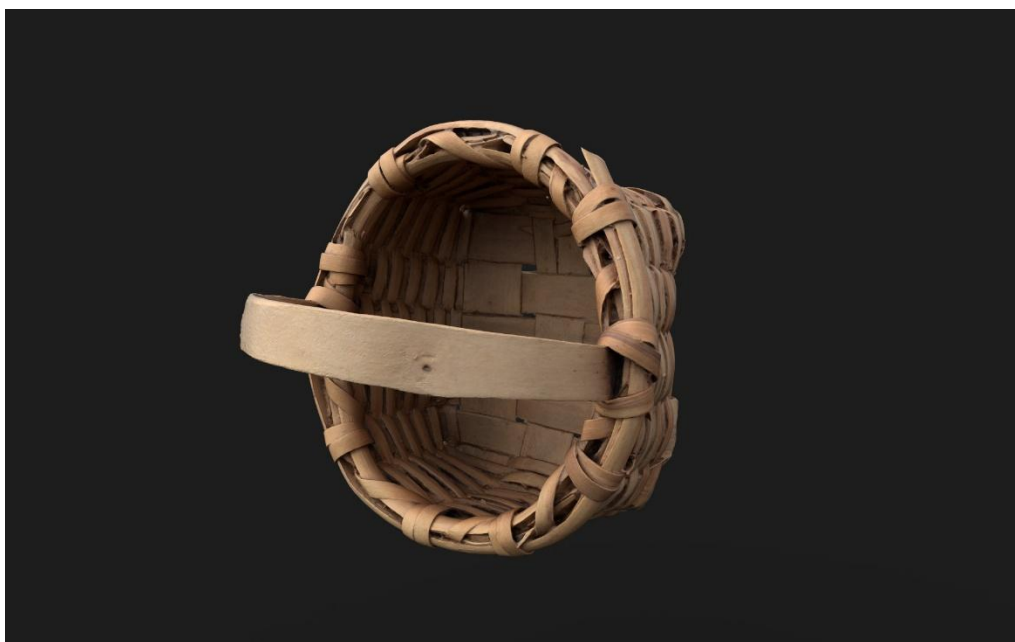


Fig. 5 – After texturing with SP

PBR Textures

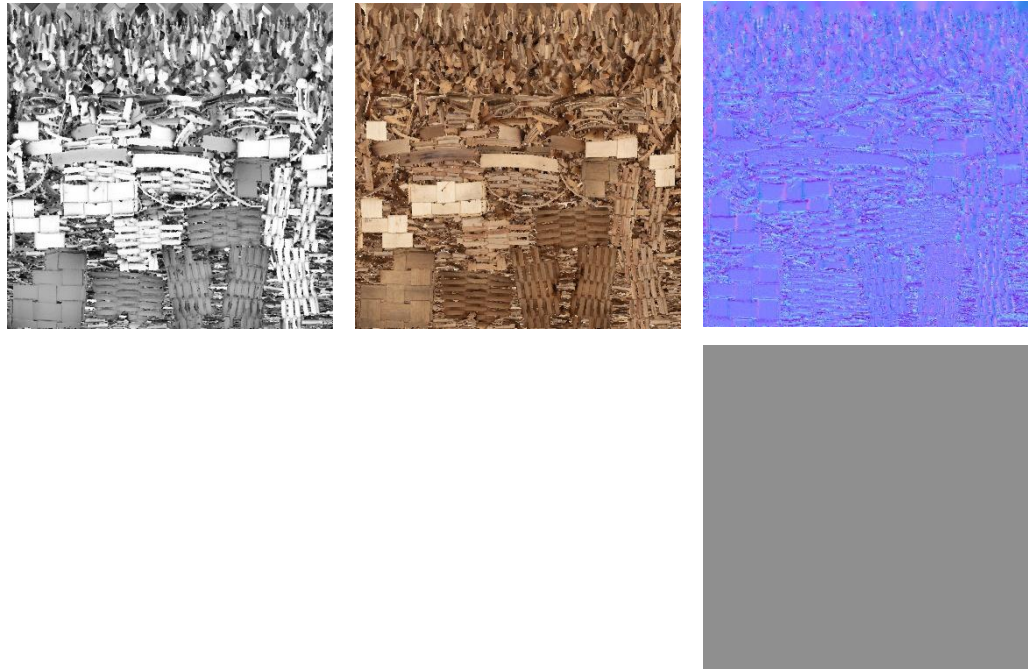


Fig. 6 – AO, Diffuse, Normal (top), and Roughness (bottom)



Blender Report.

Rendering



Fig. 7 – Rendered image of the final model



Fig. 8 – Final model rendered in context

Scaling



Fig.9 – Different views of the 3D model showing front, back, sides, bottom, and top perspectives



Data Sheet.

Data

Basket	
Site	Muséu del Pueblu d’Asturies /
Origin	-
Creator	Enrique Blanco Fernández
Technique	Basketry
Material	Oak and Hazel Wood
Date	2000
Purpose of Production	Transport of Materials
Size	16,8x17.4x17.8cm

Description

Basket made with interwoven wood, featuring a rectangular base and a handle.