

Jar



Photogrammetry Report.

Component

Image Data	
Orientation Report	
1. Number of input data	251
2. Registered images count	249 / 251
3. Points count	518083
4. Total projections	2422112
5. Average images per tie point	4.7
6. Maximum reprojection error [pixels]	2.00
7. Median reprojection error [pixels]	0.4
8. Mean reprojection error [pixels]	0.49



Fig. 1 – Composite 4 Views

Model Data	
Poly Report	
1. High Poly Triangle count	28877930
2. Low Poly Triangle count	74994



Fig. 2 – High Poly



Fig. 3 – Low Poly



## Texturing Report.

### Roughness and Metallic



Fig. 4 – Before texturing with SP



Fig. 5 – After texturing with SP

## Texture Correction

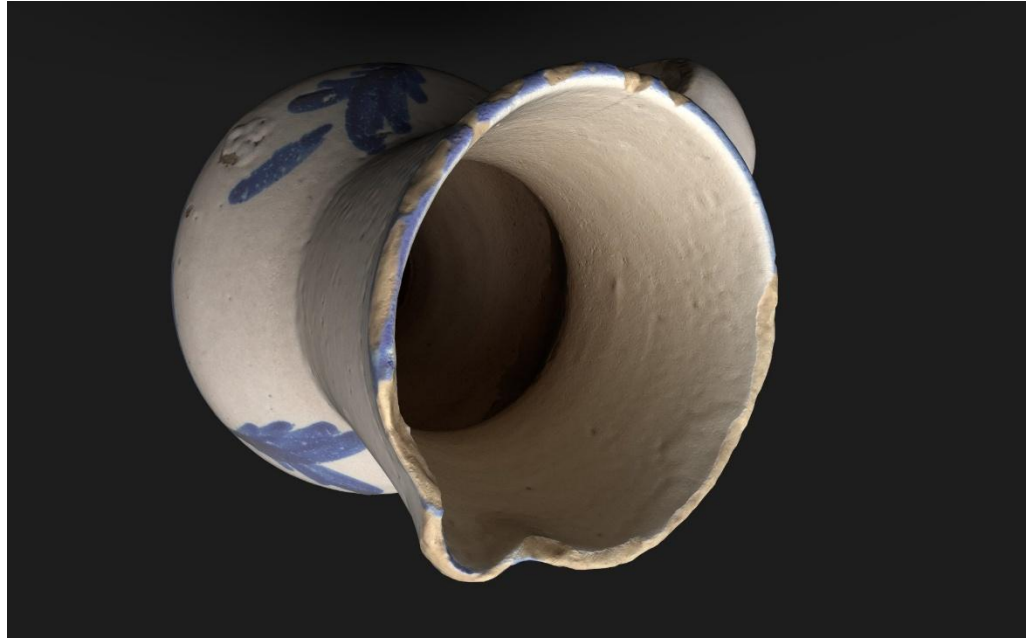


Fig. 6 – Before texturing with SP



Fig. 7 – After texturing with SP

## PBR Textures

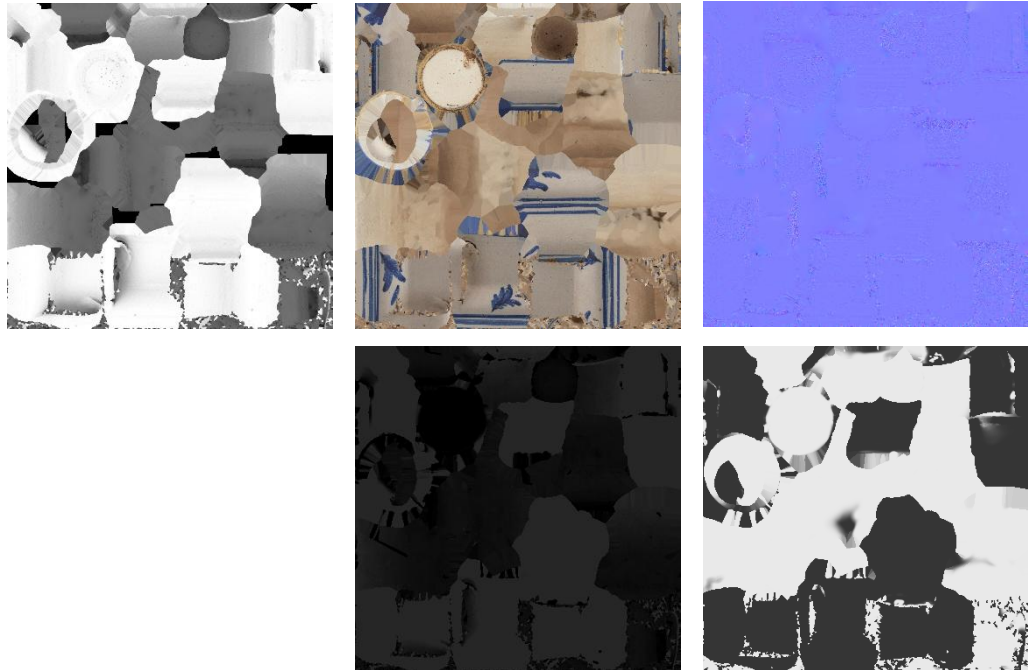


Fig. 8 – AO, Diffuse, Normal (top), Metalness and Roughness (bottom)



## Blender Report.

### Rendering



Fig. 11 – Rendered image of the final model



Fig. 12 – Final model rendered in context

## Scaling



Fig.13 – Different views of the 3D model showing, front, back, sides, bottom and top perspectives





Data Sheet.

Data

Jar	
Site	Muséu del Pueblu d´Asturies / FM015576
Origin	-
Creator	Alfar de el Rayu
Technique	-
Material	Glazed pottery
Date	Ca. 1900-1936
Purpose of Production	Household ware
Size	19x14,7x13,8cm

Description

Single-handled glazed pottery jar, representative of the success of this workshop in the early 20th century. Blue lines stand out against the white surface, with vegetal motifs and lines decorating both the body and the mouth of the jar