

Jar



Photogrammetry Report.

Component

Image Data		
Orientation Report		
1.	Number of input data	201
2.	Registered images count	174 / 201
3.	Points count	481064
4.	Total projections	1470849
5.	Average images per tie point	3.1
6.	Maximum reprojection error [pixels]	2.00
7.	Median reprojection error [pixels]	0.23
8.	Mean reprojection error [pixels]	0.35



Fig. 1 – Composite 4 Views

Model Data		
Poly Report		
1.	High Poly Triangle count	28998444
2.	Low Poly Triangle count	74986

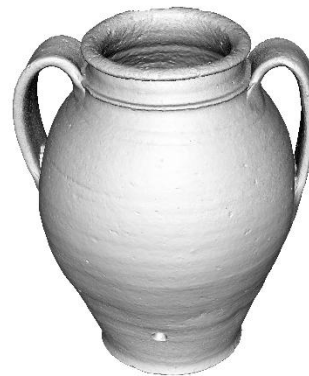


Fig. 2 – High Poly



Fig. 3 – Low Poly



Texturing Report.

Roughness and Texture Correction

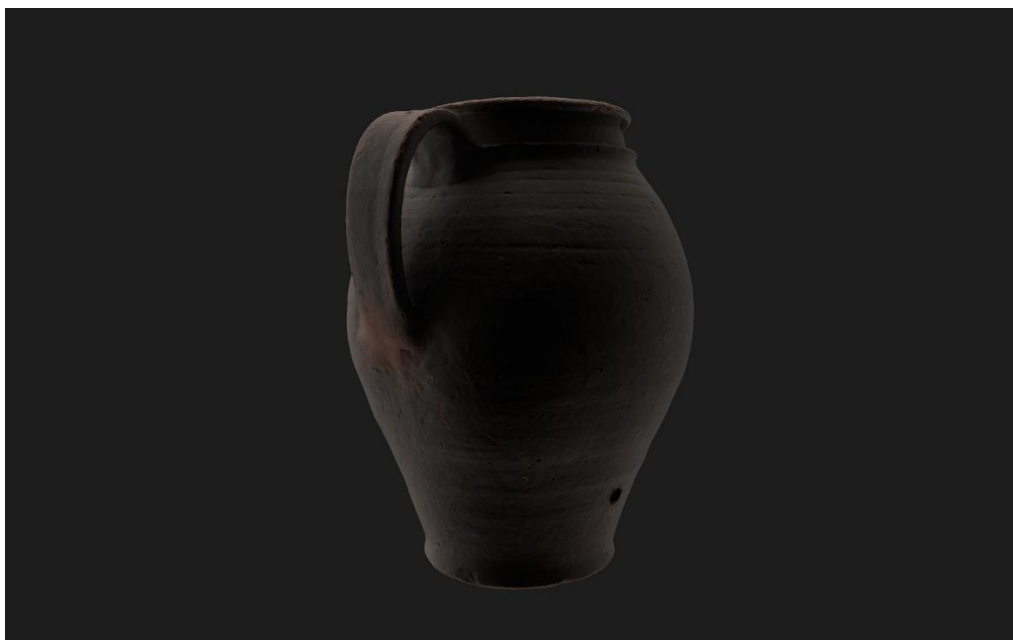


Fig. 4 – Before texturing with SP

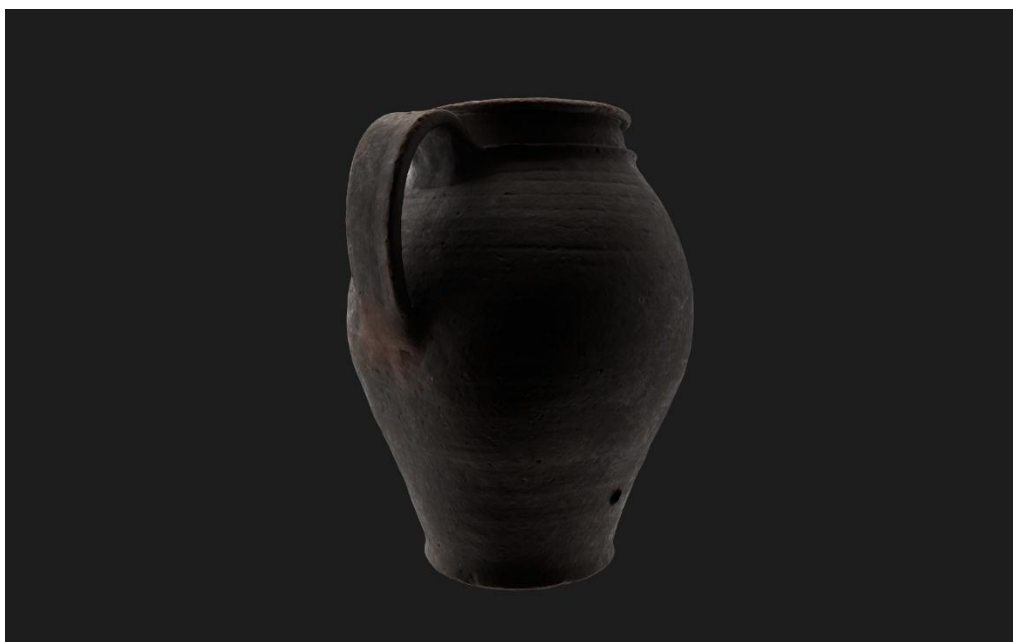


Fig. 5 – After texturing with SP

PBR Textures

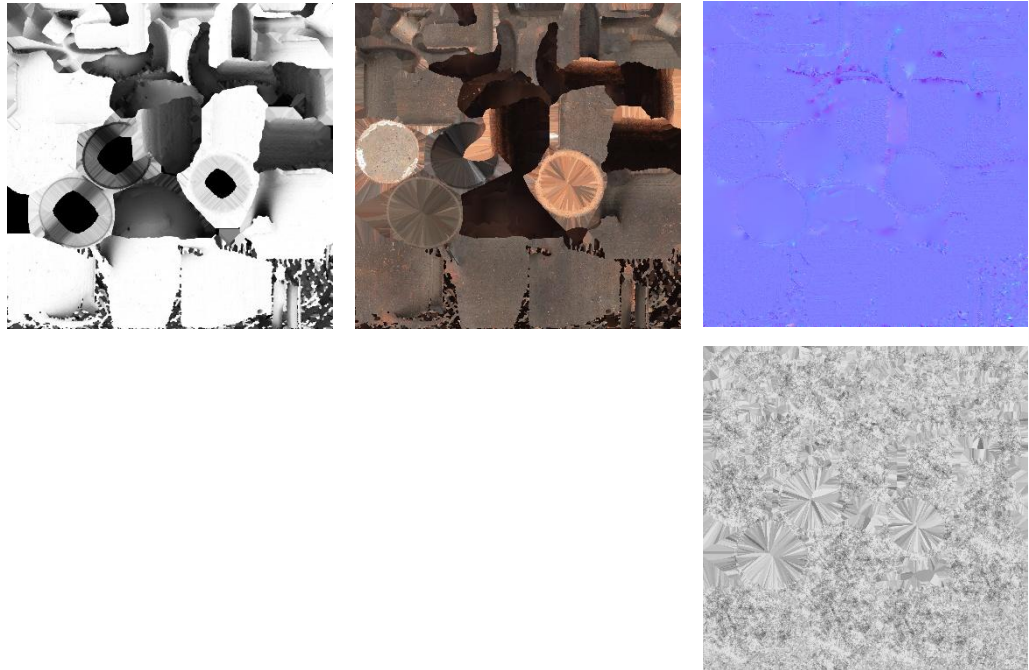


Fig. 6 – AO, Diffuse, Normal (top), and Roughness (bottom)



Blender Report.

Rendering



Fig. 7 – Rendered image of the final model



Fig. 8 – Final model rendered in context

Scaling



Fig.9 – Different views of the 3D model showing, front, back, sides, bottom and top perspectives



Data Sheet.

Data

Jar	
Site	Muséu del Pueblu d´Asturies / FM015584
Origin	-
Creator	Alfar de Faro
Technique	Reduction firing
Material	Clay
Date	19th-20th
Purpose of Production	Household ware
Size	24,6x20,7x18,7cm

Description

A traditional Asturian pottery jar, called a “botía,” used to contain and serve liquids. Two handles help in carrying the jar.