

# Cooking pot



## Photogrammetry Report.

### Component

#### Image Data

#### Orientation Report

1.	Number of input data	199
2.	Registered images count	198 / 199
3.	Points count	488394
4.	Total projections	1549786
5.	Average images per tie point	3.2
6.	Maximum reprojection error [pixels]	2.00
7.	Median reprojection error [pixels]	0.36
8.	Mean reprojection error [pixels]	0.48

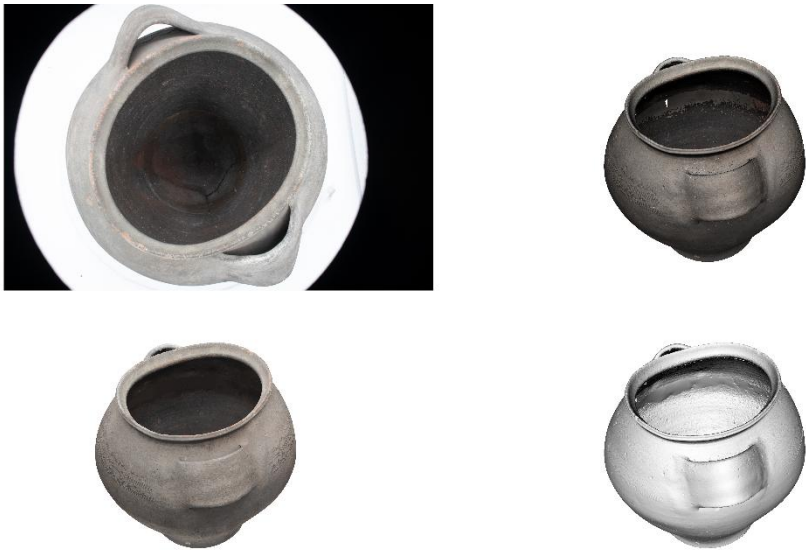


Fig. 1 – Composite 4 Views

Model Data		
Poly Report		
1.	High Poly Triangle count	46662080
2.	Low Poly Triangle count	75006



Fig. 2 – High Poly



Fig. 3 – Low Poly



## Texturing Report.

### Roughness



Fig. 4 – Before texturing with SP



Fig. 5 – After texturing with SP



## PBR Textures

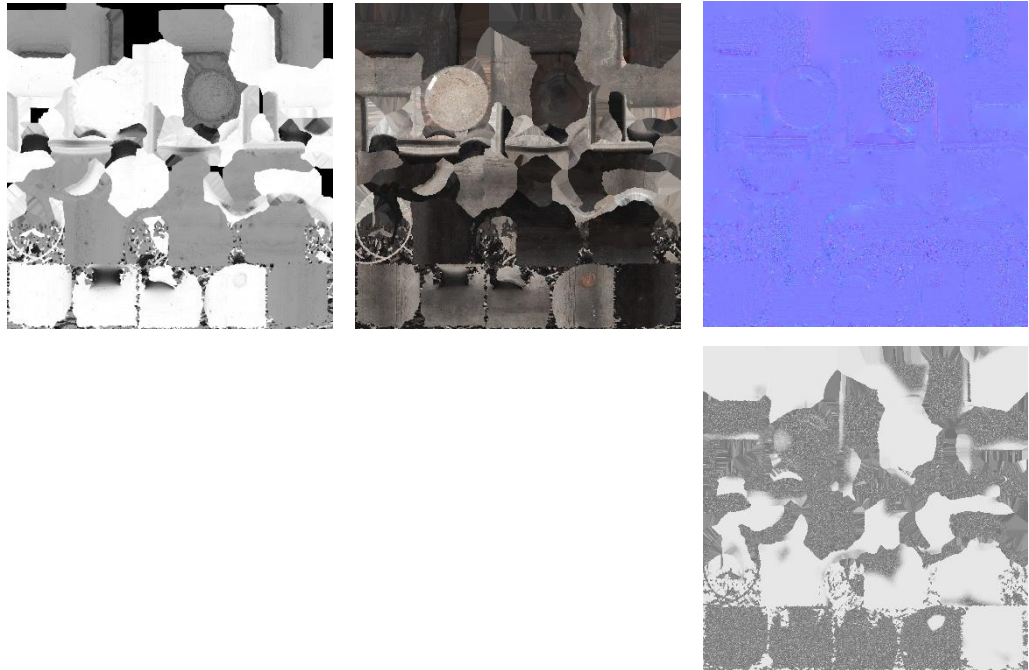


Fig. 6 – AO, Diffuse, Normal (top), and Roughness (bottom)



## Blender Report.

### Rendering



Fig. 7 – Rendered image of the final model



Fig. 8 – Final model rendered in context

## Scaling



Fig.9 – Different views of the 3D model showing, front, back, sides, bottom and top perspectives





Data Sheet.

Data

Pot	
Site	Muséu del Pueblu d´Asturies / FM015587
Origin	-
Creator	Alfar de Llamas del Mouro
Technique	Reduction Firing
Material	Clay
Date	Ca. 1900/30
Purpose of Production	Cooking
Size	29,9x33,8x31,7cm

Description

Cooking pot with a black color achieved through the reduction firing technique. The body has a balloon-like shape, with two handles for carrying. The surface features a few parallel lines and waves as its only decorative motifs.