

## Basket bag



### Photogrammetry Report.

#### Component

##### Image Data

##### Orientation Report

1.	Number of input data	215
2.	Registered images count	215 / 215
3.	Points count	506156
4.	Total projections	2110576
5.	Average images per tie point	4.2
6.	Maximum reprojection error [pixels]	2.00
7.	Median reprojection error [pixels]	0.42
8.	Mean reprojection error [pixels]	0.53



Fig. 1 – Composite 4 Views

Model Data		
Poly Report		
1.	High Poly Triangle count	29880040
2.	Low Poly Triangle count	74964



Fig. 2 – High Poly

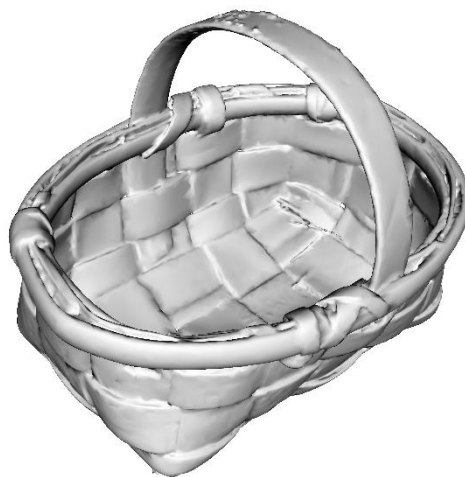


Fig. 3 – Low Poly



## Texturing Report.

### Roughness and Texture Correction



Fig. 4 – Before texturing with SP



Fig. 5 – After texturing with SP



## Normal Correction

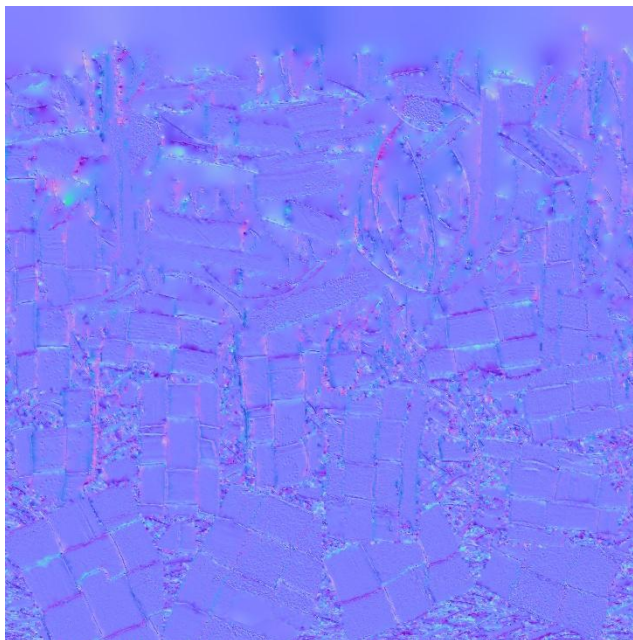


Fig. 6 – Before Correcting

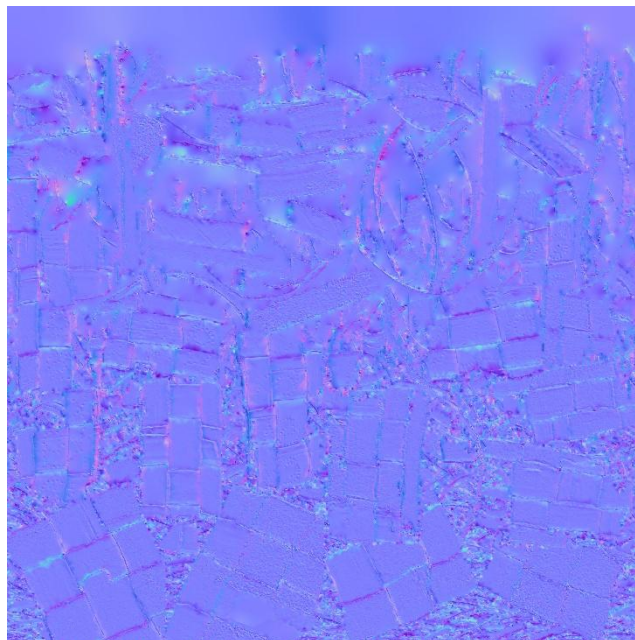


Fig. 7 – After Correcting

## PBR Textures

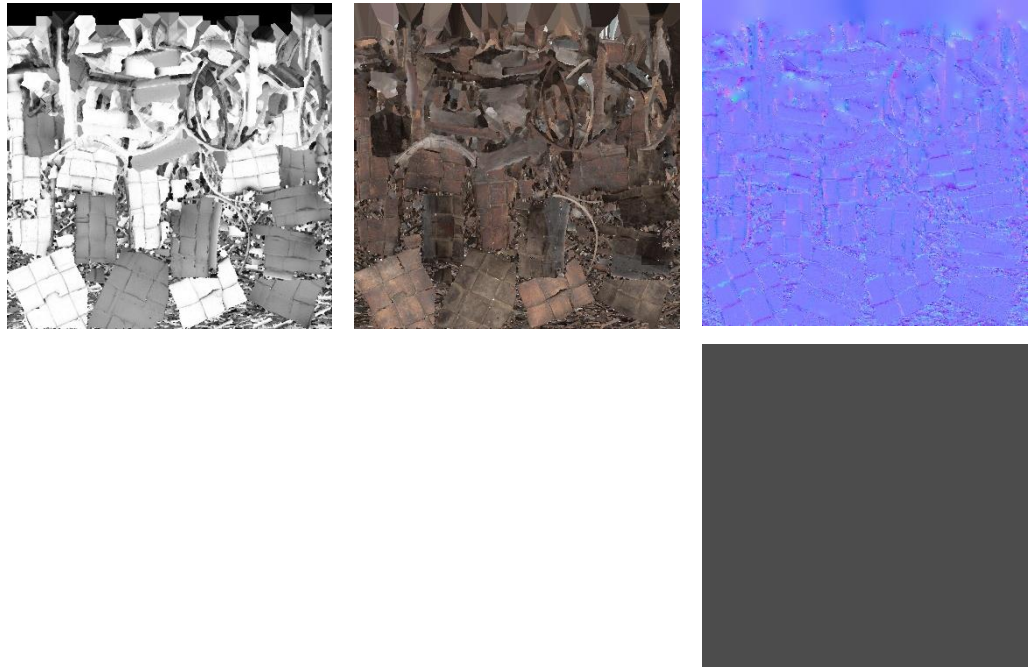


Fig. 8 – AO, Diffuse, Normal (top), and Roughness (bottom)



## Blender Report.

### Mesh Restoration

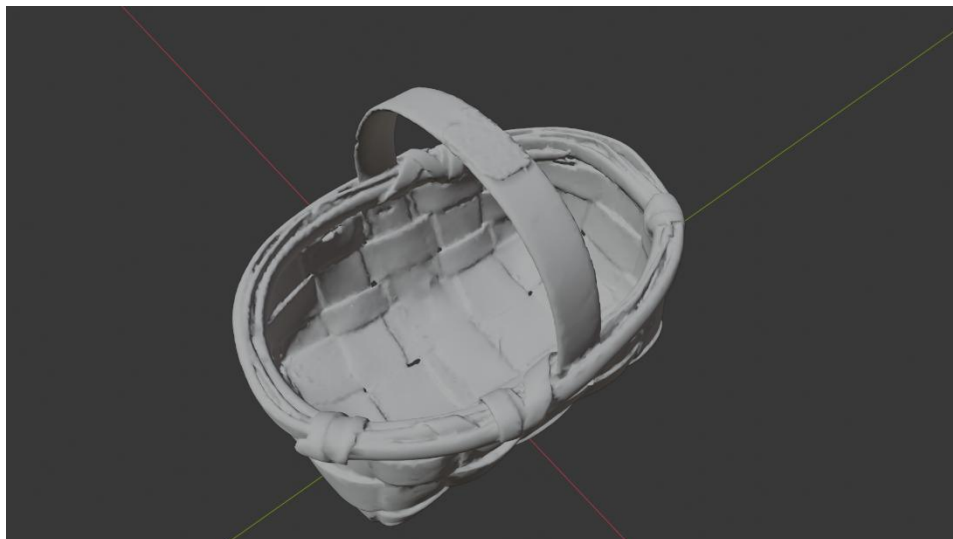


Fig. 9 – Mesh before restoration

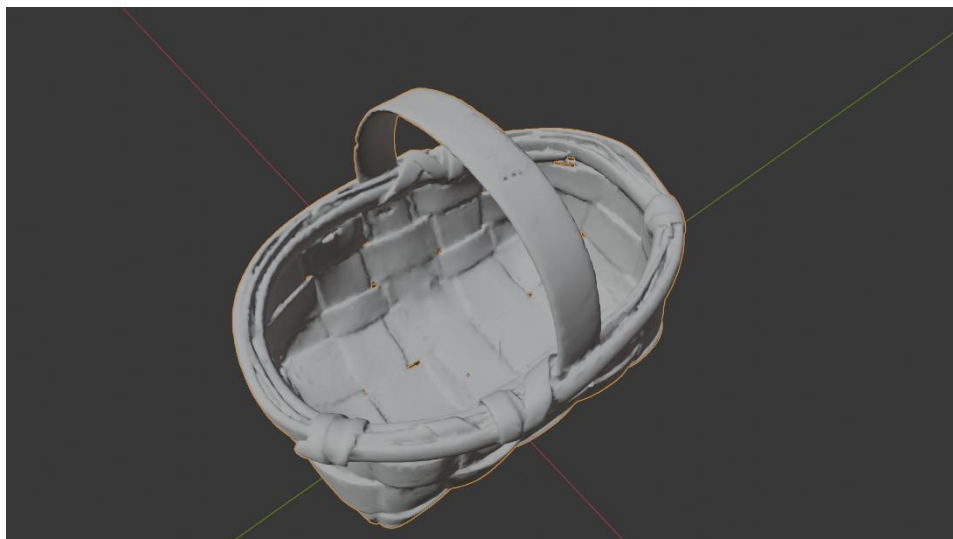


Fig. 10 – Mesh after restoration



## Rendering



Fig. 11 – Rendered image of the final model



Fig. 12 – Rendered image of the final model in context



## Scaling



Fig.9 – Different views of the 3D model showing front, back, sides, bottom, and top perspectives



Data Sheet.

Data

Basket bag	
Site	Muséu del Pueblu d´Asturies /
Origin	-
Creator	-
Technique	Basketry
Material	Wood
Date	19th-20th
Purpose of Production	Transport of materials
Size	16,1x23,5x16,9cm

Description

Basket bag made of interwoven wood, with an oval shape and a handle that facilitates transport