

Horn container



Photogrammetry Report.

Component

Image Data

Orientation Report

1.	Number of input data	196
2.	Registered images count	158 / 196
3.	Points count	355061
4.	Total projections	1344891
5.	Average images per tie point	3.8
6.	Maximum reprojection error [pixels]	2.00
7.	Median reprojection error [pixels]	0.42
8.	Mean reprojection error [pixels]	0.54



Fig. 1 – Composite 4 Views

Model Data	
Poly Report	
1. High Poly Triangle count	21496168
2. Low Poly Triangle count	74988

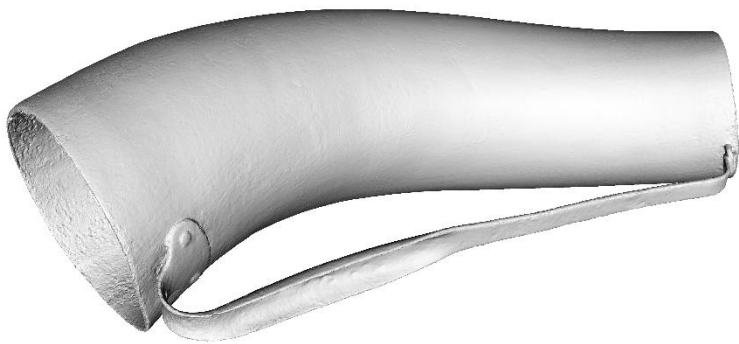


Fig. 2 – High Poly

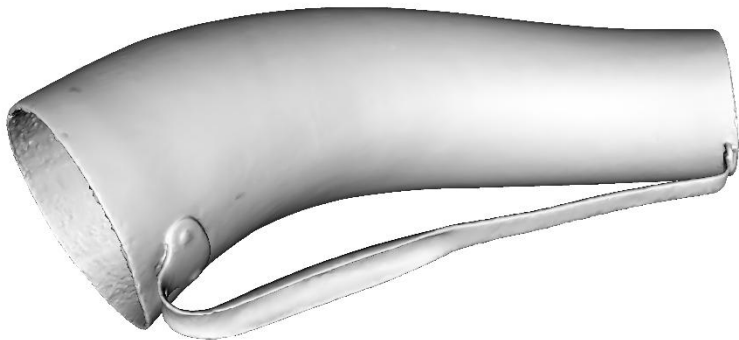


Fig. 3 – Low Poly



Texturing Report.

Roughness and Metalness



Fig. 4 – Before texturing with SP



Fig. 5 – After texturing with SP

PBR Textures

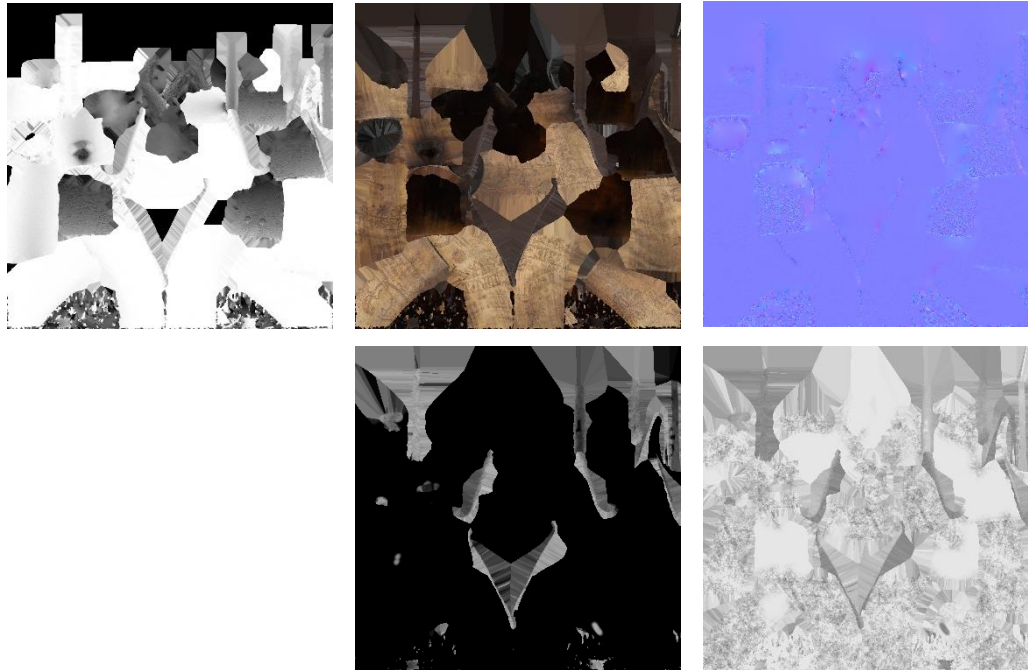


Fig. 6 – AO, Diffuse, Normal (top), and Roughness (bottom)



Blender Report.

Mesh Restoration

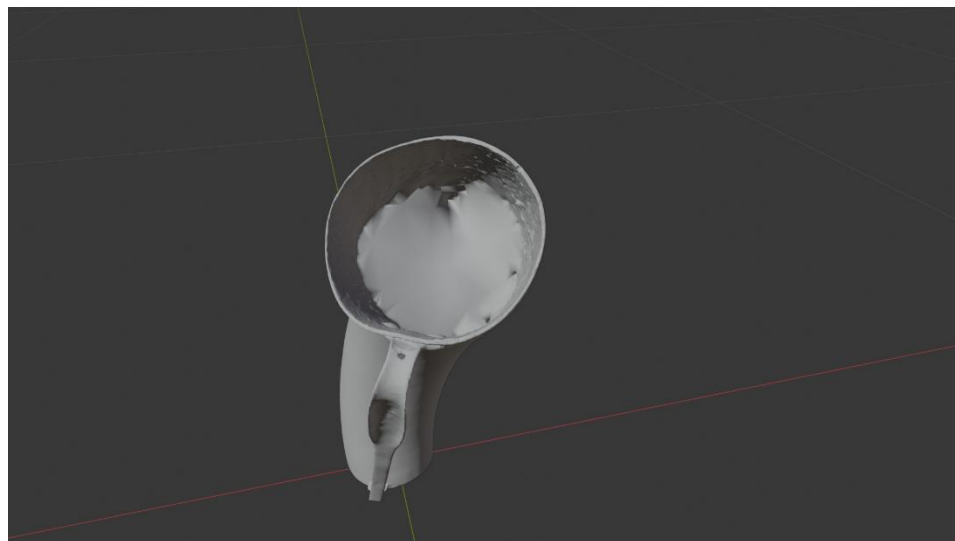


Fig. 7 – 3D Model before restoration



Fig. 8 – 3D Model after restoration

Rendering



Fig. 9 – Rendered image of the final model



Fig. 10– Final model rendered in context

Scaling



Fig.11 – Different views of the 3D model showing front, side, back, side, bottom, and top perspectives



Data Sheet.

Data

Horn container	
Site	Muséu del Pueblu d’Asturies / RDM1302
Origin	-
Creator	-
Technique	Carving; Forging
Material	Horn; Iron
Date	Ca. 1875/1900
Purpose of Production	Dairy Industry; Herding
Size	37x26x14

Description

A large horn container featuring a wide range of decorative motifs and notable inscriptions. Garlands, plants, and flowers are accompanied by animals and hybrid creatures. One inscription indicates ownership: “I belong to Juan Rodríguez” (“Soy de Juan Rodríguez”), while another reflects on the creation of the object: “I cannot do it better / because my sight is failing / and I also lack / both study and the help of grace” (“No puedo acerlo [sic] mejor / porque la vista me falta / también faltan falta [sic] los / estudios y la yuda [sic] de gracia”).