

Spice container



Photogrammetry Report.

Component

| Image Data | |
|--|-----------|
| Orientation Report | |
| 1. Number of input data | 301 |
| 2. Registered images count | 301 / 301 |
| 3. Points count | 869247 |
| 4. Total projections | 3579072 |
| 5. Average images per tie point | 4.1 |
| 6. Maximum reprojection error [pixels] | 2.00 |
| 7. Median reprojection error [pixels] | 0.4 |
| 8. Mean reprojection error [pixels] | 0.52 |



Fig. 1 – Composite 4 Views

| Model Data | |
|-----------------------------|----------|
| Poly Report | |
| 1. High Poly Triangle count | 27026124 |
| 2. Low Poly Triangle count | 74982 |

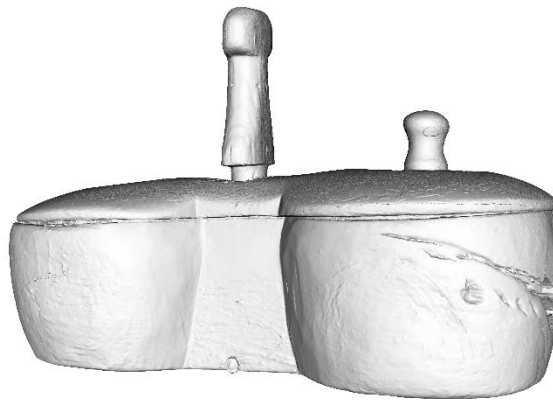


Fig. 2 – High Poly

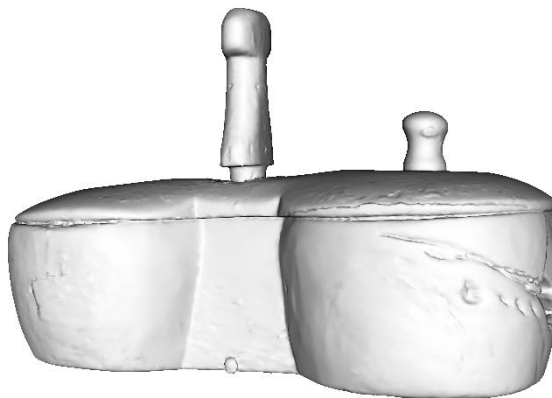


Fig. 3 – Low Poly



Texturing Report.

Roughness and Texture Correction



Fig. 4 – Before texturing with SP



Fig. 5 – After texturing with SP

PBR Textures

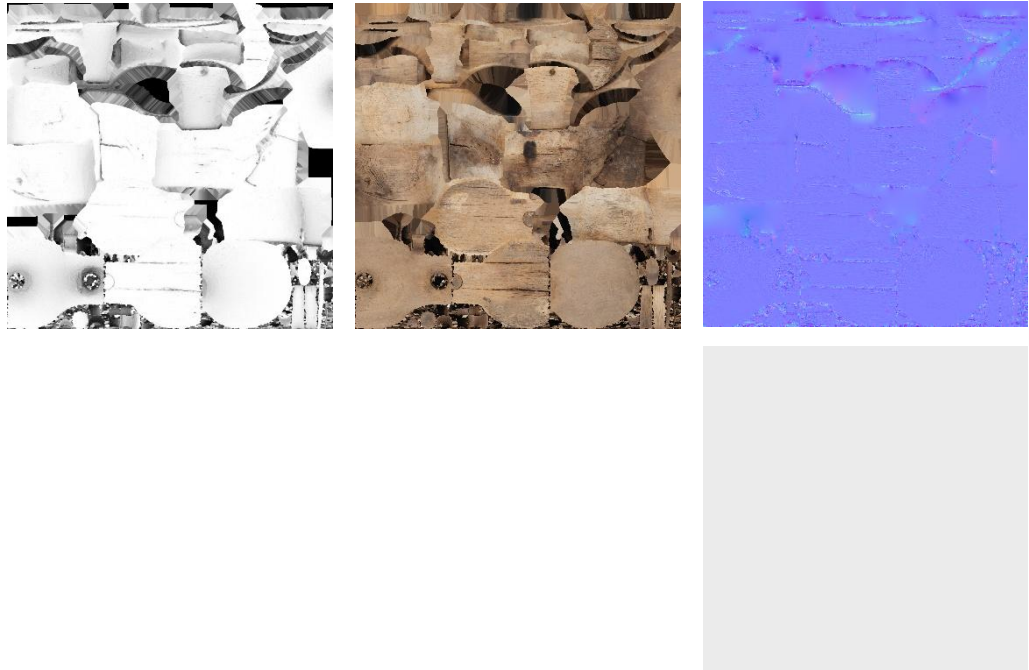


Fig. 6 – AO, Diffuse, Normal (top), and Roughness (bottom)



Blender Report.

Rendering



Fig. 7 – Rendered image of the final model



Fig. 8 – Final model rendered in context

Scaling



Fig.9 – Different views of the 3D model showing, front, back, sides, bottom and top perspectives



Data Sheet.

Data

| Spice container | |
|-----------------------|-------------------------------|
| Site | Muséu del Pueblu d´Asturies / |
| Origin | - |
| Creator | - |
| Technique | Wood carving. |
| Material | Beech wood |
| Date | Ca. 1890-1925 |
| Purpose of Production | Household ware |
| Size | 19,8x31,3x13,8cm |

Description

Spice container with a body shaped like a figure eight and a central axis that passes through the lid. The lid can rotate to open the container and features a handle at one end to aid in moving it.